



# Trees for Neighborhoods

## 2026 Tree Options



**Seattle  
Public Utilities**



**Seattle  
City Light**

# Introduction

The Trees for Neighborhoods planting program helps Seattle residents plant new trees in yards and along streets at their homes. We invite you to learn more about what tree species options are available through this year's program as you evaluate your planting site and select the best tree suited for your space.

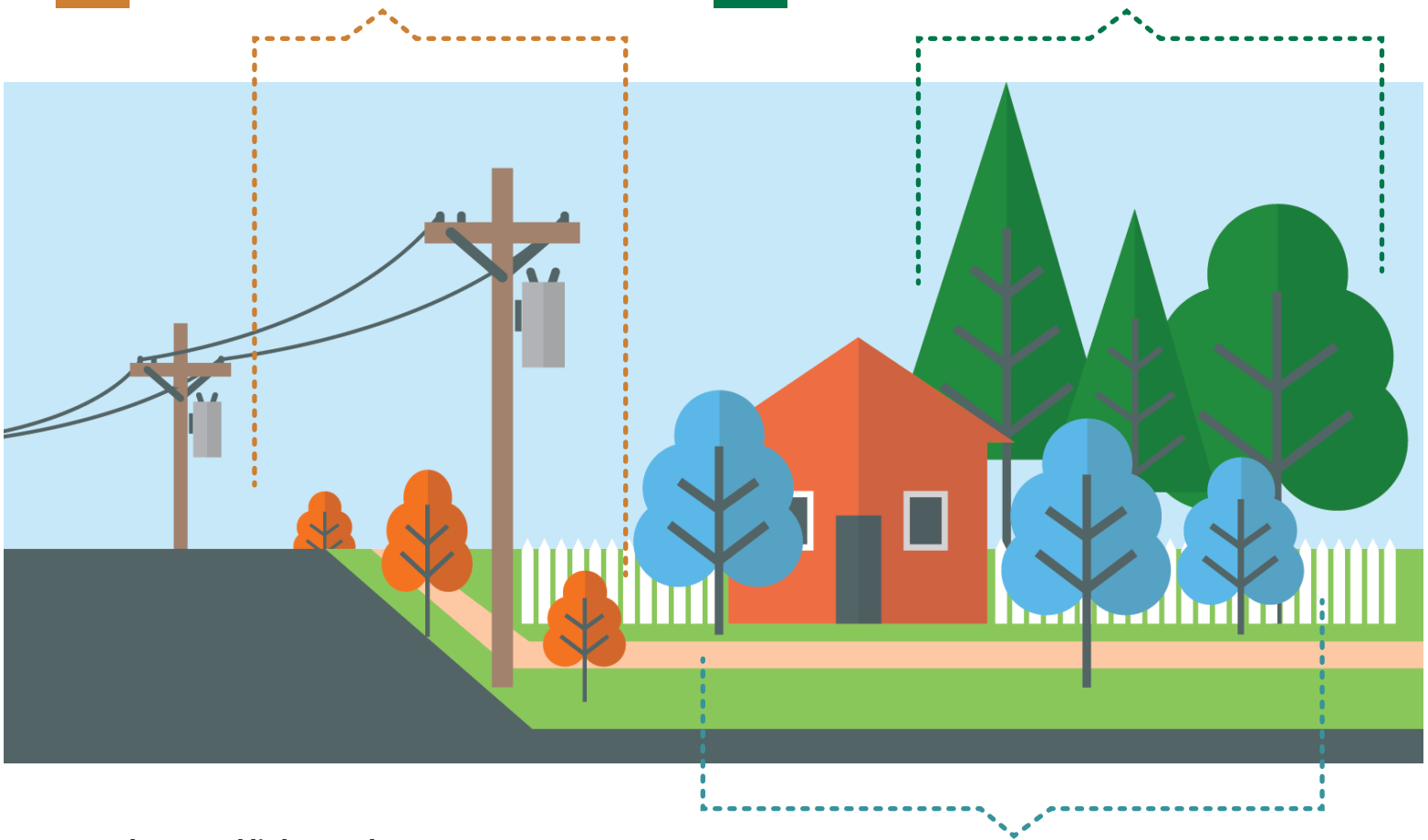
*What tree is right for me?*

## Trees under power lines

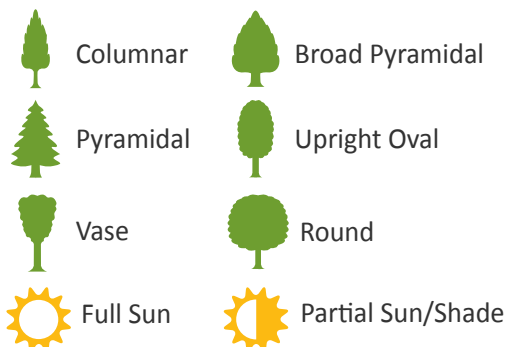
Take time to look above your planting strip and around your home to check if there are any overhead high-voltage power lines. If so you must choose a tree from the "Under Power Lines" tree category.

## Trees in your yard

A yard tree is one you will plant on your private property. Choose a tree with the largest mature size that will thrive in your space. **Be sure to call 811 to ensure your planting space is 5 feet away from underground utilities.**



## Tree shape and light needs



## Trees along the street

A street tree is one you will plant in the public right-of-way, which is typically in a planting strip between the road and a sidewalk, but can also be traffic circles, easements, or along alleyways. These trees are regulated by the Seattle Department of Transportation (SDOT) and need an approved planting permit. **Be sure to measure your planting strip to ensure it is wider than the minimum listed for the tree you want.**



# Cascara

*Rhamnus purshiana*

This small native tree boasts small flowers and purple fruit that feed many native birds. While it's frequently overlooked, it's a highly adaptable tree that will work well in a woodland setting or in a smaller yard. Its foliage turns brilliant yellow in autumn.



## Site selection

**Power Line Approved:** Yes

**Mature Height:** 25 feet

**Mature Spread:** 20 feet

**Min. street tree planting width:** 5 feet



## Where to plant

A perfect tree for unimproved rights of way or woodland settings. Can also be used for small yard spaces.

## Preferred site conditions

Works in a wide variety of conditions from wet to dry, part sun to shade. Cascara will grow best in a part sun/shade location with well-drained, uncompacted soils. Keep the grass away and make sure it is mulched.

## Minimum planting distances

- 15 feet from house or building
- 3 ½ feet back from the face of the curb
- 5 feet from underground utility lines
- 10 feet from power poles
- 7 ½ feet from driveways (10 feet recommended)
- 20 feet from streetlights and other existing trees
- 30 feet from street intersections

## Tree characteristics

### Tree shape

Upright oval.

### Leaves

Dark green oval shaped leaves turning yellow to orange red in the fall.

### Flowers

Small and insignificant greenish-white flowers favored by butterflies.

### Fruit

Small purple-black beads that attract many native birds.

### Potential problems

Very few pest and disease problems, however aphids can be a nuisance.

## More information

[WSU](#)

[Seattle PI](#)



# Moonglow magnolia®

*Magnolia virginiana* 'Jim Wilson'

This upright, evergreen magnolia has bright green leaves with silver undersides that catch your attention. It produces creamy-white blooms in the summer that carry a lemony fragrance.



## Site selection

Power Line Approved: Yes

Mature Height: 30 feet

Mature Spread: 20 feet

Min. street tree planting width: 5 feet

## Where to plant

Perfect for under power lines or in small yard spaces. Not appropriate for larger yard spaces or planting strips without overhead power lines.

## Preferred site conditions

Full sun to light or open shade. Prefers moist but well drained soil.

## Minimum planting distances

- 15 feet from house or building
- 3 ½ feet back from the face of the curb
- 5 feet from underground utility lines
- 10 feet from power poles
- 7 ½ feet from driveways (10 feet recommended)
- 20 feet from streetlights and other existing trees
- 30 feet from street intersections

## Tree characteristics

### Tree shape

Upright oval.

### Leaves

Evergreen. Glossy green on top and silver underneath.

### Flowers

Creamy white with a light lemony fragrance.

### Fruit

Cone-like fruits with bright red seeds mature in the fall and are a food source for birds. Can be showy.

### Potential problems

No serious insect or disease problems.

## More information

[Great Plant Picks](#)

[Missouri Botanical Garden](#)



# Vanessa Persian Parrotia

*Parrotia persica* 'Vanessa'

An upright form of the species that is quite durable. From its exfoliating gray and tan bark to its remarkable kaleidoscope of leaf color, this tree provides beauty all year long.



## Site selection

Power Line Approved: Yes

Mature Height: 30 feet

Mature Spread: 15 feet

Min. street tree planting width: 5 feet



## Where to plant

Works well in smaller planting strips or a tight yard space.

## Preferred site conditions

Full sun to light shade in medium moisture, well-drained soil. Adaptable to a variety of moisture and soil conditions.

## Minimum planting distances

- 15 feet from house or building
- 3 ½ feet back from the face of the curb
- 5 feet from underground utility lines
- 10 feet from power poles
- 7 ½ feet from driveways (10 feet recommended)
- 20 feet from streetlights and other existing trees
- 30 feet from street intersections

## Tree characteristics

### Tree shape

Upright vase.

### Leaves

Emerge tinged in purple, they turn lustrous green in summer before turning to variable shades of yellow, orange, and red in fall.

### Flowers

Small, with brown bracts and showy red stamens.

### Potential problems

No serious insect or disease problems.

## More information

[Great Plant Picks](#)

[Society of Municipal Arborists](#)

[J Frank Schmidt and Son](#)



# Summer Flare<sup>®</sup> Japanese tree lilac

*Syringa reticulata* 'SumDak'

A beautiful, street or yard tree that works well under powerlines. This tree has lovely, creamy white flowers that bloom in late spring. This tree also has attractive peeling, reddish-brown bark for winter interest!



## Site selection

Power Line Approved: Yes

Mature Height: 30 feet

Mature Spread: 15 feet

Min. street tree planting width: 5 feet



## Where to plant

A perfect tree for smaller planting strips or under powerlines. This is also a great fit for small yard spaces.

## Preferred site conditions

Prefers well-drained soil in full sun to light shade, it flowers best in full sun. Tolerant of tough urban conditions. Will tolerate dry soils once established, intolerant of wet and flooded soils.

## Minimum planting distances

- 15 feet from house or building
- 3 ½ feet back from the face of the curb
- 5 feet from underground utility lines
- 10 feet from power poles
- 7 ½ feet from driveways (10 feet recommended)
- 20 feet from streetlights and other existing trees
- 30 feet from street intersections

## Tree characteristics

### Tree shape

Oval to upright spreading.

### Leaves

Green heart shaped leaves in pairs.

### Flowers

Fragrant white clusters in June. Attracts pollinators.

### Potential problems

No serious insect or disease problems.

## More information

[Missouri Botanical Garden](#)

[NDSU Research Foundation](#)



# Red oak

*Quercus rubra*

A majestic shade tree with a rounded habit. A fast-growing tree that is tolerant of urban conditions, it has glossy dark green leaves that turn russet-red in fall. The acorns are a great food source for wildlife.



## Site selection

Power Line Approved: No

Mature Height: 60 feet

Mature Spread: 40 feet

Min. street tree planting width: 8 feet



## Where to plant

Great specimen shade tree for your yard or in a wide planting strip without overhead power lines.

## Preferred site conditions

Full sun. Prefers moist but well drained soil.

## Minimum planting distances

- 15 feet from house or building
- 3 ½ feet back from the face of the curb
- 5 feet from underground utility lines
- 10 feet from power poles
- 7 ½ feet from driveways (10 feet recommended)
- 20 feet from streetlights and other existing trees
- 30 feet from street intersections

## Tree characteristics

### Tree shape

Rounded.

### Leaves

Glossy green with toothed lobes. Russet-red fall color.

### Fruit

An acorn with a thin flat cap. Enjoyed by wildlife.

### Potential problems

No serious insect or disease problems.

## More information

[Missouri Botanical Garden](#)

[Arbor Day Foundation](#)



# White Shield Osage Orange

*Maclura pomifera* 'White Shield'

This fruitless, thornless cultivar makes a beautiful yard or street tree. It's very tolerant of hot, dry conditions while providing excellent shade. It has glossy, green heart-shaped leaves that turn a vibrant yellow in the fall.



## Site selection

Power Line Approved: No

Mature Height: 35 feet

Mature Spread: 35 feet

Min. street tree planting width: 8 feet



## Where to plant

Great shade tree for your yard or a planting strip without overhead power lines.

## Preferred site conditions

Full sun. Adaptable to a wide range of soils, drought and heat tolerant when established.

## Minimum planting distances

- 15 feet from house or building
- 3 ½ feet back from the face of the curb
- 5 feet from underground utility lines
- 10 feet from power poles
- 7 ½ feet from driveways (10 feet recommended)
- 20 feet from streetlights and other existing trees
- 30 feet from street intersections

## Tree characteristics

### Tree shape

Rounded and upright in youth, vase at maturity.

### Leaves

Glossy, green heart-shaped leaves that turn a bright yellow color in fall. This variety is thornless.

### Potential problems

No major disease or pest concerns.

## More information

[J Frank Schmidt and Son](#)



# Autumn Gold Ginkgo

*Ginkgo biloba* 'Autumn Gold'

This is a broadly pyramidal male selection of ginkgo that doesn't produce stinky fruit. The uniquely fan-shaped leaves are medium green turning to a beautiful gold in the fall. Tolerant of tough urban conditions, this is a great choice for your planting strip or yard.



## Site selection

**Power Line Approved:** No

**Mature Height:** 50 feet

**Mature Spread:** 30 feet

**Min. street tree planting width:** 8 feet



## Where to plant

Great shade tree for your yard or a planting strip without overhead wires.

## Preferred site conditions

Full sun. Adaptable to a wide range of soils.  
A durable tree for urban environments.

## Minimum planting distances

- 15 feet from house or building
- 3 ½ feet back from the face of the curb
- 5 feet from underground utility lines
- 10 feet from power poles
- 7 ½ feet from driveways (10 feet recommended)
- 20 feet from streetlights and other existing trees
- 30 feet from street intersections

## Tree characteristics

### Tree shape

Broadly pyramidal.

### Leaves

Iconic fan shaped leaves with a scalloped margin are a medium green in summer and a beautiful gold in fall. The leaves look similar to the leaflets on maidenhair fern thus, the other common name for ginkgo is maidenhair tree.

### Fruit

This is a male clone, so it does not produce the malodorous fruit female trees are known for.

### Potential problems

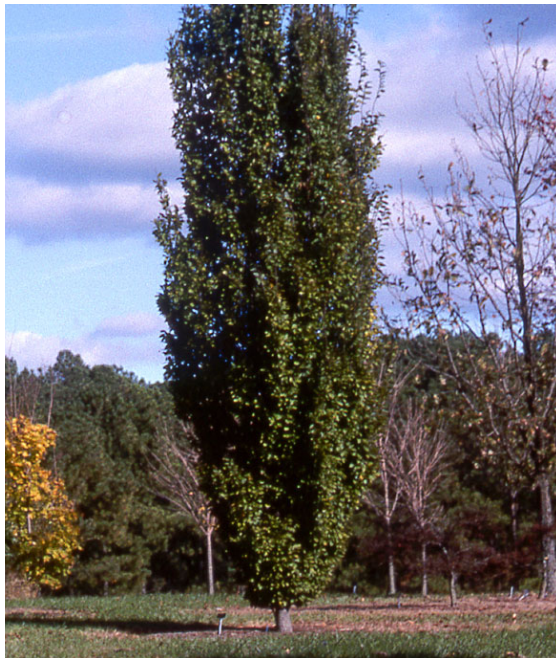
No serious insect or disease problems.

## More information

[Great Plant Picks](#)

[Missouri Botanical Garden](#)

[Gardenia](#)



# Frans Fontaine hornbeam

*Carpinus betulus* 'Frans Fontaine'

This tall, columnar tree is one of the narrowest hornbeam cultivars. It is tolerant of tough urban conditions, pollution, and is drought tolerant once established, making it an excellent street tree. The leaves are a glossy, green color that turns a vibrant golden yellow in the fall. Planting several of these together can create screening for privacy.



## Site selection

**Power Line Approved:** No

**Mature Height:** 35 feet

**Mature Spread:** 15 feet

**Min. street tree planting width:** 8 feet



## Where to plant

Great in yards or in a wide planting strip with no overhead wires. It will cast a dense yet not overbearing shade.

Could be used in groups for screening.

## Preferred site conditions

Full sun. Prefers moist, well-drained soil but is adaptable to a wide range of growing conditions and tolerant of tough growing conditions. Drought tolerant once established.

## Minimum planting distances

- 15 feet from house or building
- 3 ½ feet back from the face of the curb
- 5 feet from underground utility lines
- 10 feet from power poles
- 7 ½ feet from driveways (10 feet recommended)
- 20 feet from streetlights and other existing trees
- 30 feet from street intersections

## Tree characteristics

### Tree shape

Columnar.

### Leaves

Dark green leaves throughout the spring and summer months, turns a golden yellow in fall.

### Potential problems

No major insect or disease problems.

## More information

[J Frank Schmidt and Son](#)



# Hackberry

*Celtis occidentalis*

A tough tree for urban environments. Mature bark has corky ridges and a warty texture. The sweet fruit is attractive to wildlife, especially birds.



## Site selection

**Power Line Approved:** No

**Mature Height:** 50 feet

**Mature Spread:** 30 feet

**Min. street tree planting width:** 8 feet



## Where to plant

A great shade tree specimen for your yard or in a wide planting strip with no overhead wires.

## Preferred site conditions

Full sun. Moist but well drained soil. Heat tolerant.

## Minimum planting distances

- 15 feet from house or building
- 3 ½ feet back from the face of the curb
- 5 feet from underground utility lines
- 10 feet from power poles
- 7 ½ feet from driveways (10 feet recommended)
- 20 feet from streetlights and other existing trees
- 30 feet from street intersections

## Tree characteristics

### Tree shape

Rounded with age.

### Leaves

Dark green even into late summer. Yellow fall color.

### Flowers

Small greenish yellow male and female flowers come out just as leaves are emerging.

### Fruit

Small round green fruit that turn deep purple in late summer. Attractive to birds.

### Potential problems

No major insect or disease problems in the PNW.

## More information

[University of Minnesota](#)

[J Frank Schmidt and Son](#)



# Serbian Spruce

*Picea omorika*

One of the best performing spruces, this narrow and graceful conifer has arching branches and flattened bright green needles with silvery-blue undersides. You'll want to find a space in your garden for this spire-like wonder!



## Site selection

Power Line Approved: No

Mature Height: 50 feet

Mature Spread: 15 feet

Min. street tree planting width: 12 feet



## Where to plant

Perfect yard tree, even in smaller yard spaces because of its narrow growth habit.

## Preferred site conditions

Full sun. Prefers moist well drained soils.

## Minimum planting distances

- 15 feet from house or building
- 3 ½ feet back from the face of the curb
- 5 feet from underground utility lines
- 10 feet from power poles
- 7 ½ feet from driveways (10 feet recommended)
- 20 feet from streetlights and other existing trees
- 30 feet from street intersections

## Tree characteristics

### Tree shape

Pyramidal.

### Leaves

Flattened bright green needles with silvery-blue undersides.

### Fruit

Pendant cones are 2-3 inches long. Young cones are purple and turn brown with age.

### Potential problems

Mostly resistant to spruce aphid.

## More information

[Great Plant Picks](#)

[Missouri Botanical Garden](#)



# Golden Japanese cedar

*Cryptomeria japonica* 'Sekkan-sugi'

This cultivar is best known for its creamy yellow tipped foliage that adds a bright splash of color to a landscape. New growth has the most vibrant yellow color and becomes a darker green over the summer months. This tree grows quickly for the first few years after planting then slows down as it becomes denser over time.



## Site selection

Power Line Approved: No  
Mature Height: 30 feet  
Mature Spread: 18 feet  
Min. street tree planting width: 12 feet



## Where to plant

Excellent yard tree. Plant several to create a privacy screen.

## Preferred site conditions

Full sun to part shade. Prefers well-drained soil but tolerant of clay soils.

## Minimum planting distances

- 15 feet from house or building
- 3 ½ feet back from the face of the curb
- 5 feet from underground utility lines
- 10 feet from power poles
- 7 ½ feet from driveways (10 feet recommended)
- 20 feet from streetlights and other existing trees
- 30 feet from street intersections

## Tree characteristics

### Tree shape

Pyramidal.

### Leaves

Semi-pendulous branches with soft awl-shaped leaves.

### Potential problems

No major disease or pest concerns.

## More information

[Great Plant Picks](#)



# Bosnian Pine

*Pinus heldreichii* var. *leucodermis*

In youth this pine is slower growing with a dense, upright habit. With age it takes on a more open and layered habit yet keeps that pyramidal form. Some attractive details of this tree include upright bundles of dark green needles, bluish-purple young cones, and grayish-white young stems.



## Site selection

Power Line Approved: No

Mature Height: 60 feet

Mature Spread: 20 feet

Min. street tree planting width: 12 feet



## Where to plant

In your yard. Plant a grouping for screening.

## Preferred site conditions

Full sun. Adaptable to many soil conditions with good drainage. Drought tolerant once established.

## Minimum planting distances

- 15 feet from house or building
- 3 ½ feet back from the face of the curb
- 5 feet from underground utility lines
- 10 feet from power poles
- 7 ½ feet from driveways (10 feet recommended)
- 20 feet from streetlights and other existing trees
- 30 feet from street intersections

## Tree characteristics

### Tree shape

Pyramidal.

### Leaves

Dark green needles in bundles of two. Appear stiff and tufted at the ends of branches.

### Fruit

Cones are bluish purple when young and change to brown at maturity.

### Potential problems

No major disease or pest concerns.

## More information

[Great Plant Picks](#)

[Oregon State University](#)



# Deodar Cedar

*Cedrus deodara*

This gorgeous evergreen has a pyramidal shape in youth that eventually becomes a broad pyramidal shape with a flat top. Give it room to grow! The cones are barrel shaped and sit upright on the stems. The clusters of green tufted needles and graceful pendulous branches make this tree a distinctive site in the landscape.



## Site selection

Power Line Approved: No

Mature Height: 60 feet

Mature Spread: 40 feet

Min. street tree planting width: 12 feet



## Where to plant

Great yard tree. Give it room to grow!

## Preferred site conditions

Plant in full sun. Prefers moist but well drained soils. Drought tolerant once established.

## Minimum planting distances

- 15 feet from house or building
- 3 ½ feet back from the face of the curb
- 5 feet from underground utility lines
- 10 feet from power poles
- 7 ½ feet from driveways (10 feet recommended)
- 20 feet from streetlights and other existing trees
- 30 feet from street intersections

## Tree characteristics

### Tree shape

Pyramidal when young to flat topped with age.

### Leaves

Green, 1½ inch needles in tufted clusters.

### Fruit

Barrel shaped cones sit upright on stems. They break up while still attached to tree.

### Potential problems

No major disease or pest concerns.

## More information

[Arbor Day Foundation](#)

[Oregon State University](#)



# Grand fir

*Abies grandis*

Native to Seattle, the grand fir is truly grand. The glossy green foliage has a citrusy scent when crushed. This native conifer's narrow habit and rounded top makes it a beautiful yard tree when given room to grow. It also makes a great home for wildlife.



## Site selection

**Power Line Approved:** No

**Mature Height:** 80+ feet

**Mature Spread:** 20 feet

**Min. street tree planting width:** 12 feet



## Where to plant

Great yard tree. Give it room to grow!

## Preferred site conditions

Full sun to light shade. Prefers moist but well drained soil. Adapts well to a variety of soil conditions.

## Minimum planting distances

- 15 feet from house or building
- 3 ½ feet back from the face of the curb
- 5 feet from underground utility lines
- 10 feet from power poles
- 7 ½ feet from driveways (10 feet recommended)
- 20 feet from streetlights and other existing trees
- 30 feet from street intersections

## Tree characteristics

### Tree shape

Pyramidal.

### Leaves

Two-ranked, flat needles are glossy green above with white bands below. They have a great "citrus" smell when crushed.

### Fruit

3-4" upright cones near the tops of the tree.

### Potential problems

No major disease or pest concerns.

## More information

[Great Plant Picks](#)

[A Tree A Day](#)

[WSU Extension](#)