



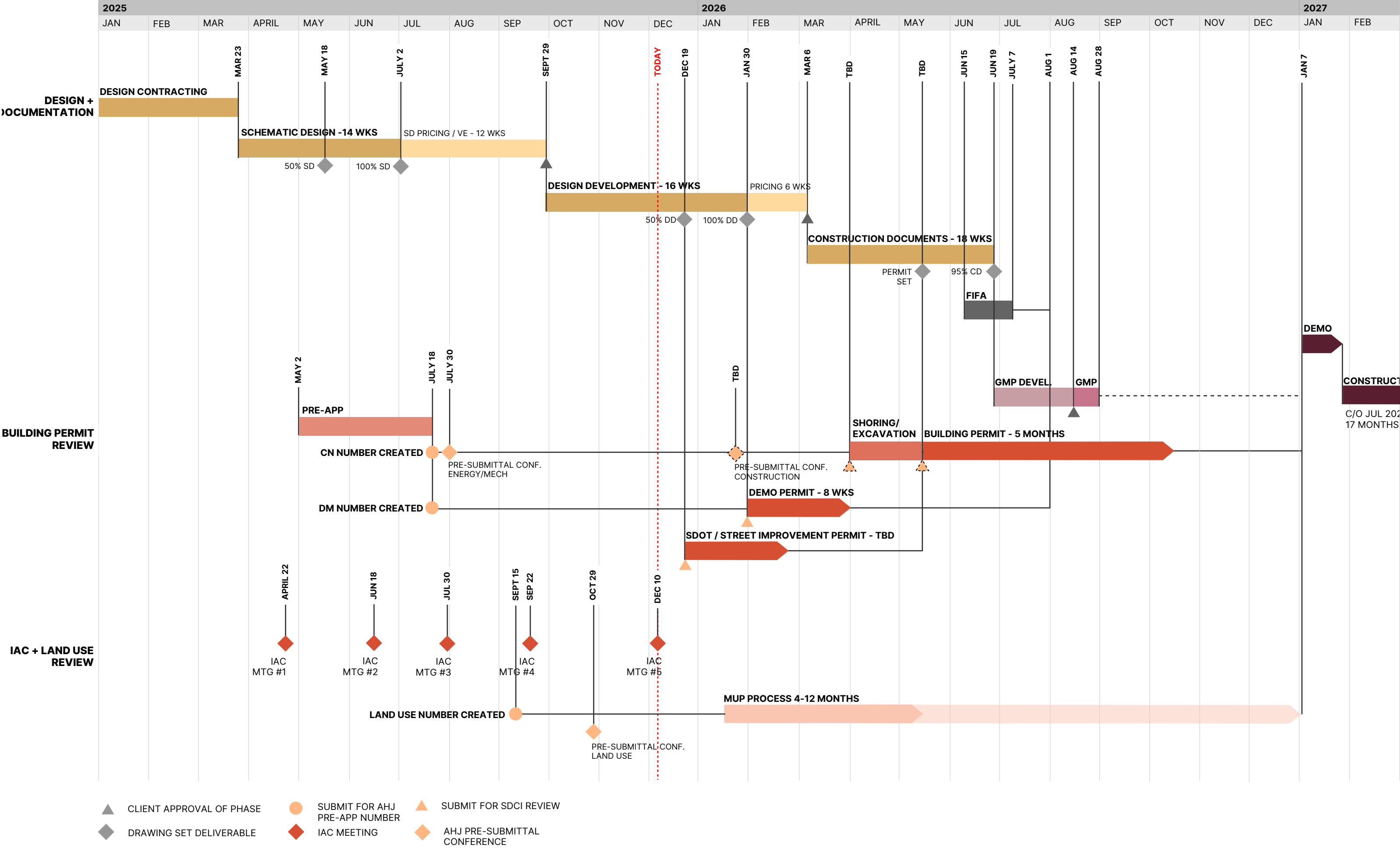
**SEATTLE UNIVERSITY
MUSEUM OF ART**
IAC 5

AGENDA

- Project Schedule
- Project Design Development - IAC 3 to IAC 5
- Museum Entries
- Campus Engagement and Parking Lot Views
- Facade Design Development
- Site Context Comparison
- Plaza Design Development - PLACE
- Exterior/Interior Material Palette

Seattle University Museum of Art - Preliminary Estimated Project Schedule

UPDATED: 2025.12.01



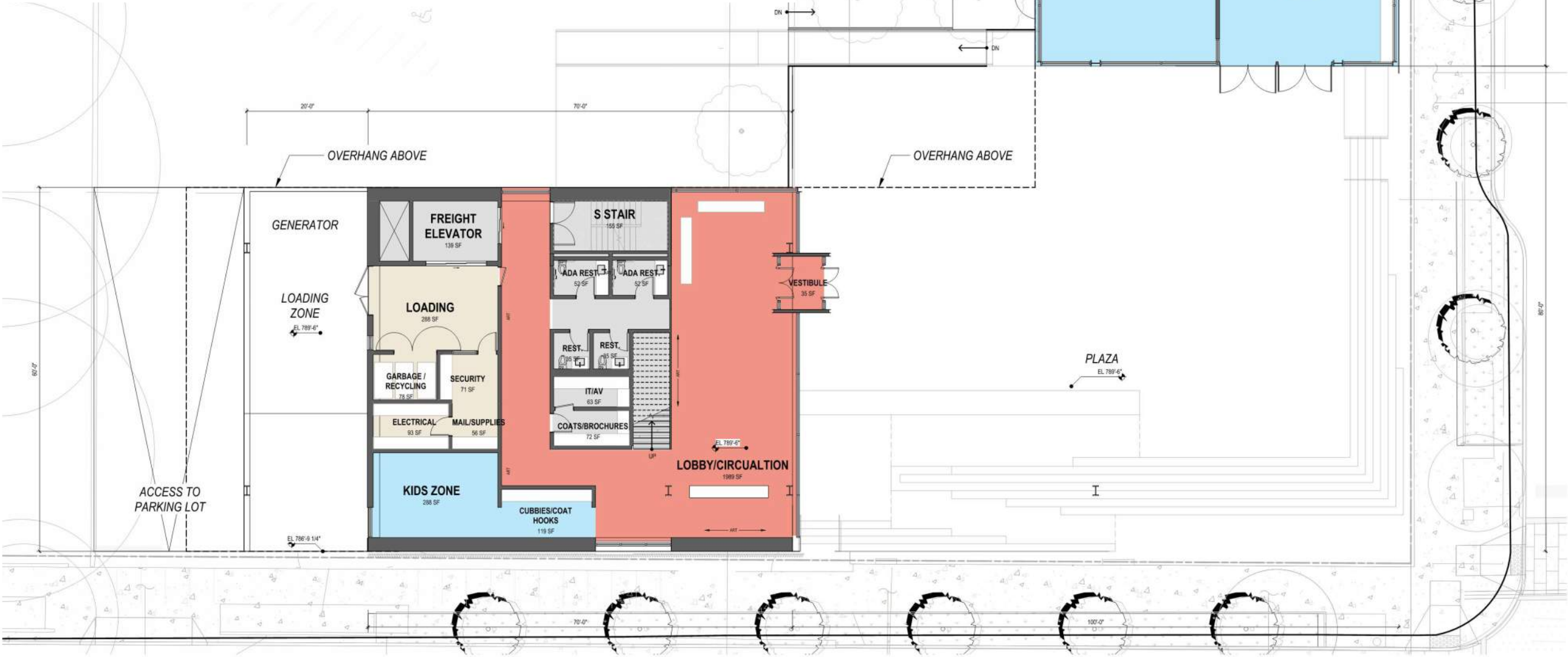
Plans from IAC 3

June 2025

- **Museum lobby placed in the South Podium, with café and art studio in the North Podium along 12th Avenue**
This arrangement separated key cultural and public-facing functions across the site, creating a split identity and limiting the ability of these spaces to support each other or activate adjacent areas.
- **Plaza extended fully to the 12th & Marion corner with stairs located directly at the property line**
This configuration created an abrupt grade transition and presented a visual and physical barrier for visitors approaching from the corner, making access less intuitive and potentially discouraging use.
- **Entire building elevated 3'-6" above finished grade**
Both podiums and the plaza sat significantly above street level, increasing the sense of separation between the project and its surroundings. This height difference added complexity to circulation and diminished the permeability of the site.
- **Loading zone oriented west toward the campus**
Service functions faced the university side, increasing noise, visual impact, and operational conflict with primary student circulation routes.

Goals for Improvement

- **Strengthening campus connections** by relocating student-focused spaces to the South Podium and reducing grade barriers to make everyday access easier and more intuitive.
- **Improving public activation** by consolidating museum lobby and café functions, extending seating into the plaza, and creating clearer, more engaging pedestrian flow from 12th & Marion.
- **Enhancing safety and activity** with added staff offices along campus edges to provide more consistent presence and visibility throughout the day.
- **Reducing service impacts** by shifting loading to the north and capturing it within the parking area, minimizing disruption to the campus and improving the southern site frontage.
- **Making the plaza more open and inviting** through redistributed stepping, clearer art zones, and integrated plantings that soften edges and screen utilities.



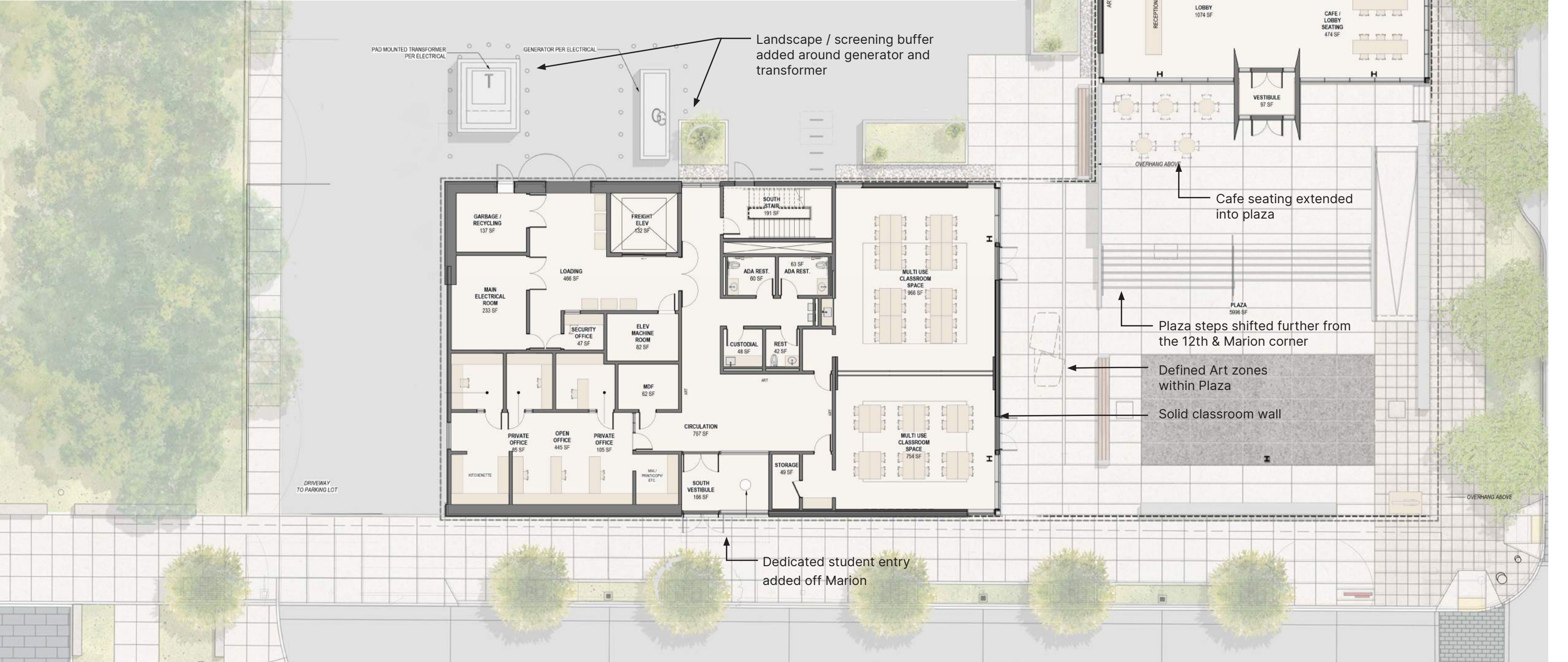
June 2025 Plan - Outdated

PREVIOUS DESIGN - JUNE 2025

Current Plan

- **Dedicated student entry added off Marion**
Establishes a safer, more intuitive arrival point for students and creates a direct connection to the Sinegal access area across the street, strengthening neighborhood walkability and visibility.
- **Plaza steps shifted further from the 12th & Marion corner**
Improves pedestrian flow into the plaza by opening up the corner, reducing congestion, and creating a more welcoming transition from the public sidewalk. The extended sidewalk now blends seamlessly into the plaza, and new paving patterns highlight this connection.
- **Integrated museum lobby and café**
These spaces have been combined to activate the building edge during off-hours and weekends. This creates a more vibrant, community-focused frontage that supports casual gathering and increases safety through passive activation.
- **Café seating extended into the plaza**
Encourages use of the outdoor space throughout the day, providing a more inviting public realm and creating opportunities for social interaction and community engagement.

- **Defined art zones within the plaza design**
Curated areas are incorporated for rotating artwork, student installations, or community-driven art initiatives—reinforcing the cultural mission of the building and creating year-round visual interest.
- **Solid classroom wall added along plaza edge**
Increases privacy for teaching spaces while providing a versatile façade for art displays, projected content, or future signage. This enhances both classroom functionality and the public-facing identity of the building.
- **Landscape / screening buffers added around generator and transformer**
Strategic plantings soften the visual impact of utility equipment, reduce noise, and create a more pleasant and cohesive edge condition for plaza visitors and neighbors.



Rendering from IAC 3

June 2025

- **Lobby originally located on the South Podium**
The earlier plan placed the museum lobby on the south side of the building. Under the current program arrangement, this location created conflict with academic and campus-focused uses, limiting the ability to dedicate the South Podium to student-oriented activities.
- **Conceptual interior expressed in dark steel**
Early renderings showed a predominantly black steel interior, including a dark soffit. While conceptual, the result produced a heavier, more oppressive atmosphere that lacked the warmth and openness desired for the museum's public entry experience.
- **Finish floor elevated 3'-6" above sidewalk grade**
In the original scheme, the entire podium and lobby sat significantly above street level. This elevation created a physical and psychological barrier to entry, placing the building on a pedestal and reducing accessibility from the surrounding public sidewalks and plaza.

Goals for Improvement

- **Strengthen campus alignment and clarify program organization**
Relocate the lobby to the North Podium so the South Podium can be fully dedicated to campus-facing and academic uses, improving circulation, identity, and day-to-day student activity.
- **Create a warmer, more welcoming arrival experience**
Replace the oppressive dark interior concept with a palette that incorporates wood, color, fabric, and lighter finishes to create an inviting and human-scaled entry. Use contrasting blackened steel elements intentionally for wayfinding rather than as the dominant material.
- **Improve accessibility and remove barriers to entry**
Reduce or strategically redistribute elevation changes so that the museum no longer sits disconnected above street grade. Establish a clear, dignified hierarchy between the two podiums rather than a single elevated platform.
- **Enhance indoor-outdoor visual connection**
Increase glazing and prioritize maximum transparency to better connect the lobby to the plaza and the street, signaling openness and inviting public interaction.
- **Create a more active and community-oriented threshold**
Integrate café seating, public art displays, and indoor-outdoor continuity to ensure the lobby is lively, inclusive, and visually engaging—even for those who may not enter the museum itself.



PREVIOUS MUSEUM ENTRY - JUNE 2025

Museum Entry - Current

- Lobby relocated to the North Podium and integrated with the café**
 Establishes a stronger public presence along 12th Avenue by combining two highly active, public-facing functions. This creates a clear civic front door and enhances visibility for museum visitors and the neighborhood.
- Plaza steps rise only on the north podium**
 Creates a deliberate hierarchy leading to the museum entrance, referencing the elevated thresholds found in traditional and historic architectural precedents. This subtle elevation shift reinforces the significance of the museum entry.
- Warm materials introduced for a more inviting arrival experience**
 Wood, steel, color, and fabric elements soften the architectural expression and create a welcoming transition from plaza to lobby. Vertical wood walls provide a warm backdrop that visually connects the entry sequence to the outdoor public space.
- "SU Red" vestibule used as a defining entry beacon**
 The most vibrant color on the building marks the museum's entry point. This vestibule is designed to be immediately recognizable from multiple vantage points including the parking lot, Marion Street, and 12th Avenue.
- Interior elements extend outward into the plaza**
 Sculptures, seating, and other lobby/café features continue into the exterior space, blurring the boundary between inside and out. This strengthens activation of the plaza and supports a seamless visitor experience.



Museum Lobby - Current

- **Warm, inviting material palette**

The lobby's materials are selected to create a comfortable and welcoming atmosphere. Natural wood brings warmth, while blackened steel "slots" provide contrast and assist with intuitive wayfinding by clearly marking points of entry and exit—toward the museum, restrooms, and the café.

- **Publicly viewable art displays**

Artwork extends into the café and lobby areas, allowing the community to experience art without financial barriers to entry. These displays are visible not only from within the lobby but from the exterior as well, helping the building serve as a cultural presence for the surrounding neighborhood.



Museum Lobby - Current

- Maximum visual transparency between interior and exterior

Large areas of glazing strengthen the connection between the street, plaza, and lobby. The glass is selected for the highest possible transparency, avoiding reflective coatings or tinting, while still achieving modern energy-efficiency standards. This ensures that activity inside the lobby is visible and inviting to the public.

- Integrated vestibules for both entries

Vestibules are required at both the museum and café entrances to accommodate building occupancy. By integrating them into the architectural design, the visual impact—particularly of the café vestibule—is minimized, maintaining a clean and inviting façade.

- Flexible operation and circulation

The vestibule integration allows for flexible operating hours, supporting different usage patterns for the museum and café while maintaining comfortable, safe entry and exit for visitors.

- Café seating integrated into the lobby-

Café tables and chairs extend into the lobby space, creating a lively, flexible environment that encourages public use throughout the day and enhances activation even during museum off-hours.



12th Ave Rendering from IAC 3

June 2025

- Cafe located off of 12th ave. with a classroom adjacent.
- Entry located at grade of 12th.
- Overall design at this stage is very conceptual and acted more as a solid vs void diagram in initial design studies.
- Conceptually the intent was for the building to be wrapped in terracotta. Through the IAC meetings, it was determined to feel ominous and potentially dark. Design studies were done and it was determined that a clean white finish was desired. See updated renderings. Art projections, artwork, etc. are intended to be integrated into the design.



Cafe / 12th Ave - Current

- Through the program development, it was determined that the cafe and lobby made more sense to be paired together. This is due to the hours of operation, allowing for the north podium to be open at longer hours than if each was functioning individually.
- Material development added to cafe entry, lobby design, vestibules, etc.
- **Black painted steel panels added to give the cafe entry more prominence** and to help support the steel canopy that provides weather protection to the street.
- **Signage integrated into the steel canopy** to be applied. (final signage TBD)
- **A white soffit ceiling** was added to brighten up the space and to allow for projections, artwork, etc be integrated into the plaza design. This language is continued into the lobby and classroom spaces.

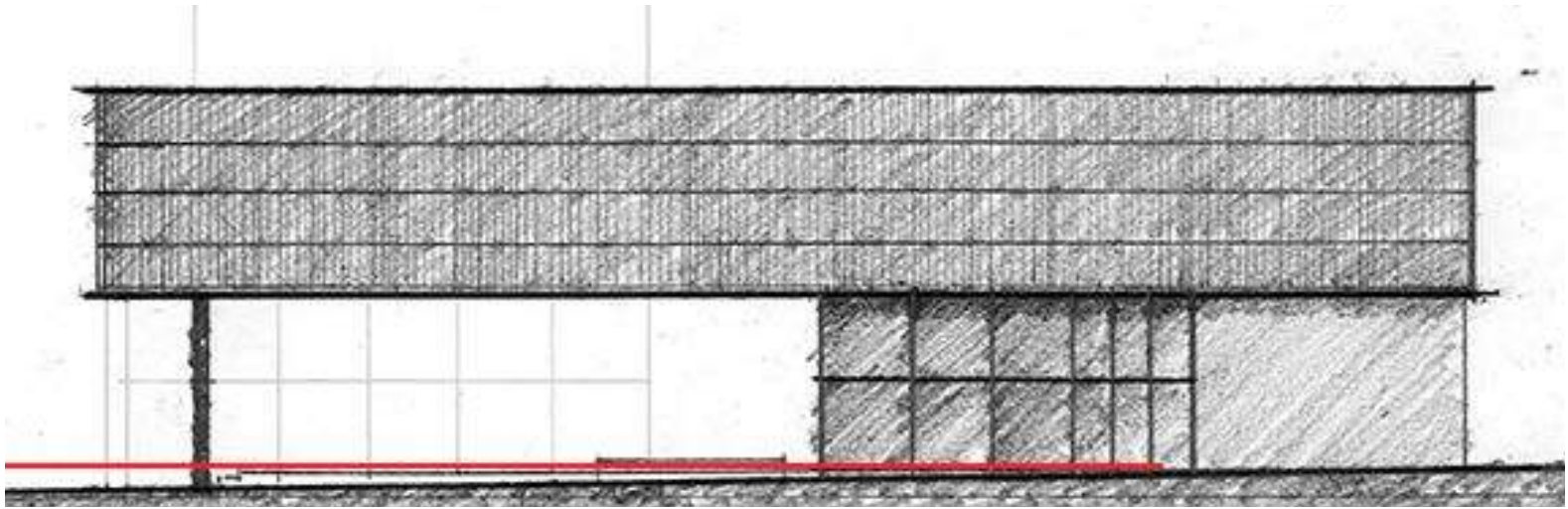


12th Ave Elevation

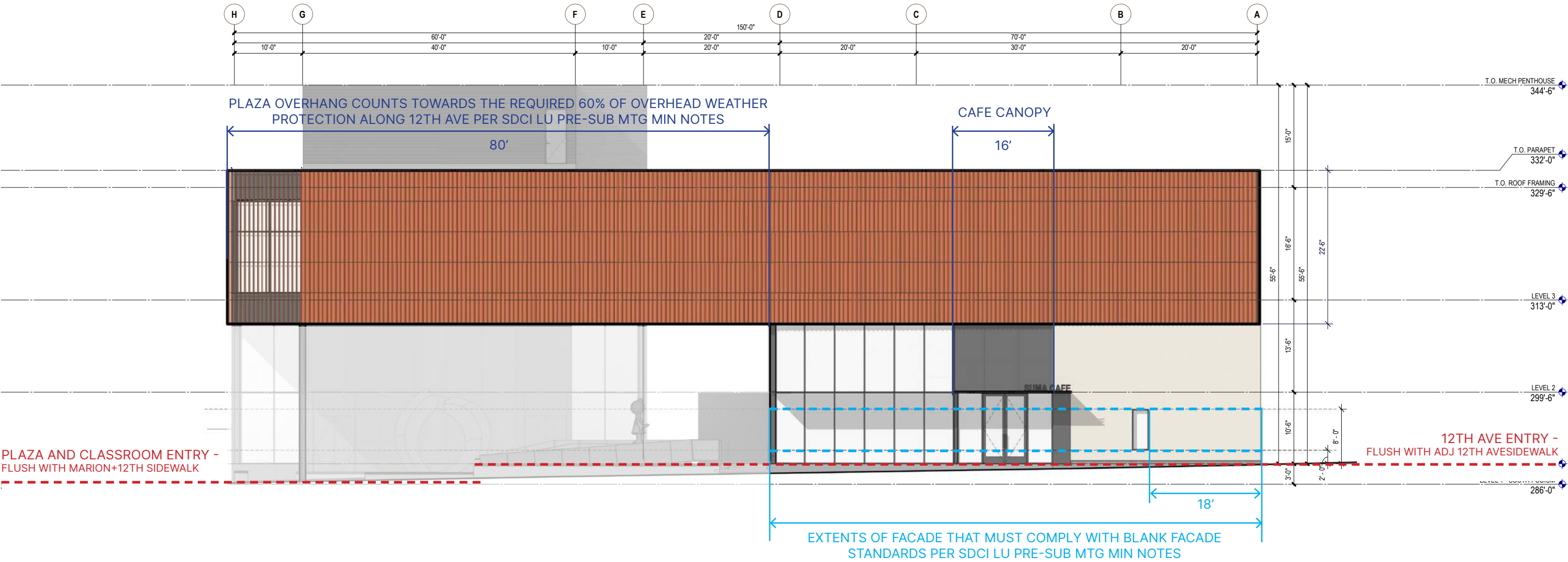
- The entry from 12th Ave remains at grade with the adjacent sidewalk for clear connection and access to the museum.
- The Plaza and Classroom entries are set about three feet lower to align with the grade at the corner of 12th and Marion. This allows for direct access to the Plaza and creates an extension of the sidewalk into the Plaza.
- 'Blank' Facade requirements (SMC 23.47A.008) - Per SDCI

LU-Presub meeting minutes, the open portion (plaza) along 12th does not include a facade, and therefore 23.47A.008 is not required. Blank facade requirements only apply to street level facade, which the plaza does not have.

- Overhead weather protection requirements (SMC 23.84A.028-"O") Per SDCI LU-Presub meeting minutes, the overhang above the plaza meets the requirement of overhead weather protection.



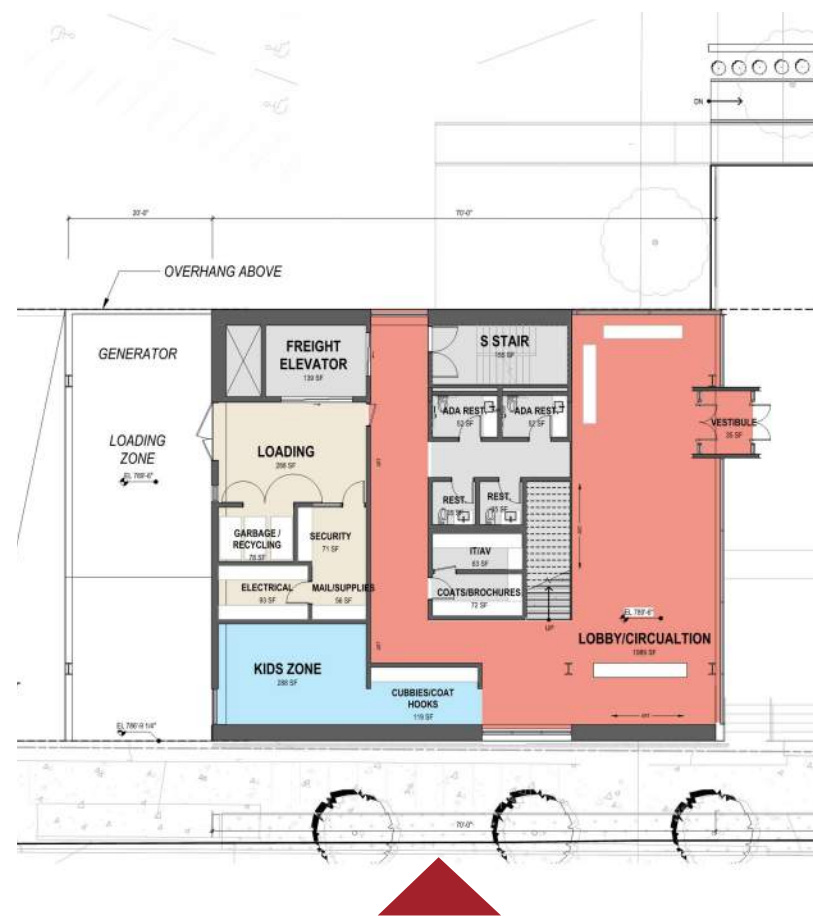
June 2025 Elevation - Outdated



Marion St Rendering from IAC 3

June 2025

- In early IAC meetings the south facade turned its face onto Marion Ave. Through our program development, this was identified and changes were made to help remedy.
- In the original program development, the lobby and art storage spaces were located along this facade. Due to security concerns, access off of Marion was limited/non-existent.
- On off hours, this podium would be closed and inactive. Something the design team sought to update.



Marion St - Current

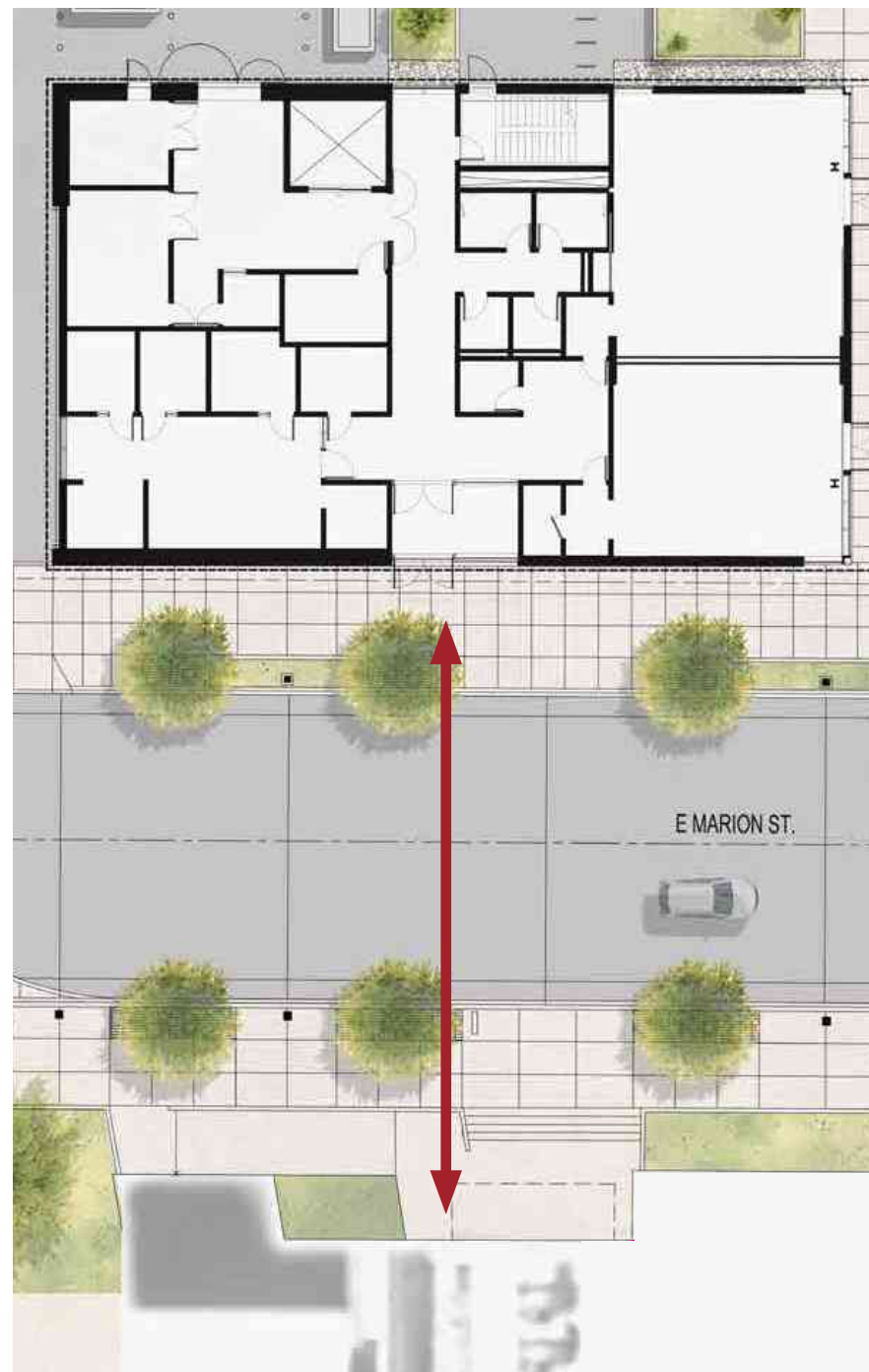
- Through the program development, the **south podium was reallocated to serve the academic purposes of the museum.** This allows the south podium to be active in different hours than the museum.
- Additionally, the museum and academic offices are located in this podium, increasing the amount of activity during school hours.
- **A new building entry off of Marion** was added to allow for ease of flow between Sinegal and SUMA.
- The vestibule is designed in a way to incorporate art into the elevation, whether that is a sculpture, as shown, student art, paintings, or even event/student signage. This area can also be used for ride share waiting.
- **A steel awning** protrudes from the building serving as a visual aid on building entry, place for signage, and for overhead weather protection.



Marion St - Current

Visual Entrance Connection

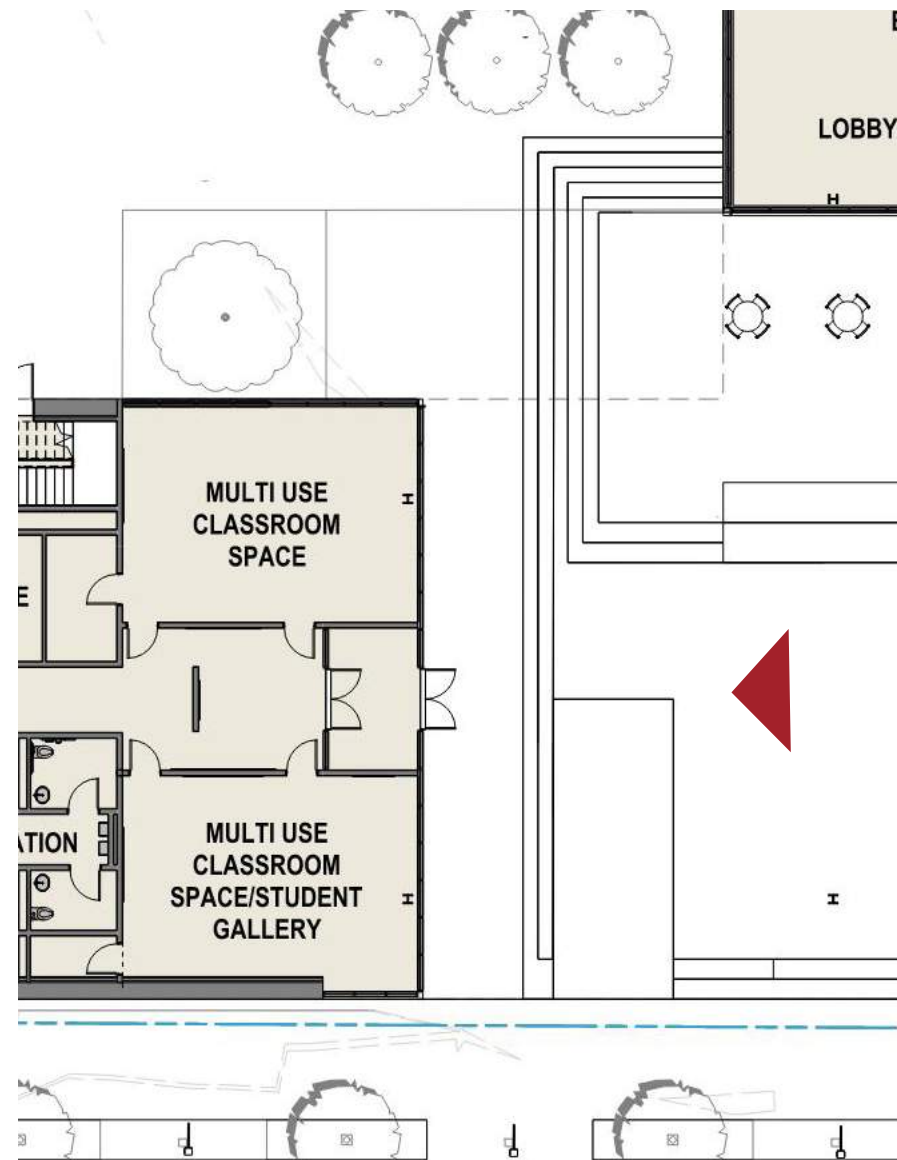
- The new Marion St entry for SUMA is aligned with the building entry to Sinegal across the street. This reinforces the concept of the 'academic' entrance off of Marion.



Classroom Elevation

June 2025

- The classroom elevation was mostly glass and did not clarify hierarchy between the Museum entrance and classroom entrance.
- There was also concern about a lack of privacy and potential for distraction in the classrooms that could take away from learning.



PREVIOUS DESIGN - JUNE 2025

Classroom Elevation - Current

- **Solid classroom wall added along plaza edge**
Increases privacy for teaching spaces while providing a versatile façade for art displays, projected content, or future signage. This enhances both classroom functionality and creates a hierarchy between the two facades flanking the plaza.



Parking Lot Approach - Current

- **Raised bioretention planters** added to collect and filter rainwater runoff from the roof.
- **Ramping sequence removed** from parking lot side - ramp to museum entry is provided within the plaza.
- **Benches** added for a pick up / drop off zone.
- **Landscape / screening buffers** added around generator and transformer.

Strategic plantings soften the visual impact of utility equipment, reduce noise, and create a more pleasant and cohesive edge condition for plaza visitors and neighbors.



View from Campus - Current

- The west elevation of the south podium was designed in a way to incorporate artwork or signage into the building. Where shear walls are not needed, metal panel walls are incorporated to allow for ease of art handling and maximum flexibility.
- Offices were located on this facade to have a “eyes” towards the seal for increased security as well as to have a more active program element on this facade. Prior design presented located loading on this facade.
- The gallery level is wrapped in terracotta to provide additional shading (increased solar performance) from the west facing sun.



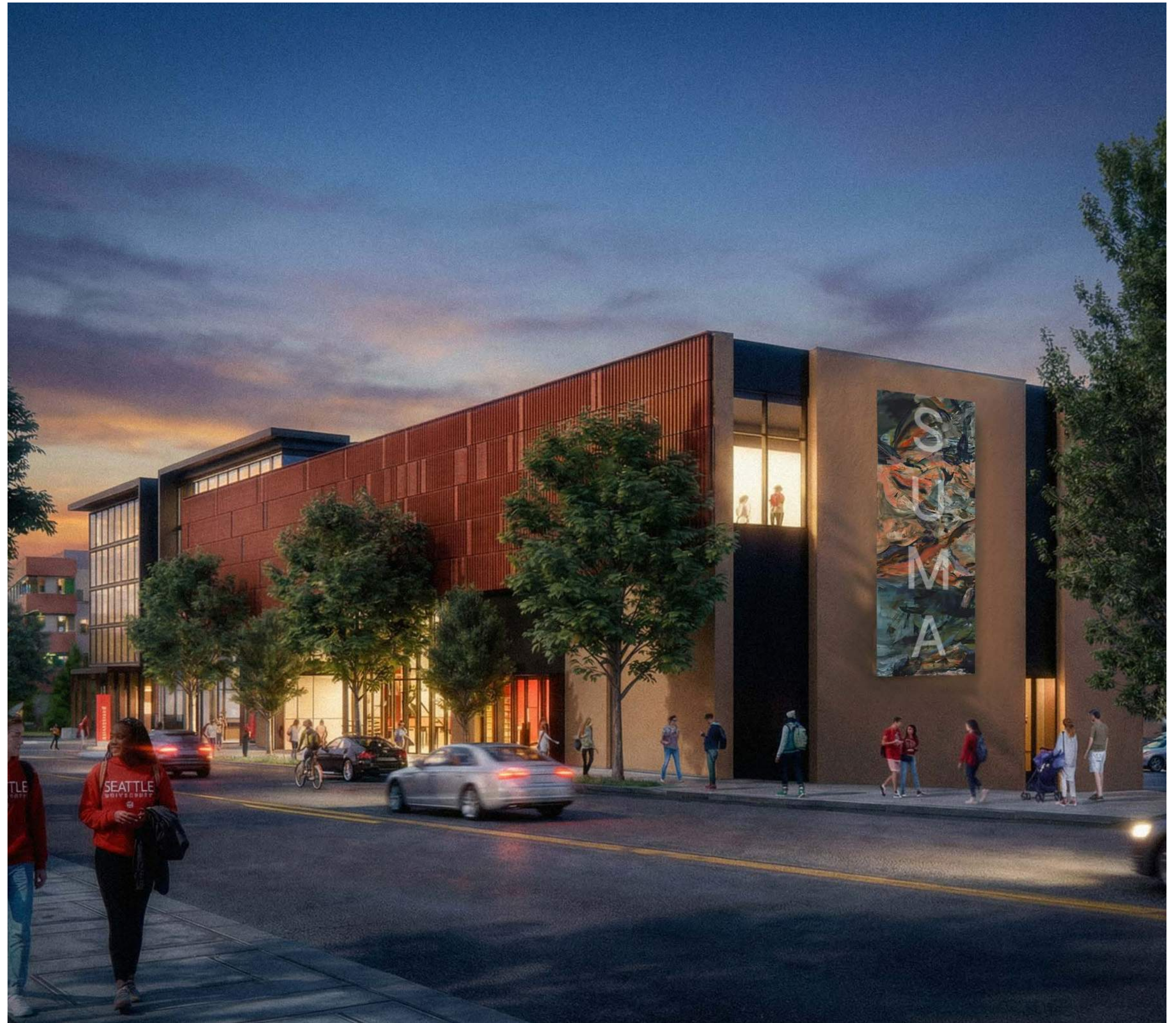
View from 12th Ave - Current

- The view from along 12th Ave features an open window glimpse into the third floor Gallery. This allows for a moment of reflection within the Gallery and for the public to see an activated space.
- The warm colored stucco extends to the roof level of this facade to create a large space for potential Museum signage, custom artwork, etc.
- The terracotta panels continue from Marion street around to the length of 12th Ave and create interest and movement along the street facing facade.

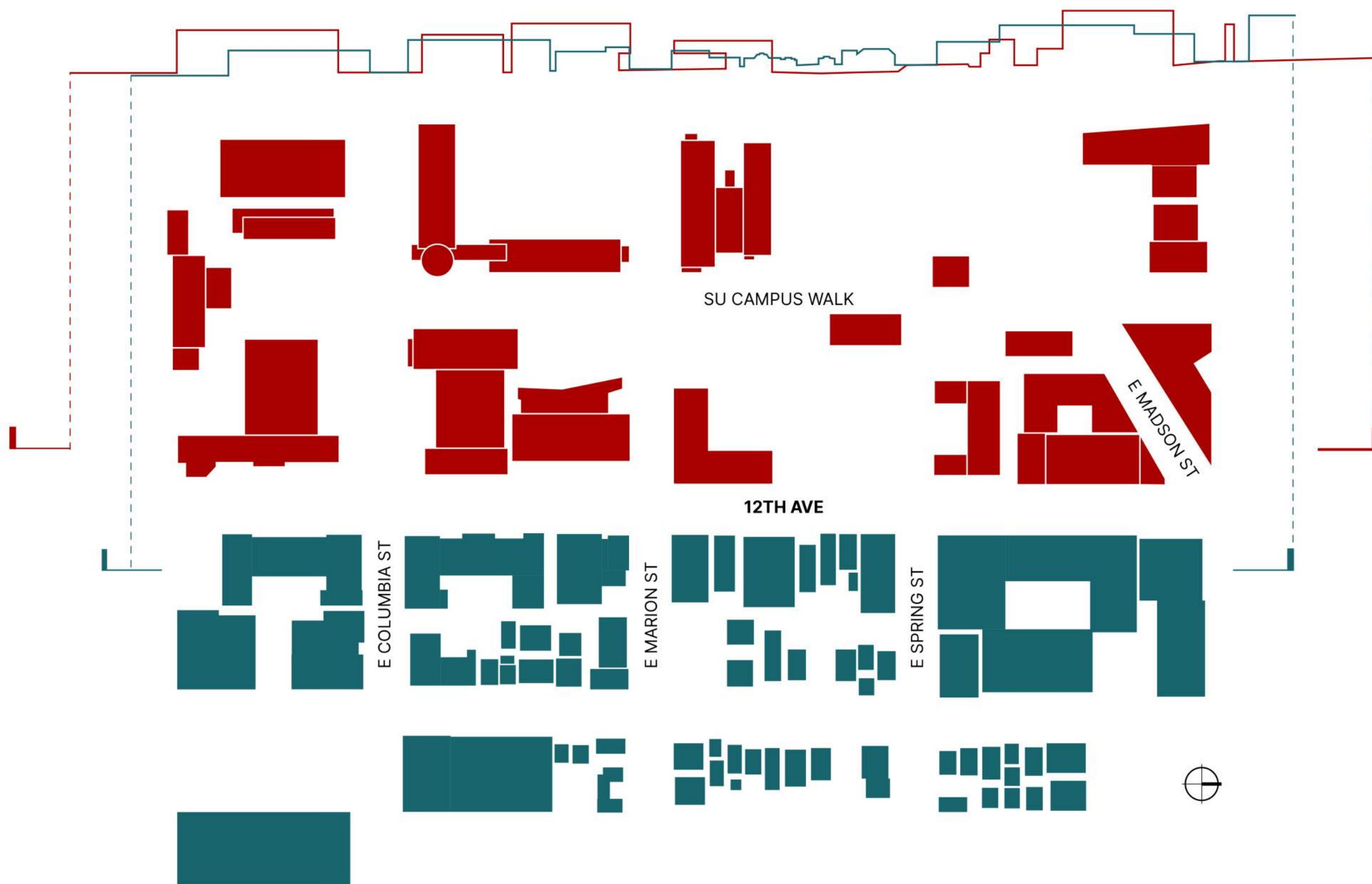


View from 12th Ave - Current

- The view from along 12th Ave features an open window glimpse into the third floor Gallery. This allows for a moment of reflection within the Gallery and for the public to see an activated space.
- The warm colored stucco extends to the roof level of this facade to create a large space for potential Museum signage, custom artwork, etc.
- The terracotta panels continue from Marion street around to the length of 12th Ave and create interest and movement along the street facing facade.



NEIGHBORHOOD CONTEXT



SUMA is located on the west side of 12th Avenue, aligning with the larger institutional buildings rather than the smaller, low-rise commercial context across the street on the residential east side. Its scale helps fill a gap on the west side and reinforces the institutional character of the corridor. The sections above highlight the contrast between the urban grains on either side of 12th Ave. The museum's design works to bridge these conditions, creating a connection between both scales.



Although the east side of 12th Avenue is currently characterized by low-rise development, planned projects like 'Focus on 12th' could significantly change the neighborhood context. SUMA's terracotta gallery bar along the elevation aligns with the scale of the Sinegal Center while preserving public space through the plaza and activating the street with uses such as the café along 12th.

12TH AVE - MAX HEIGHT

~20'-0 " ABOVE FINISH GRADE

~10'-0" ABOVE FINISH GRADE

12TH AVE - AVG GRADE

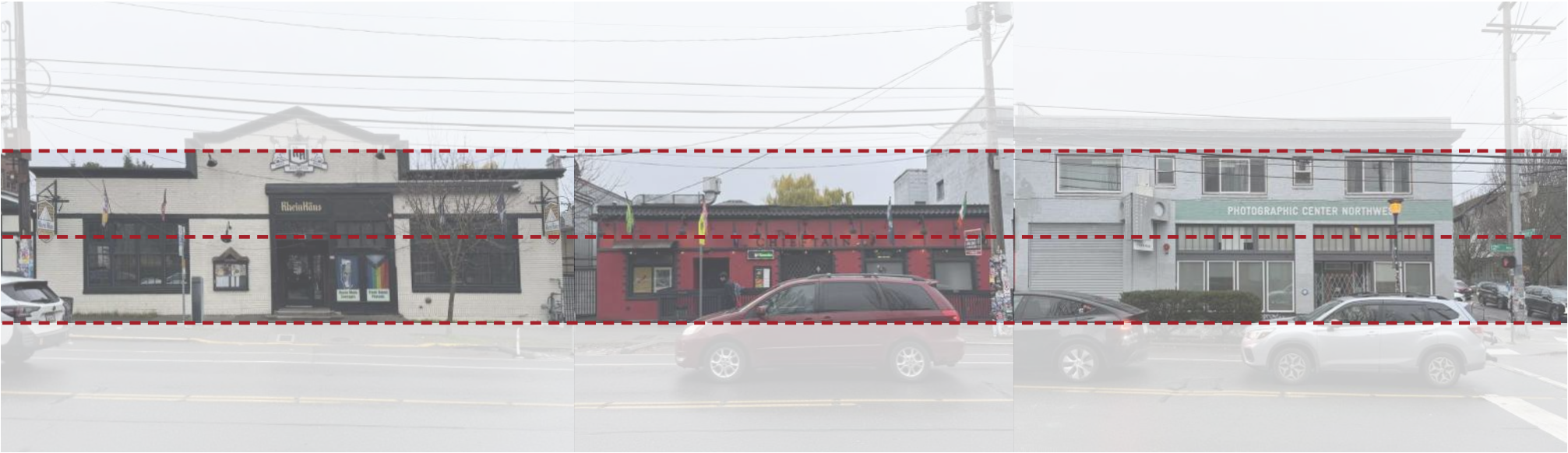


← PLAZA LOBBY CAFE →

~20'-0 " ABOVE FINISH GRADE

~10'-0" ABOVE FINISH GRADE

12TH AVE - AVG GRADE



← CAFE LOBBY PLAZA →



LANDSCAPE DEVELOPMENT

CONTEXT DIAGRAM AND OBJECTIVES

CAMPUS AND NEIGHBORHOOD CONNECTIONS

URBAN CONTEXT

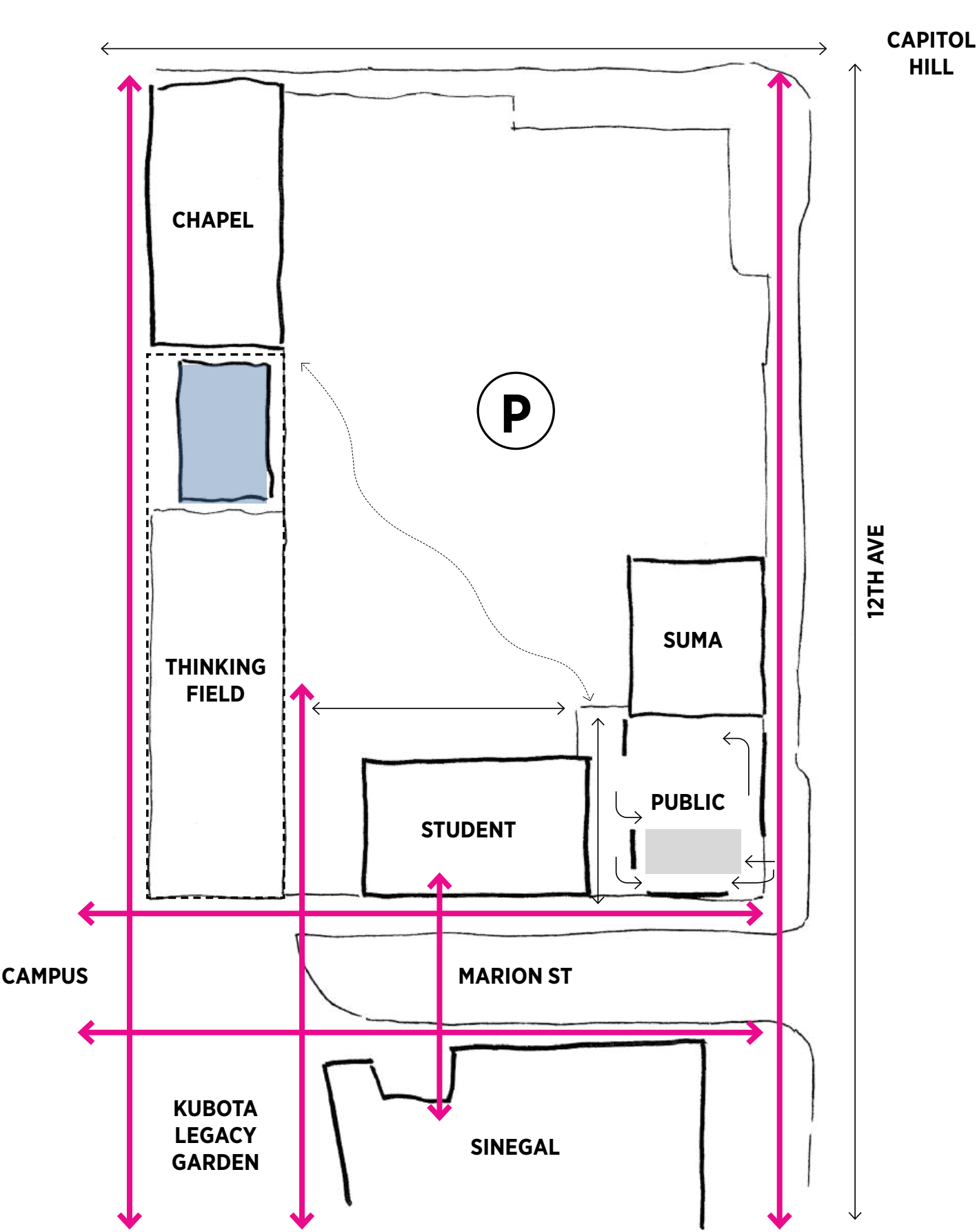
- ENHANCE CAMPUS CONNECTIONS
- STRENGTHEN RELATIONSHIP TO THE URBAN FABRIC
- REFLECT CHAPEL - OPEN SPACE RELATIONSHIP
- REINFORCE RELATIONSHIP TO CAMPUS - SINEGAL
- DEVELOP SENSE OF ARRIVAL - GATEWAY

PLAZA

- PROVIDE SEATING
- FACILITATE ACCESS

ART AND EVENTS

- OFFER ENGAGEMENT WITH ART
- MAINTAIN SPATIAL FLEXIBILITY



PLAZA DESIGN EVOLUTION

SCHEMATIC DESIGN

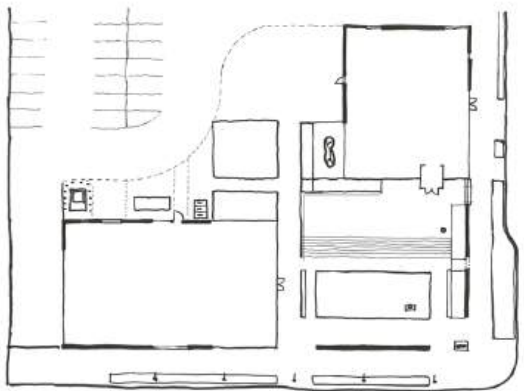
IAC 3



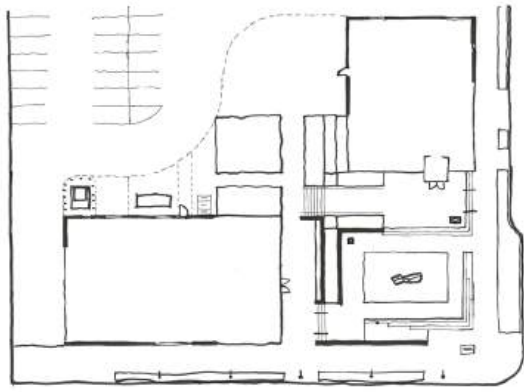
ELEVATED PLAZA

DESIGN OPTIONS

IAC 4



STREET LEVEL PLAZA + ELEVATED PLINTH



BI-LEVEL ELEVATED PLAZAS

- Attributes
- + Street Level Plaza
 - + Potential for Indoor/Outdoor Cafe
 - + Visual connection and Engagment at street

SYNTHESIZED DESIGN RESPONSE

IAC 5

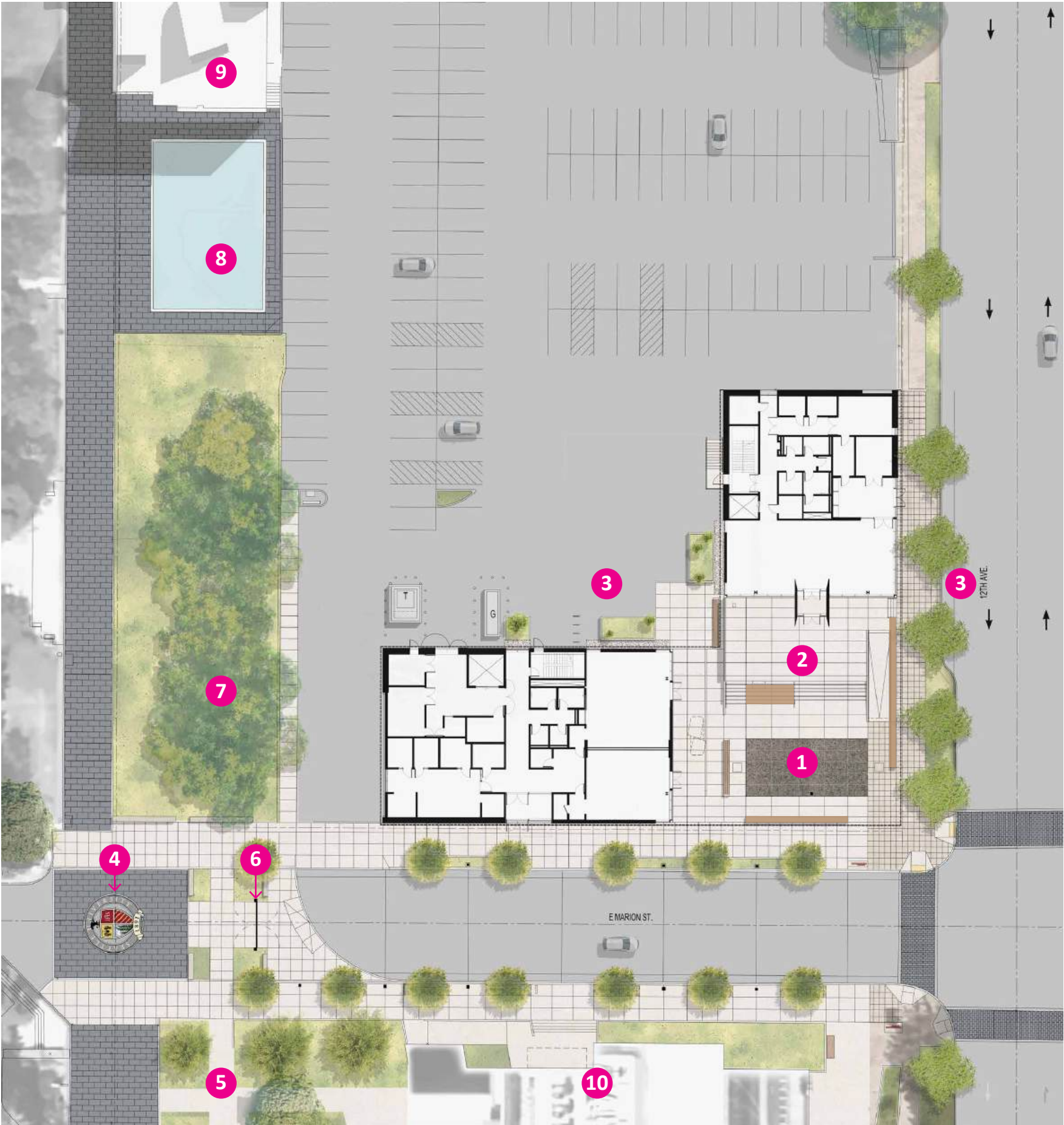


URBAN PLAZA + CAFE PLINTH

CONCEPT | PLAZA + PLINTH

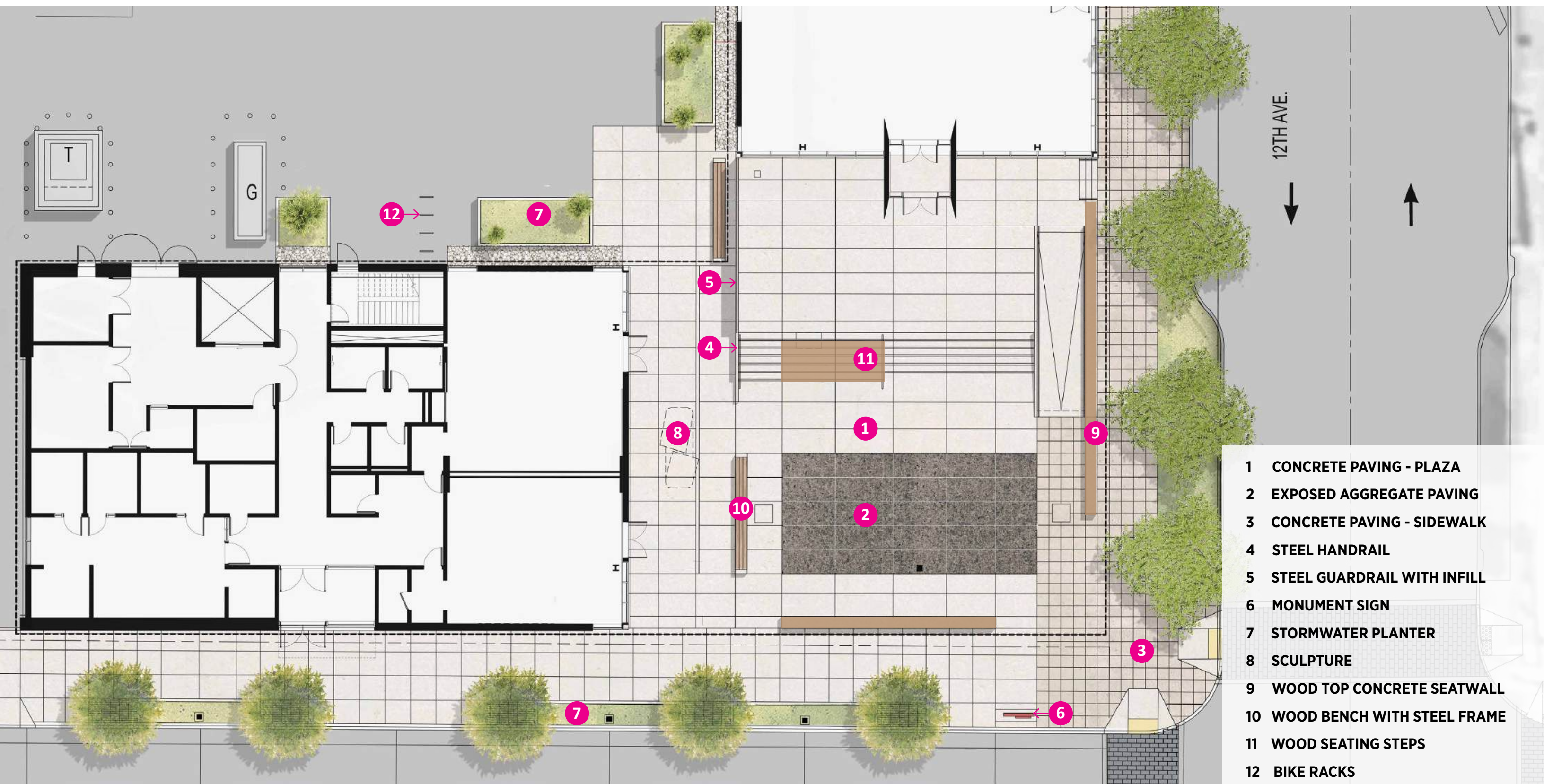
ILLUSTRATIVE PLAN

- 1 URBAN PLAZA
- 2 CAFE PLINTH
- 3 DROP-OFF AND RIDE SHARE
- 4 SEATTLE UNIVERSITY SEAL
- 5 KUBOTA LEGACY GARDEN
- 6 ENTRANCE GATE
- 7 THINKING FIELD
- 8 REFLECTION POOL
- 9 CHAPEL OF ST. IGNATIUS
- 10 SINEGAL BUILDING



ENLARGEMENT PLAN

PLAZA & PLINTH



- 1 CONCRETE PAVING - PLAZA
- 2 EXPOSED AGGREGATE PAVING
- 3 CONCRETE PAVING - SIDEWALK
- 4 STEEL HANDRAIL
- 5 STEEL GUARDRAIL WITH INFILL
- 6 MONUMENT SIGN
- 7 STORMWATER PLANTER
- 8 SCULPTURE
- 9 WOOD TOP CONCRETE SEATWALL
- 10 WOOD BENCH WITH STEEL FRAME
- 11 WOOD SEATING STEPS
- 12 BIKE RACKS

MATERIAL + TEXTURE PALETTE



PLAZA AT THE CORNER OF 12TH AND MARION

VI

+ Invitation to enter
at the intersection
of 12th and Marion

+ Sidewalk paving
engages the edge

+ Plaza extends to
Marion

+ Paving 'carpet'
grounds the urban
plaza

+ Clear circulation
for all users

+ Edges defined by
seating



PLAZA FROM MARION

VII

- + Invitation to experience art
- + Continuous experience from sidewalk to plaza
- + Permanent and moveable seating for flexible use
- + Clear wayfinding to SUMA



SUMA NORTHWEST ENTRY

VIII

+ At grade connection to 12th and Marion

+ Stormwater planters and green buffer

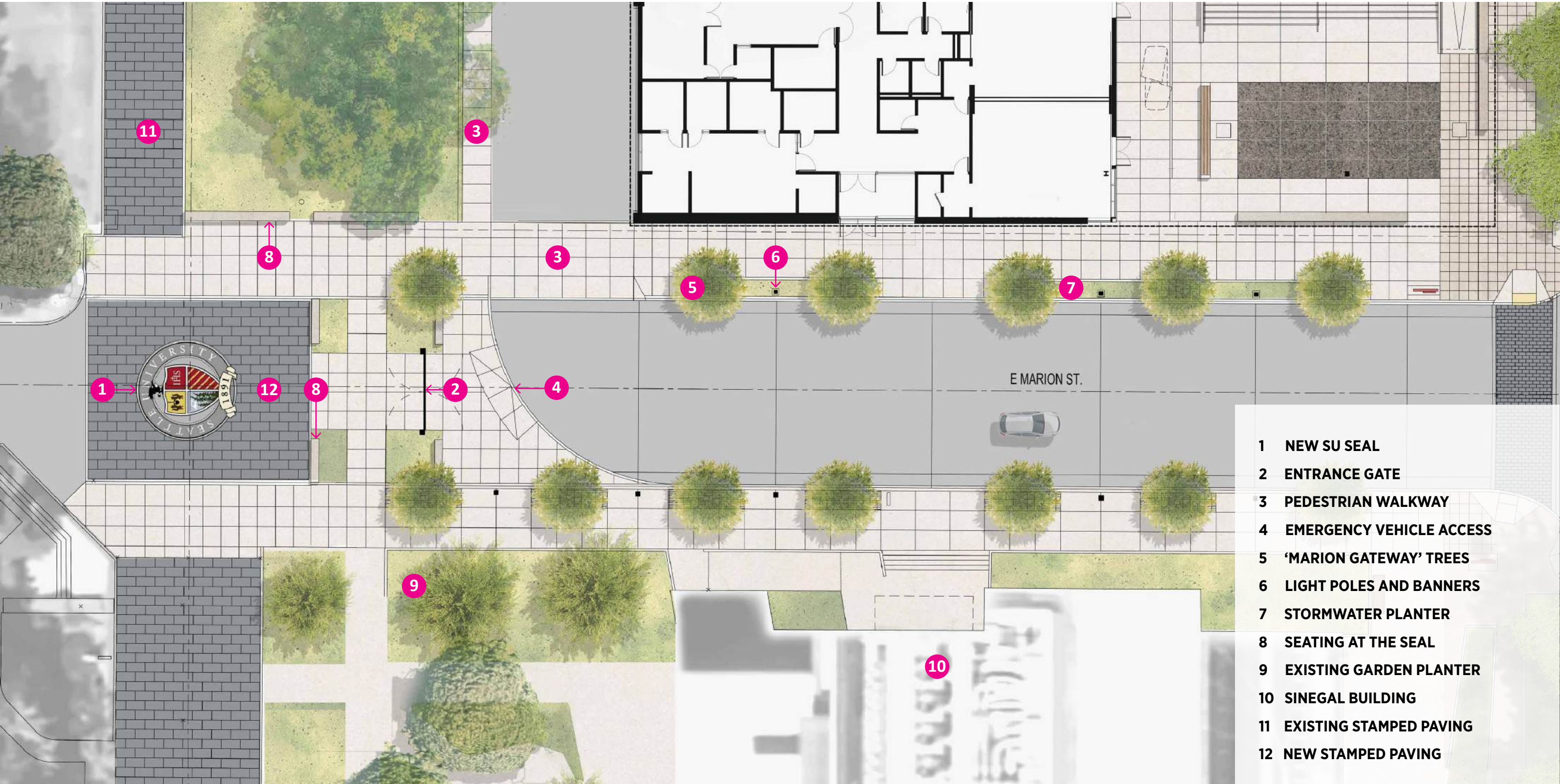
+ Dropoff and Rideshare seating area

+ Unified entry experience from parking



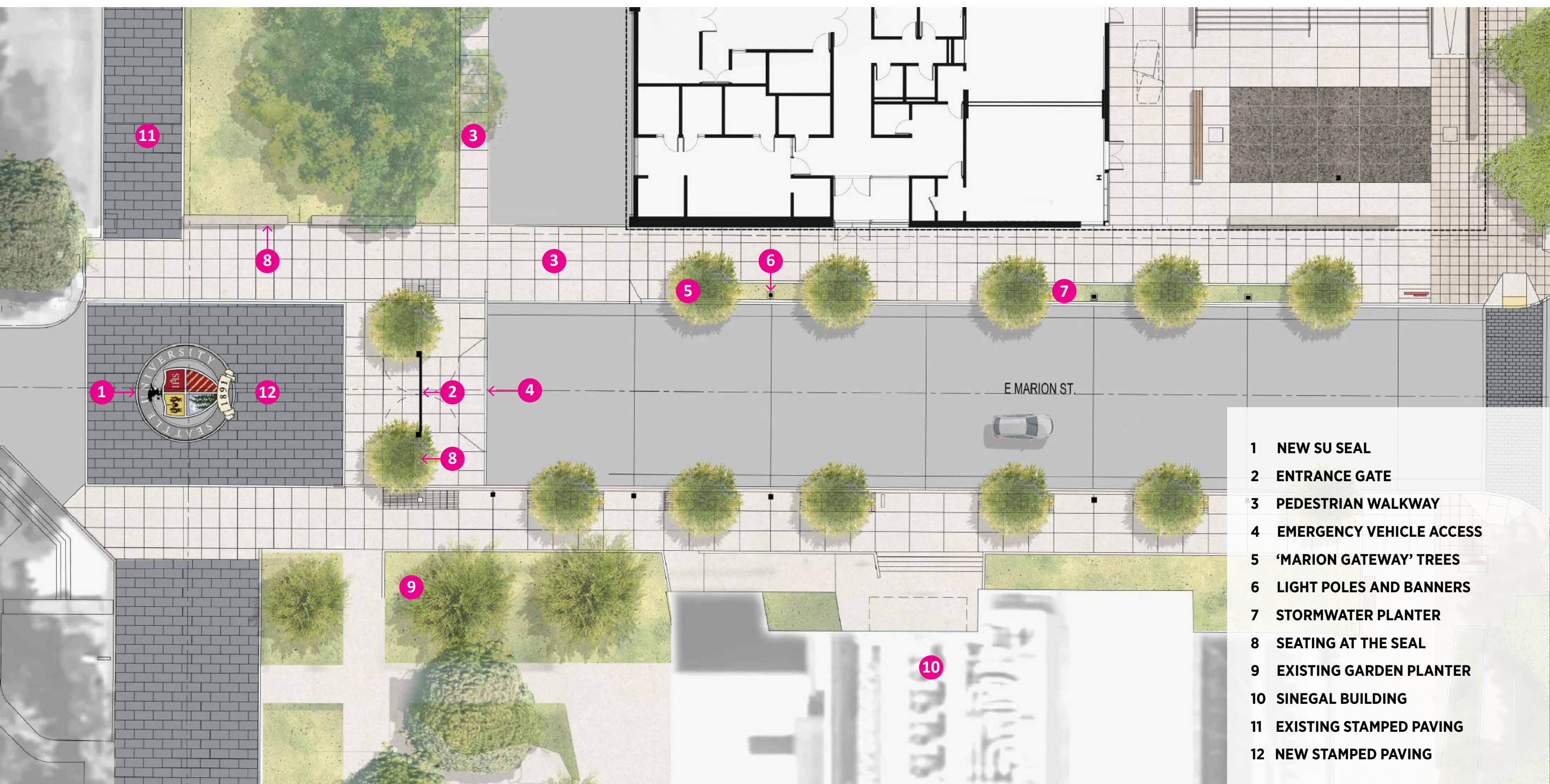
ENLARGEMENT PLAN OPTION 1

MARION GATEWAY + SEAL ZONE



ENLARGEMENT PLAN OPTION 2

MARION GATEWAY + SEAL ZONE



- 1 NEW SU SEAL
- 2 ENTRANCE GATE
- 3 PEDESTRIAN WALKWAY
- 4 EMERGENCY VEHICLE ACCESS
- 5 'MARION GATEWAY' TREES
- 6 LIGHT POLES AND BANNERS
- 7 STORMWATER PLANTER
- 8 SEATING AT THE SEAL
- 9 EXISTING GARDEN PLANTER
- 10 SINEGAL BUILDING
- 11 EXISTING STAMPED PAVING
- 12 NEW STAMPED PAVING

A CAMPUS PERSPECTIVE

XI

+ Marion Gateway
as part of campus
circulation

+ Student entry
reinforces campus
environment with
connection to
Sinegal

+ Vehicular access
limited to parking
lot



MARION GATEWAY

XII

- + Celebrate campus atmosphere

- + Provide sense of place and wayfinding

- + Prioritize the pedestrian



MATERIAL PALETTE

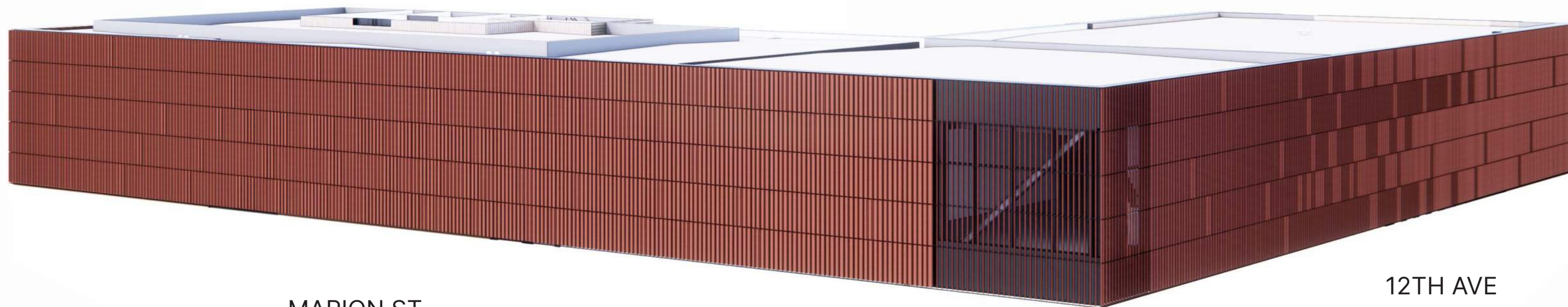
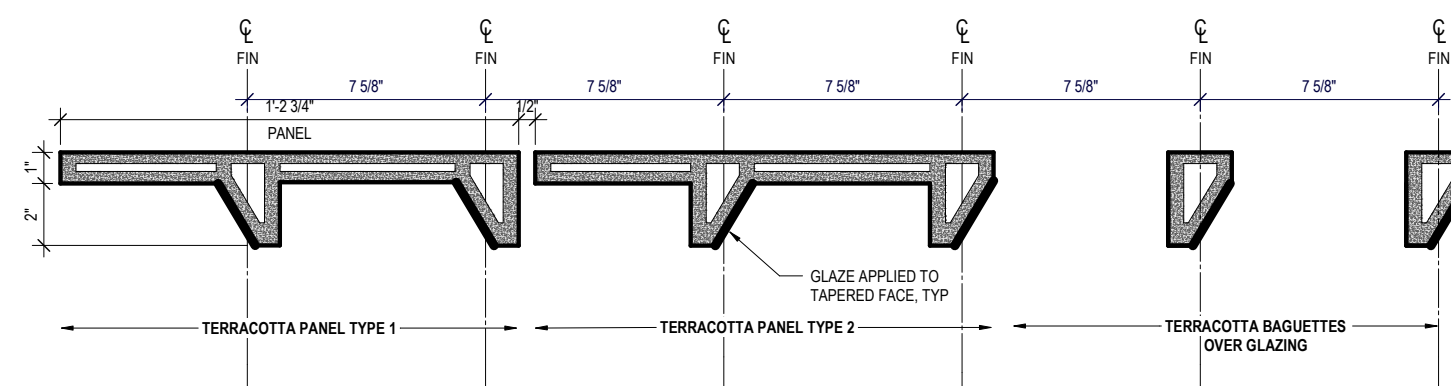
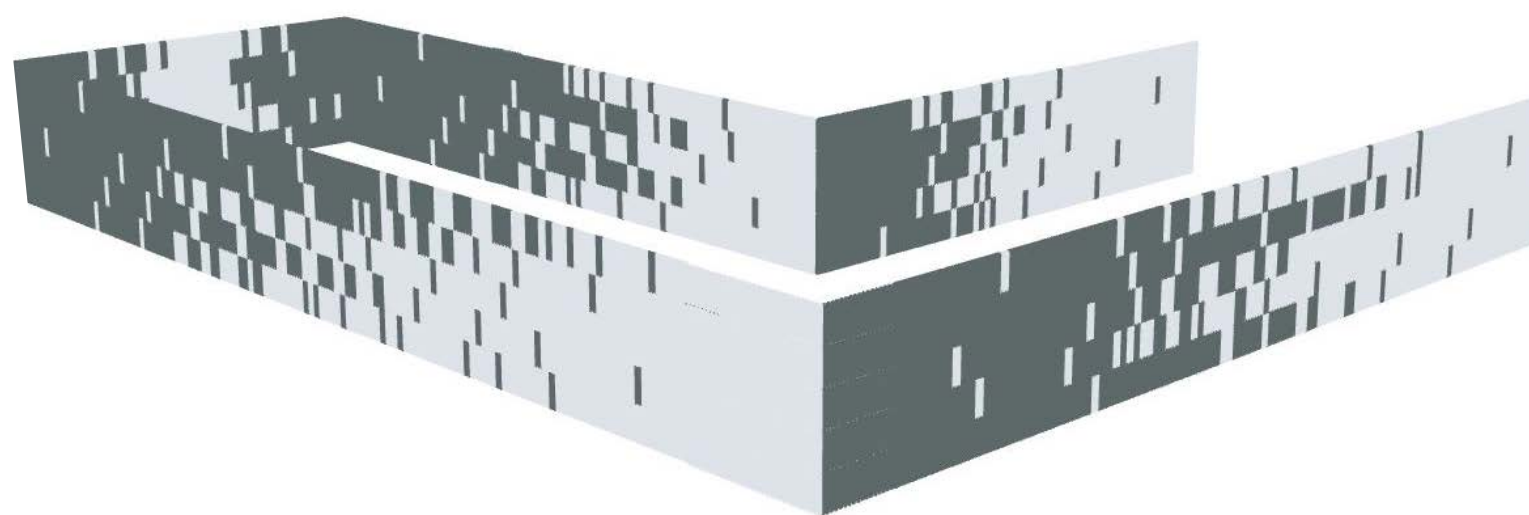
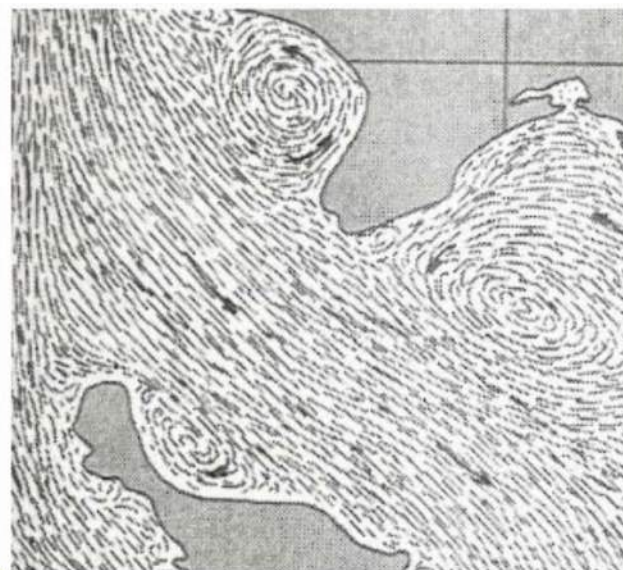
Material Palette - Exterior

- 1. STUCCO - EXTERIOR CLADDING
- 2. STUCCO - SOFFIT
- 3. TERRACOTTA
- 4. METAL PANEL
- 5. POLISHED CONCRETE FLOOR
- 6. MUSEUM ENTRY ACCENT
- 7. TK DOOR HARDWARE



Material Palette - Exterior





MARION ST

12TH AVE



EQUINOX 11AM - SOUTH LIGHT



EQUINOX 5PM - WEST LIGHT





NIGHT BEACON

Soffit as a 'Canvas'

- The soffit design is intended to be a 'canvas' for the use of the future Museum Curator. By leaving the soffit as a 'blank' canvas, this provides the most flexibility in the future for the Museum Curator to commission an art piece, project art, etc.
- Warmth has been added to the plaza design through wood topped benches, wood throughout the lobby, and a warmer stucco colored finish. The sandy colored stucco is a nod to the St Ignatius chapel stucco finish beyond.
- The lighting is intended to provide a soft and consistent glow around the perimeter of the plaza. There are additional lines of light introduced to help break down the scale of the activity in the plaza below.



Material Palette - Interior

1. HOT ROLLED STEEL - ACCENTS
2. BIRCH PLYWOOD - PANELING
3. QUARTZ COUNTERTOP - COFFEE BAR
4. DOUG FIR SOLID WOOD - RECEPTION
5. WALK OFF MAT - ENTRIES
6. CONCRETE - THROUGHOUT
7. CORK WALL PANELING - CLASSROOM
8. CARPET TILE - CLASSROOM
9. CARPET TILE - OFFICES
10. WALL TILE, SCHEME A - RESTROOMS
11. WALL TILE, SCHEME B - RESTROOMS
12. QUARTZ COUNTERTOP - RESTROOMS
13. FIXTURE FINISH - RESTROOMS

