

Pike Place Market Historic Commission Corrections Letter
Ricchio's Sausage Co. Response 3/11/2025

Dear Commission Coordinator please find detailed response to your questions below.

1. Provide a full scope of work – a bullet point style list of all changes that are being proposed (signs, storefront paint, footrail, barstools, ship lap, and any other physical features that are being proposed).

This project includes the design, fabrication, and installation of new branded signage and physical storefront/bar enhancements to Ricchio's Sausage Co. in Pike Place Market. The scope includes multiple types of custom signage (dimensional logo, menu board, blade signs), including wall treatments, and painted surfaces. All work is documented as a new order with Identity Signs and includes specified materials, finishes, mounting methods, and quantities.

Please note: footrail removed from plans.



Detailed List of Proposed Changes & Physical Features

Signage (Fabrication + Installation)

- Dimensional Logo Sign
 - Single-sided dimensional logo
 - ½" thick non-glare acrylic
 - Painted black (Matthews Paint N923SP)
 - 2" stud mount
 - Flush-mounted installation
- Dimensional Menu Board
 - Large-format menu signage
 - Main menu panel constructed of ½" wood with 6mm PVC (Sintra), finished in black chalkboard paint
 - Additional ¼" acrylic hanging inserts
 - Eyelet screws used to hang interchangeable inserts
 - Flush-mounted installation
- Blade Sign – Channel Letter Style
 - Double-sided channel lettering blade sign
 - Black face and back
 - Aluminum backs (.063")
 - Marquee lighting (bulb or rope; warm or bright white)
 - Mounted using 2" stud mount with flush appearance
- Blade Sign – Acrylic Panel Style
 - Single-sided blade sign
 - ¼" thick non-glare acrylic
 - Painted to match (paint color TBD likely Benjamin Moore Dark Tea IRGB: 37, 90, 94)
 - Flush-mounted installation

Storefront / Finish Changes

- Storefront & Paint
 - Painted surfaces coordinated to match signage and shiplap elements
 - (paint color TBD likely Benjamin Moore Dark Tea IRGB: 37, 90, 94)
- Wall Treatments
 - White-washed brick with plaster finish (Hand applied plaster, custom shaped & painted to give weathered brick look)
 - Shiplap siding
 - Painted to match overall design
 - Additional painted details applied directly to shiplap surface (shiplap will be adhered to customer equipment)

2. Provide the dimensions of the storefront. Provide elevation dimensions (heights) of foot rail, bar stools, blade sign, ship lap counter.

Bar top	38"
---------	-----

Bar stool seat	30"
Shiplap bar front	Floor to 41"
Blade sign mounting	Shown on page 3 of ID Signs document

3. Provide details about all proposed paint colors, and details about all proposed materials including bar stools, steel rail, counter area material and artwork finishes.

Black (Primary Signage Finish)

- Color: Black
- Paint Brand / Spec: Matthews Paint – N923SP
- Used On:
 - Dimensional logo signage
 - Blade sign face and backs (where specified)
- Finish Type: Painted finish on acrylic or aluminum substrates

Black Chalkboard Paint

- Color: Black
- Finish: Chalkboard paint
- Used On:
 - Dimensional menu board background
- Substrate: Acrylic panel (½" thick)

Signage Materials

Dimensional Logo

- ½" thick non-glare acrylic
- Painted black (Matthews Paint N923SP)
- 2" stud mount

Dimensional Menu Board

- ½" acrylic panel
- Finished with black chalkboard paint
- Additional ¼" acrylic hanging inserts
- Eyelet screws for hanging inserts

Blade Sign – Channel Letter Style

- Faces and backs painted black

- Backs: .063" aluminum
- Lighting: Marquee bulbs or rope lighting (warm or bright white)
- Double-sided channel lettering construction

Blade Sign – Acrylic Panel Style

- ¼" thick non-glare acrylic
- Painted to match (paint details not specified)

Counter / Bar Front Area

- Shiplap siding
 - (paint color TBD likely Benjamin Moore Dark Tea IRGB: 37, 90, 94)
 - Additional painted details applied directly to shiplap (Shiplap will be adhered to customer equipment)
- Wall finish behind / adjacent:
 - White-washed brick with plaster finish (Hand applied plaster, custom shaped & painted to give weathered brick look)

4. Provide details on how the signs and lettering will be attached to the brick. New holes in brick should be avoided.

2" Stud Mount - Studs are installed into mortar joints, not brick faces

- Used for:
 - Dimensional logo
 - Dimensional menu board
 - Blade signage

Flush Mount Installation

- Used for:
 - Dimensional logo
 - Menu board
 - Blade signs

5. Provide a site plan showing the location of the work in relation to surrounding pedestrian ways, shops, and any major features. Include a north arrow.

Below attached.

6. Provide photos of the existing storefront: one straight-on, one looking north, one looking south (to show the storefront from different angles).

Below attached.



Client
Swire Coca-Cola Bellevue
Washington

Contact
Chelsea Branom

Date | Revision | Drawn By
01.21.26 | New Order | BRW
02.09.26 | DC | BRW
02.11.26 | DC | BRW
02.19.26 | DC | BRW
03.04.26 | DC | BRW

Approval: _____

Date: _____

© 2025
Identity Signs

All designs represented are the sole property of identity signs, and may not be reproduced in part or whole without written permission from Identity Signs.

Sales Person
Nick Bruno

Project Manager
Nick Bruno

Designer
Brandon Williams



Proposed Signage

Job # 223635 **ITEM 1** Dimensional Logo | Qty: x1 | Single-Sided

FOR APPROVAL

Color Specifications

Material Specifications

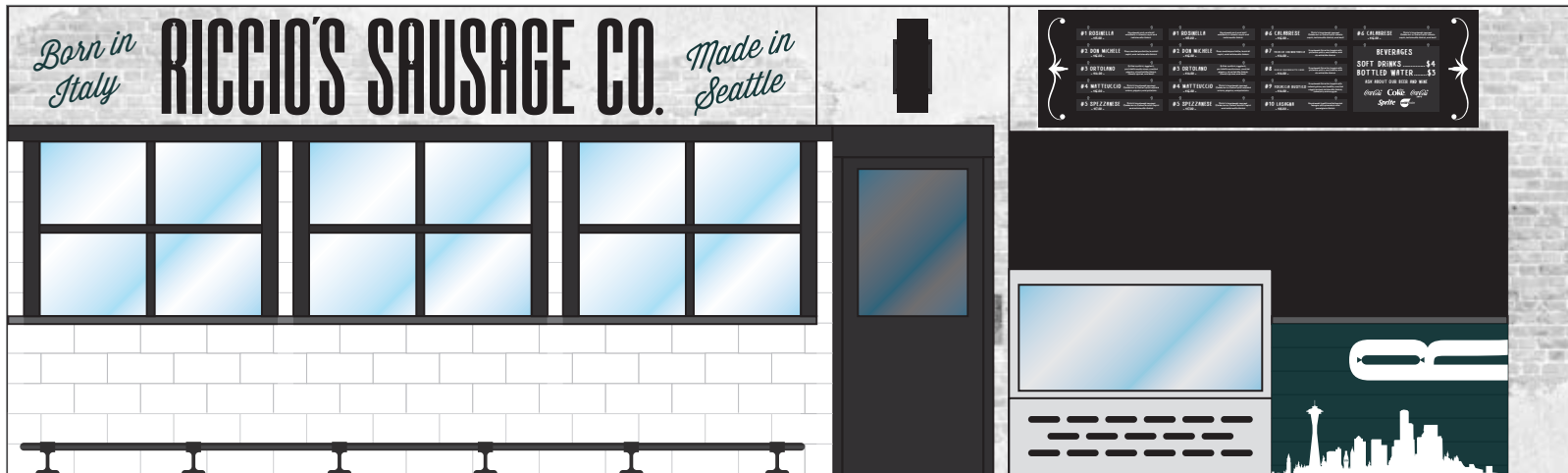
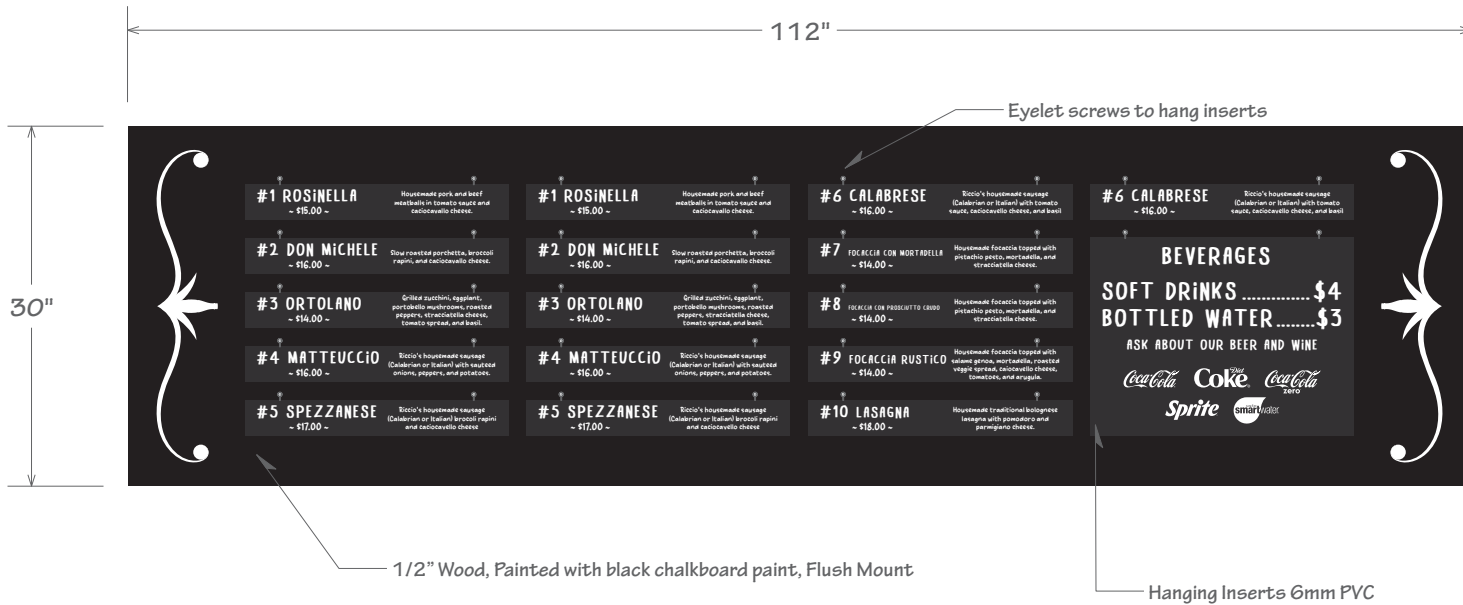
Mounting Method:

Will Call

■ "Black"
Matthews Paint
N923SP

■ 1/2" Thick
Non-Glare
Acrylic

2" Stud Mount



Proposed Signage

Job # 223635 **ITEM 1** Dimensional Menu | Qty: x1 | Single-Sided

FOR APPROVAL

Color Specifications

Material Specifications

Mounting Method:

Will Call

Black Chalkboard Paint

1/2" Thick Wood

6mm Thick PVC (Sintra)

2" Stud Mount



Salt Lake, UT | Seattle, WA
801.748.4750
sales@idsignco.com

Client
Swire Coca-Cola Bellevue
Washington

Contact
Chelsea Branom

Date	Revision	Drawn By
01.21.26	New Order	BRW
02.09.26	DC	BRW
02.11.26	DC	BRW
02.19.26	DC	BRW
03.04.26	DC	BRW

Approval: _____

Date: _____

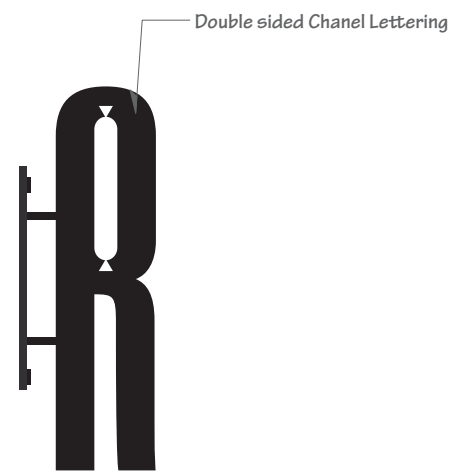
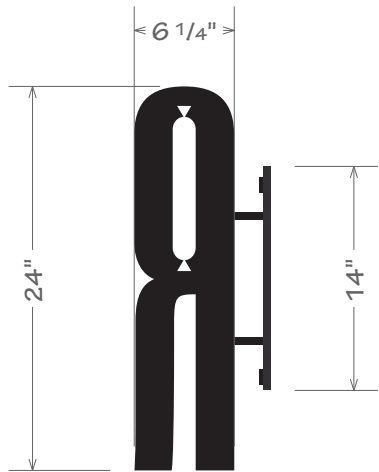
© 2025
Identity Signs

All designs represented are the sole property of identity signs, and may not be reproduced in part or whole without written permission from Identity Signs.

Sales Person
Nick Bruno

Project Manager
Nick Bruno

Designer
Brandon Williams



Client
Swire Coca-Cola Bellevue
Washington

Contact
Chelsea Branom

Date | Revision | Drawn By
01.21.26 | New Order | BRW
02.09.26 | DC | BRW
02.11.26 | DC | BRW
02.19.26 | DC | BRW
03.04.26 | DC | BRW

Approval: _____

Date: _____

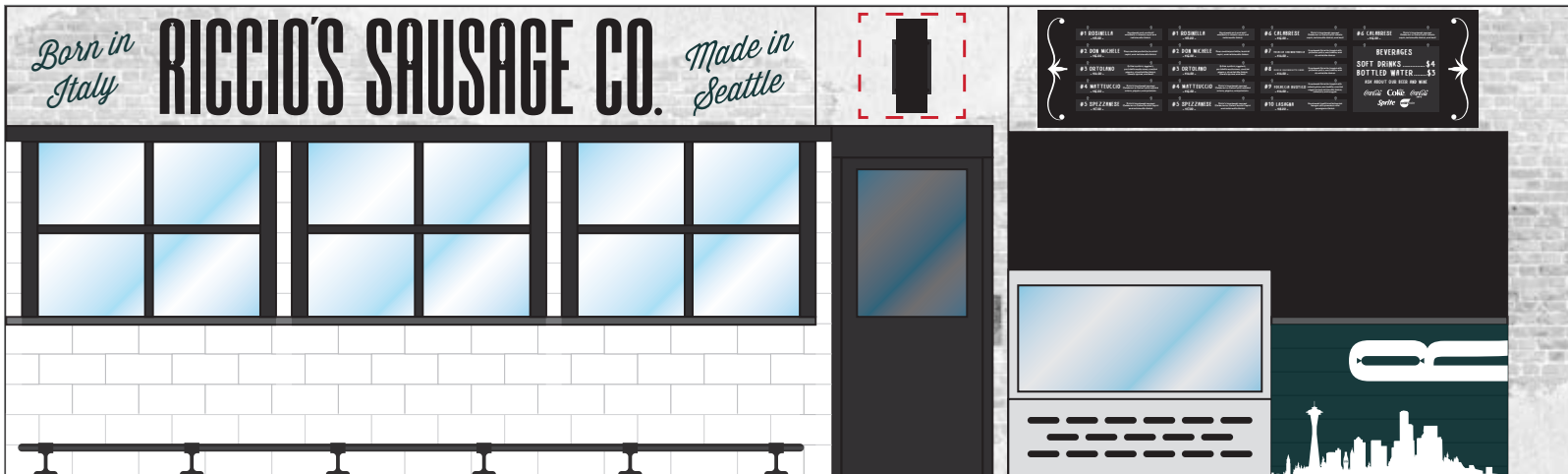
© 2025
Identity Signs

All designs represented are the sole property of identity signs, and may not be reproduced in part or whole without written permission from Identity Signs.

Sales Person
Nick Bruno

Project Manager
Nick Bruno

Designer
Brandon Williams



Proposed Signage

Job # 223635 **ITEM 1** Blade Sign | Qty: x1 | Single-Sided

FOR APPROVAL

Color Specifications

“Black”
Matthews Paint
N923SP

Material Specifications



Face & Backs: Black
Backs: .063" Alum.
Marquee: Bulb or Rope
Marquee Color: Warm or Bright White

Mounting Type: Flush
Lead Location: Center, Top, or Bottom

Mounting Method:

2" Stud Mount

Will Call

26 3/8"

19 9/16"

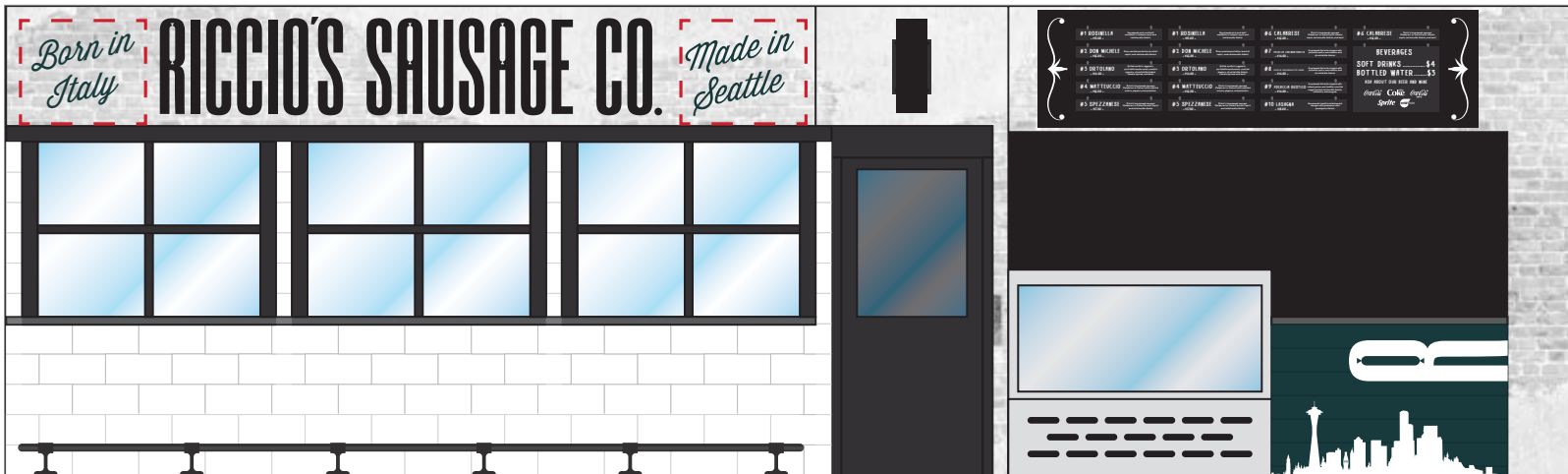
Born in Italy

27 11/16"

21 3/4"

Made in Seattle

.25" Acrylic Painted to Match
Flush Mount



Proposed Signage



Salt Lake, UT | Seattle, WA
801.748.4750
sales@idsignco.com

Client
Swire Coca-Cola Bellevue
Washington

Contact
Chelsea Branom

Date | Revision | Drawn By
01.21.26 | New Order | BRW
02.09.26 | DC | BRW
02.11.26 | DC | BRW
02.19.26 | DC | BRW
03.04.26 | DC | BRW

Approval: _____

Date: _____

© 2025
Identity Signs

All designs represented are the sole property of identity signs, and may not be reproduced in part or whole without written permission from Identity Signs.

Sales Person
Nick Bruno

Project Manager
Nick Bruno

Designer
Brandon Williams

Job # 223635 **ITEM 1** Blade Sign | Qty: x1 | Single-Sided

FOR APPROVAL

Color Specifications

Material Specifications

Mounting Method:

Will Call

Paint TBD

1/4" Thick
Non-Glare
Acrylic

2" Stud Mount

Client
Swire Coca-Cola Bellevue
Washington

Contact
Chelsea Branom

Date | Revision | Drawn By
01.21.26 | New Order | BRW
02.09.26 | DC | BRW
02.11.26 | DC | BRW
02.19.26 | DC | BRW
03.04.26 | DC | BRW

Approval: _____

Date: _____

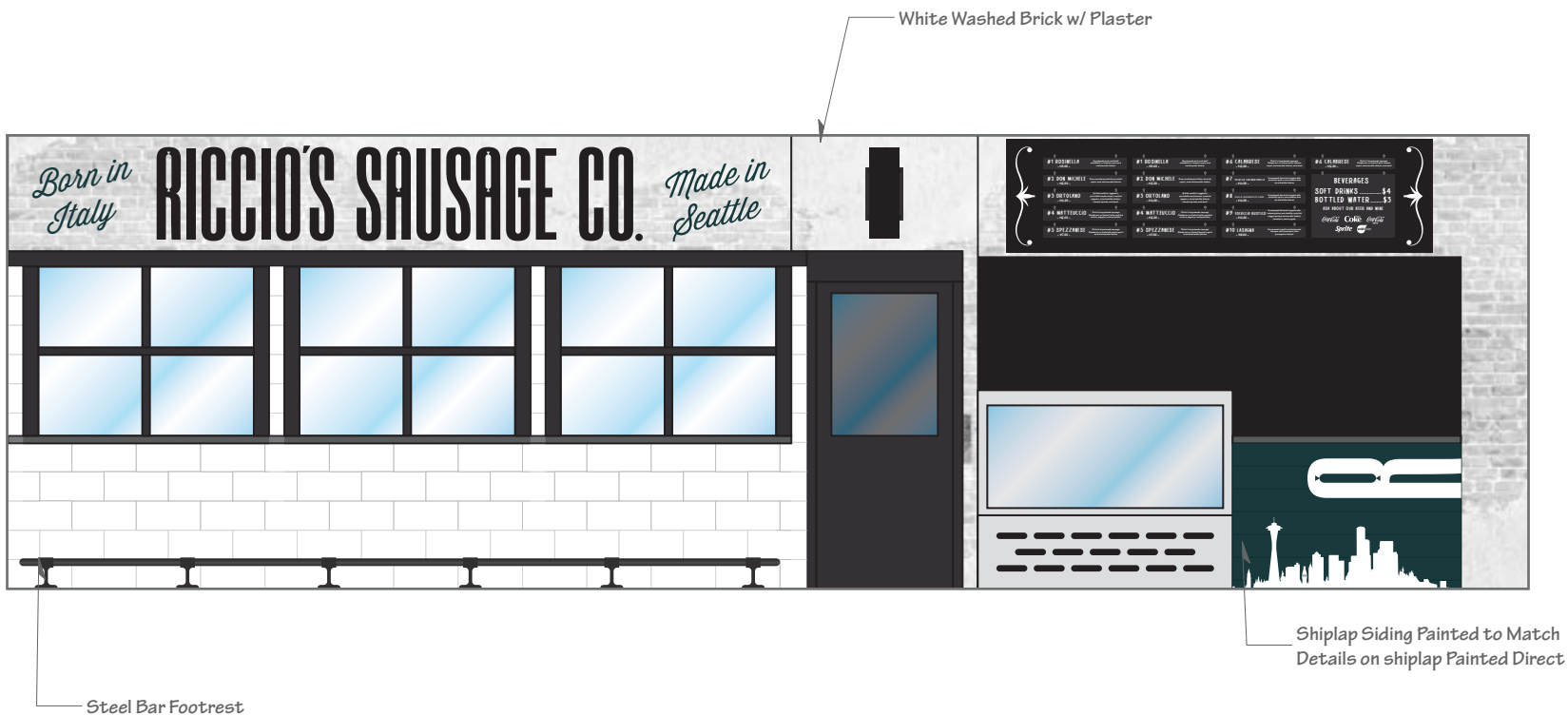
© 2025
Identity Signs

All designs represented are the sole property of identity signs, and may not be reproduced in part or whole without written permission from Identity Signs.

Sales Person
Nick Bruno

Project Manager
Nick Bruno

Designer
Brandon Williams



Job # 223635 **ITEM 1** Other Details | Qty: x1 | Single-Sided

FOR APPROVAL

Color Specifications

Material Specifications

Mounting Method:

Will Call

2" Stud Mount

SITE PLAN

Riccio's Sausage Company

1511 Pike Place

Athenian
1517 Pike Place

Pure Food Fish
1515 Pike Place

1511 Pike Place

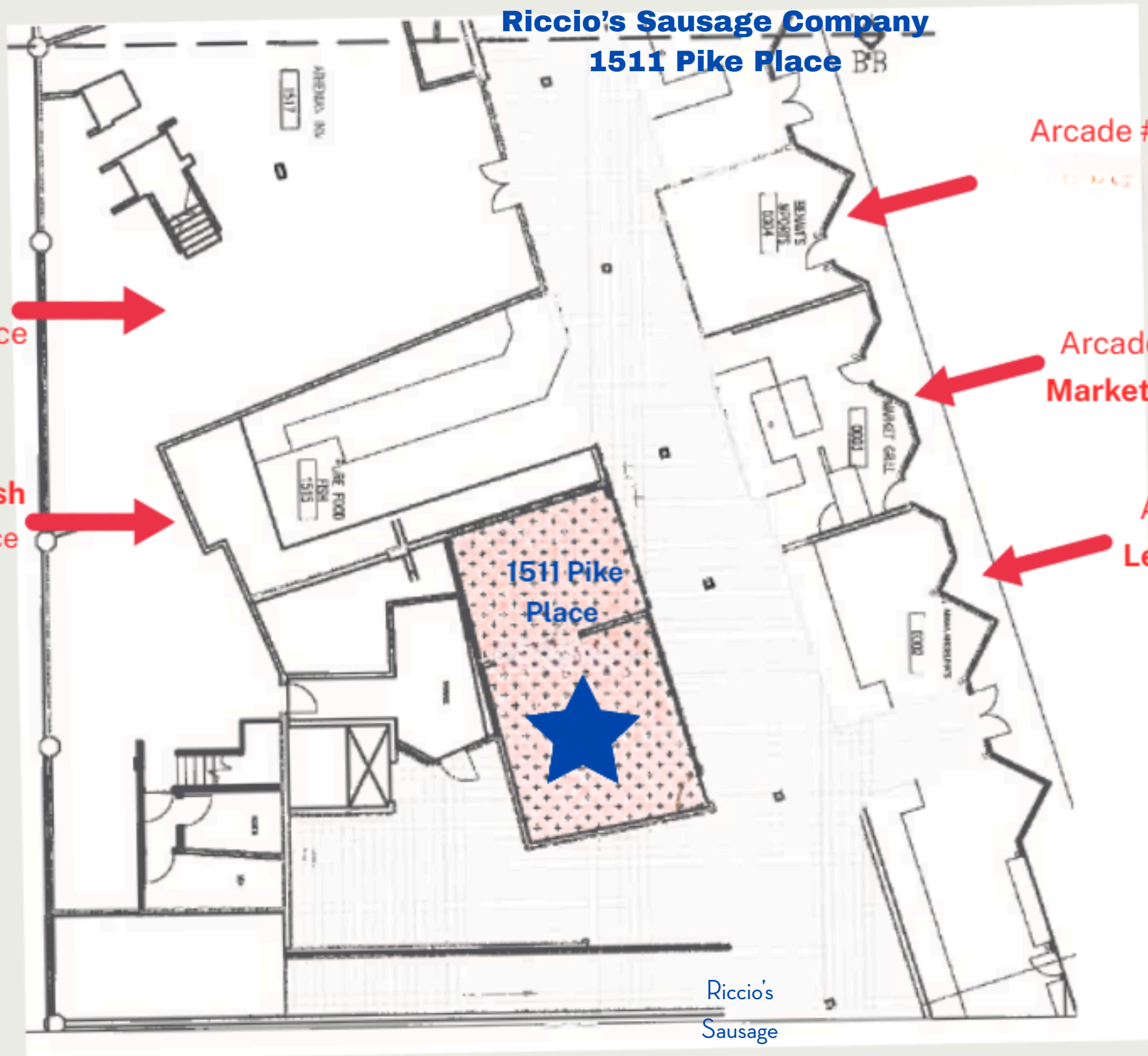
Arcade #4

Bite Society
Market Grill

Arcade #2
Lee's Family Produce

PIKE PLACE

Riccio's
Sausage
Company



South View



North View



Storefront (East View)

