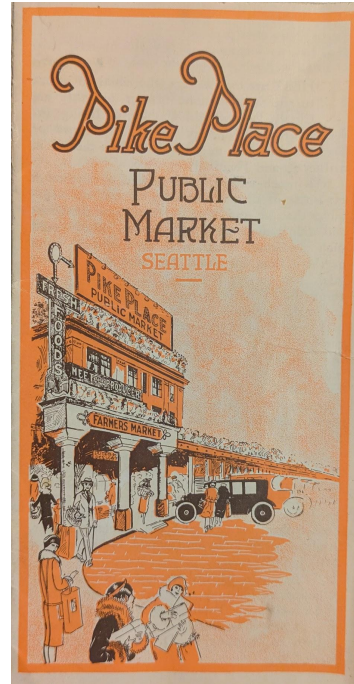


A short history of Pike Place

A public street like no other



January 8, 2026



What makes Seattle's Public Market
so unique?





Market square evolved to shed, open stalls and surrounding commercial



Before there was a Pike Place

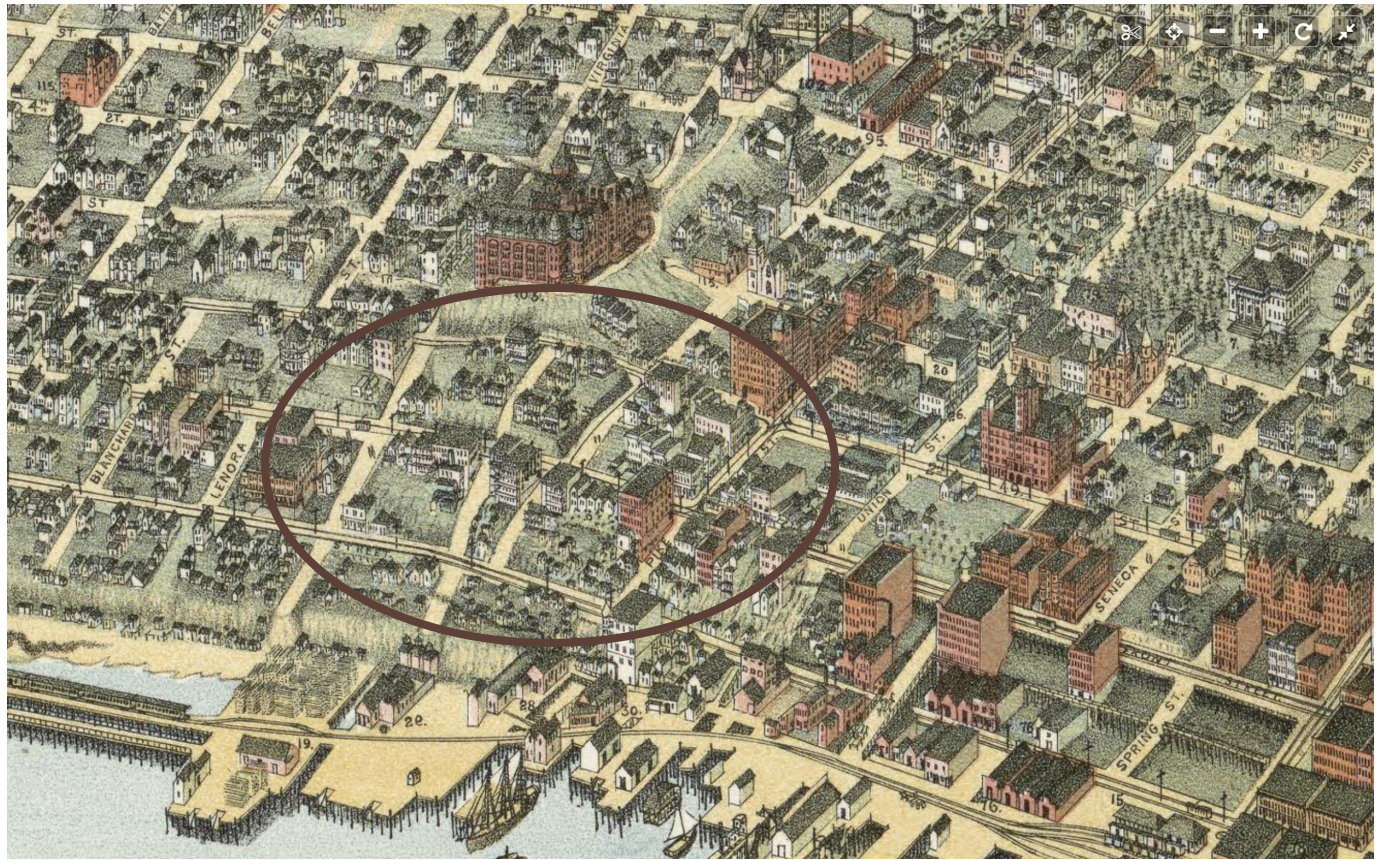




Seattle 1890



Detail -
North
Seattle
business
after the
Great Fire



1900- 1920 The Progressive Era

Social movements

Anti-Trust

Urban / Rural contrast

Public Investment

Health and Sanitation

Immigration

The map illustrates the expansion of Seattle over time. Key features include:

- Water Bodies:** Puget Sound to the west, Elliott Bay to the north, and Lake Washington to the east.
- Streets and Landmarks:** Major streets shown include W. 85TH ST., N. 85TH ST., E. 65TH ST., E. 60TH ST., E. 55TH ST., E. 50TH ST., E. 45TH ST., E. 40TH ST., E. 35TH ST., E. 30TH ST., E. 25TH ST., E. 20TH ST., E. 15TH ST., E. 10TH ST., E. 5TH ST., E. 1ST, W. ROXBURY ST., CAMBRIDGE ST., JUNIPER ST., RYAN ST., LEO ST., ST. ANNE'S, COLUMBIA, HANFORD ST., ATLANTIC ST., YESLER'S MILL RD., ALKI POINT CAMP, WEST SEATTLE, SOUTH PARK, GEORGETOWN, SEATTLE SNOWALMIE, SANDOVER SOUTH, FILLINGIM, RANDOLPH, and AVE S.
- Dates and Events:** 1869 (Incorporated), 1883 (Filled 1902), 1907 (West Seattle, South Park, Rainier Beach), 1910 (Laurelhurst, Georgetown), 1916 (Locks, Filled).
- Legend:**
 - Solid line: CITY OF SEATTLE — PRESENT LIMITS
 - Dashed line: ORIGINAL INCORPORATION & ANNEXATIONS
 - Thick solid line: SANITARY SURVEY W.P.A. PROJECT NO. 5638
 - Thin solid line: N.A. CARLE CITY ENGINEER 1938
 - Thin dashed line: E. FRENCH CHASE SANITARY ENG'R CITY OF SEATTLE

Waterfront railways and new tunnel

Cedar River water/ City Light Dam

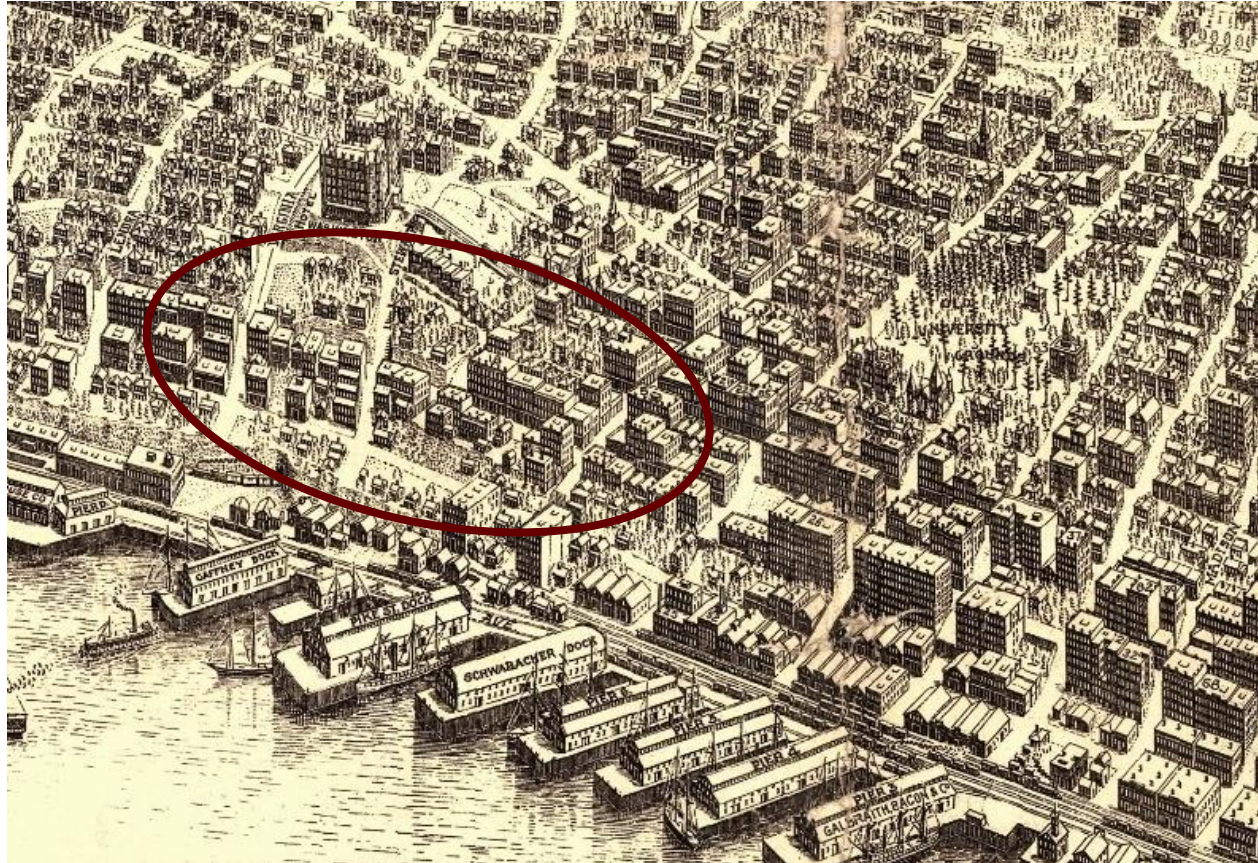
Tidelands filled - Harbor Island
Island

AYP / Olmstead developments

1905

North limit of
downtown still
blocked by Denny
Hill

First Avenue on
crest of bluff
above Western





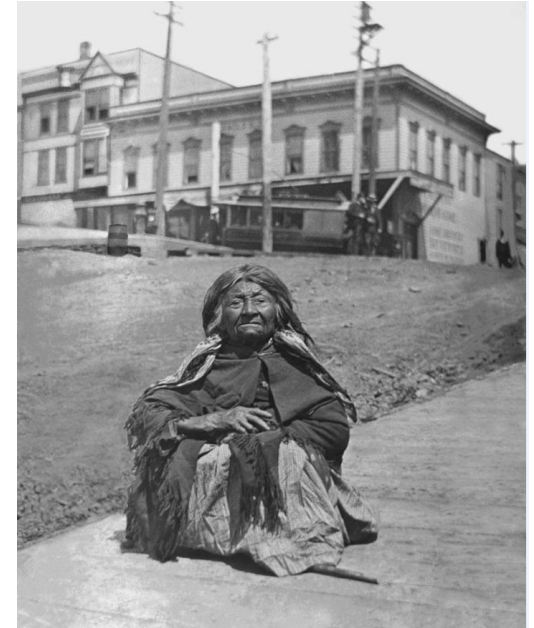
York Hotel -
@ 1900



Front Street (1st Ave) and Pike St view to east
Hotel York at current location Corner Market



Pythian Building 1st and Pike circa 1900
(now Economy Market) view to SW



Kikusoblu on 1st and
Pike St view NE

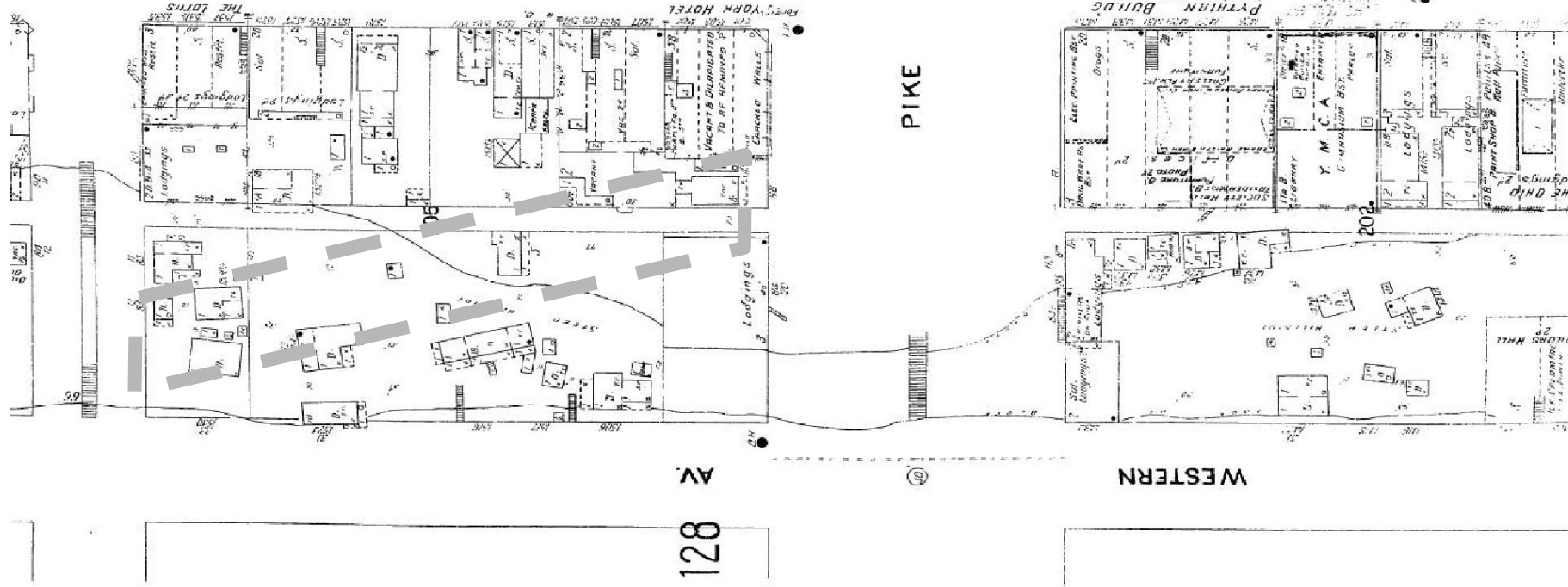




Creating Pike Place



1905 Sanborn Plat - prior to platting of Pike Place showing approx future R.O.W.



This is a detailed historical map of a city block, likely from the early 20th century. The map shows a grid of streets including Stewart St, Pine St, and Pike St. Various buildings are labeled, such as "THE 10 SUMMIT", "HOTEL LOTUS", "HOTEL LELAND", and "PYTHIAN BLDG". A dashed line indicates the "PIKE LINE OF PL." (Pike Line of Plank). The map also shows a "TUNNEL" and a "WALL". The map is oriented with Stewart St running vertically and Pine St running horizontally. The map is a sepia-toned print with black ink.

1905-

Western Avenue
ramp
Railroad Tunnel
below Pike Place
Bulk head



Times-Bulletin. Aug.
16, 1907. p. 15

BACK TO THE SIMPLE LIFE!



TO MARKET, TO MARKET,
(IN SPITE OF THE HOG)

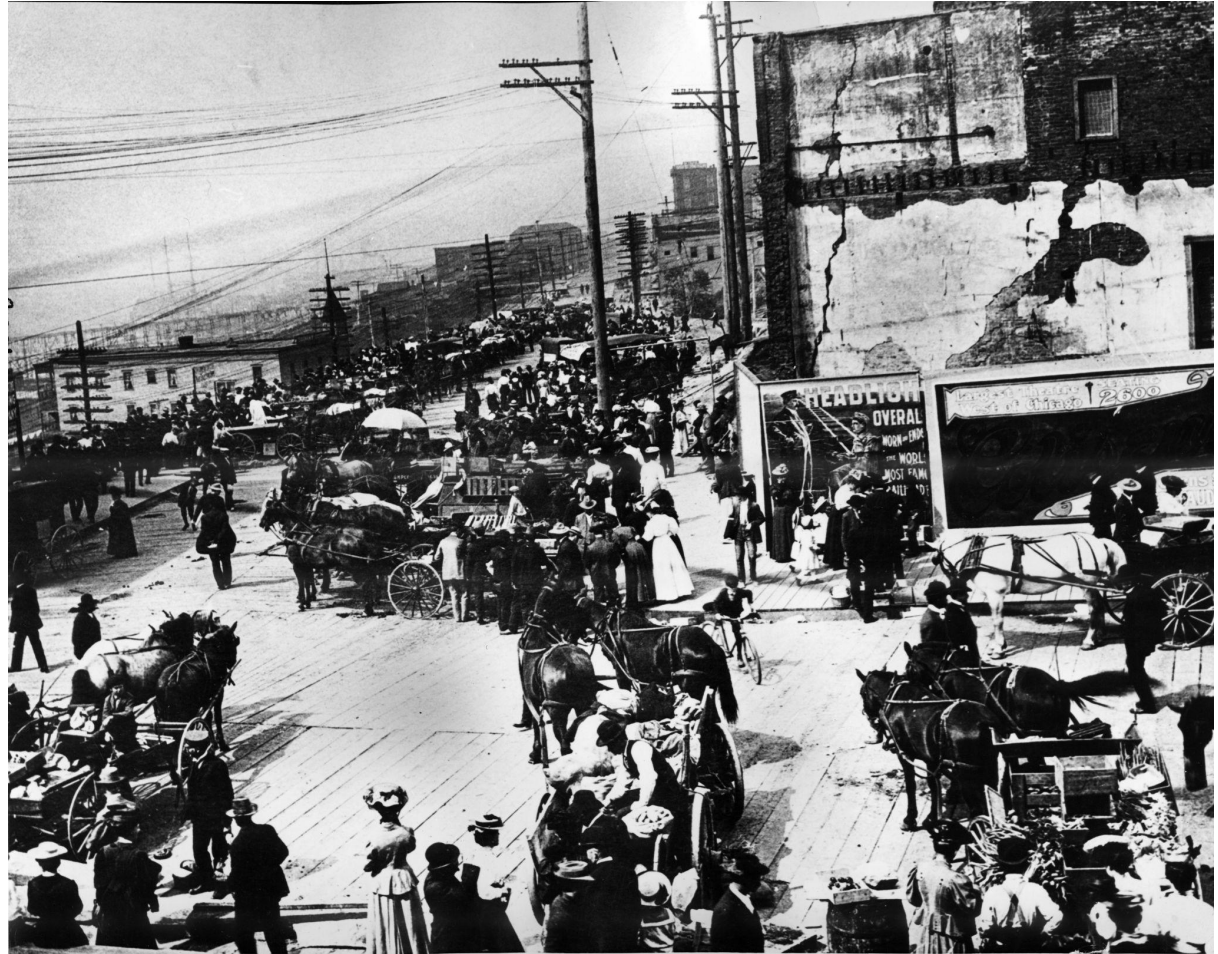
Early Market
circa 1907-8

North portion
Pike Place
unpaved street



1907
1st and Pike

South Portion of
Pike Place

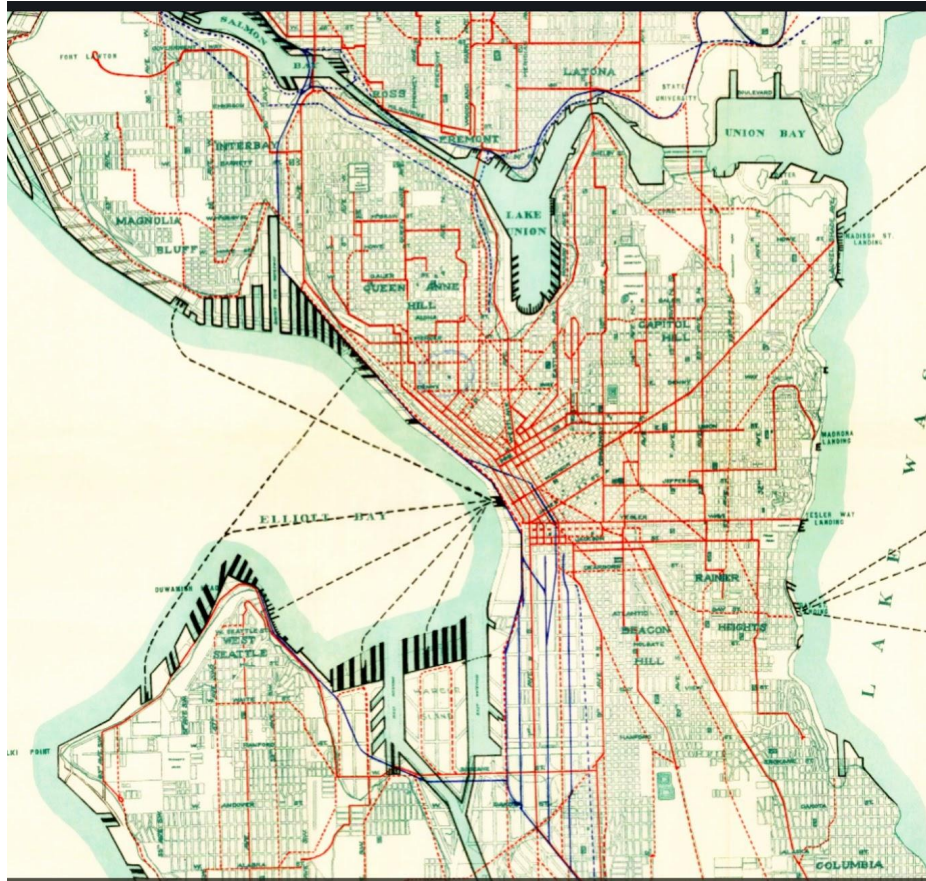


1908
1st and Pike

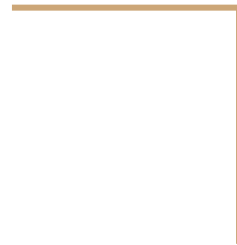
Sidewalk and street
capacity has been
maxed out



The crossroads of Seattle in 1910



Demand Congestion Expansion



City Regulations

Permitted

Sanitation

Weights and Measures

Space assignment

Collection of Rent

Inspections off site.



City builds
Farmer Shed to
cover sidewalk
on west side of
Pike Place



1910's

Morning setup at
Farmer Shed
(north arcade)

5am-Noon
Mon-Fri

5am-6pm
Saturday

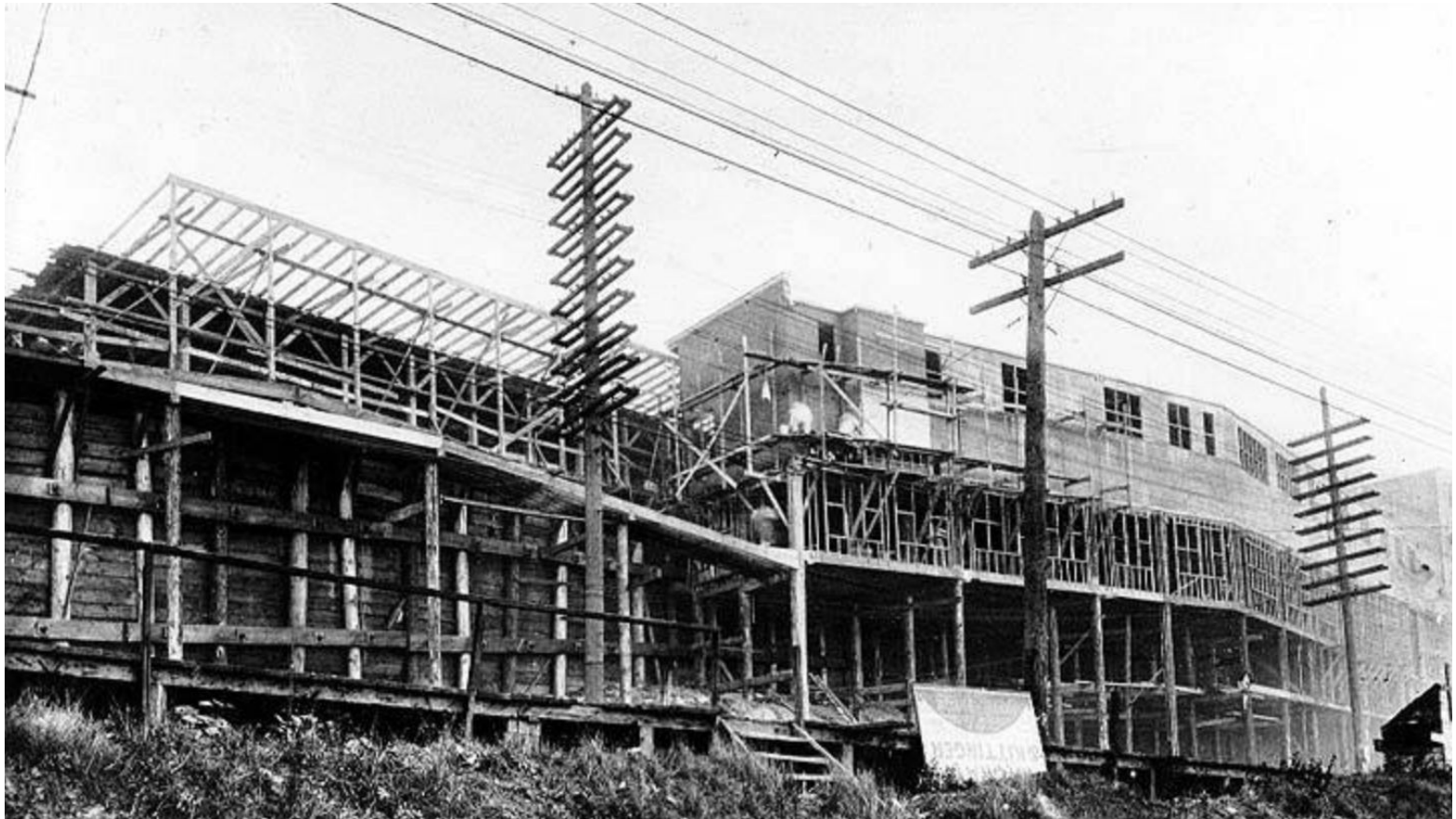


The daily theater
of the Market -

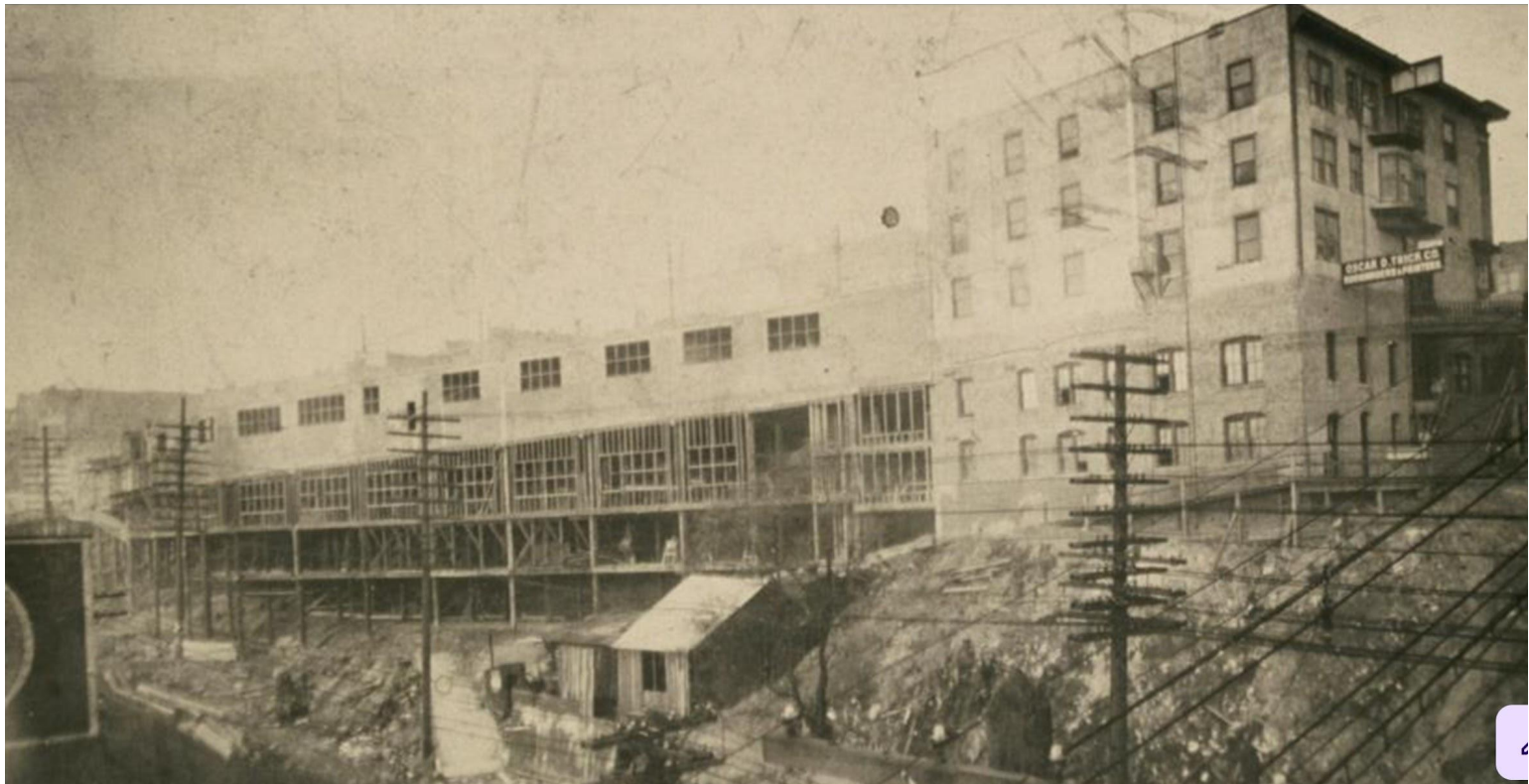
Front door
Center stage
Back of House

all the same



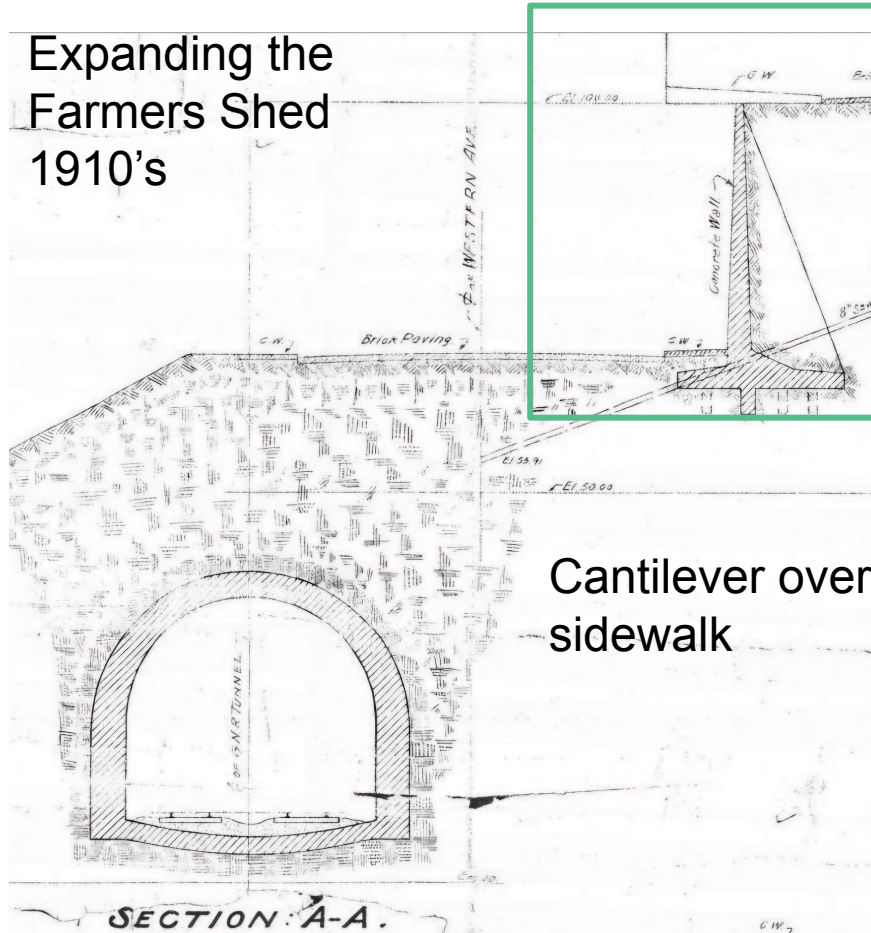


Scaffolding on Pike Place for new Farmer Shed / market expansion

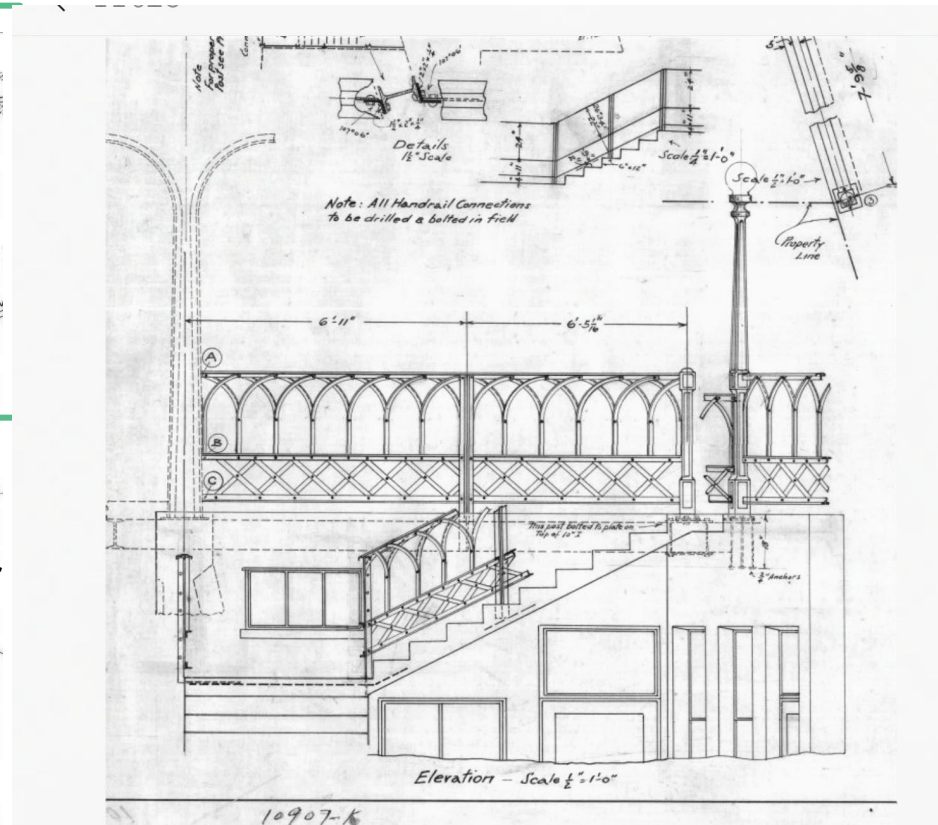


Regrading of Pike Place opens Goodwin property for development
above rWestern Avenue

Expanding the Farmers Shed 1910's



Cantilever over
sidewalk



New Stairs to Western

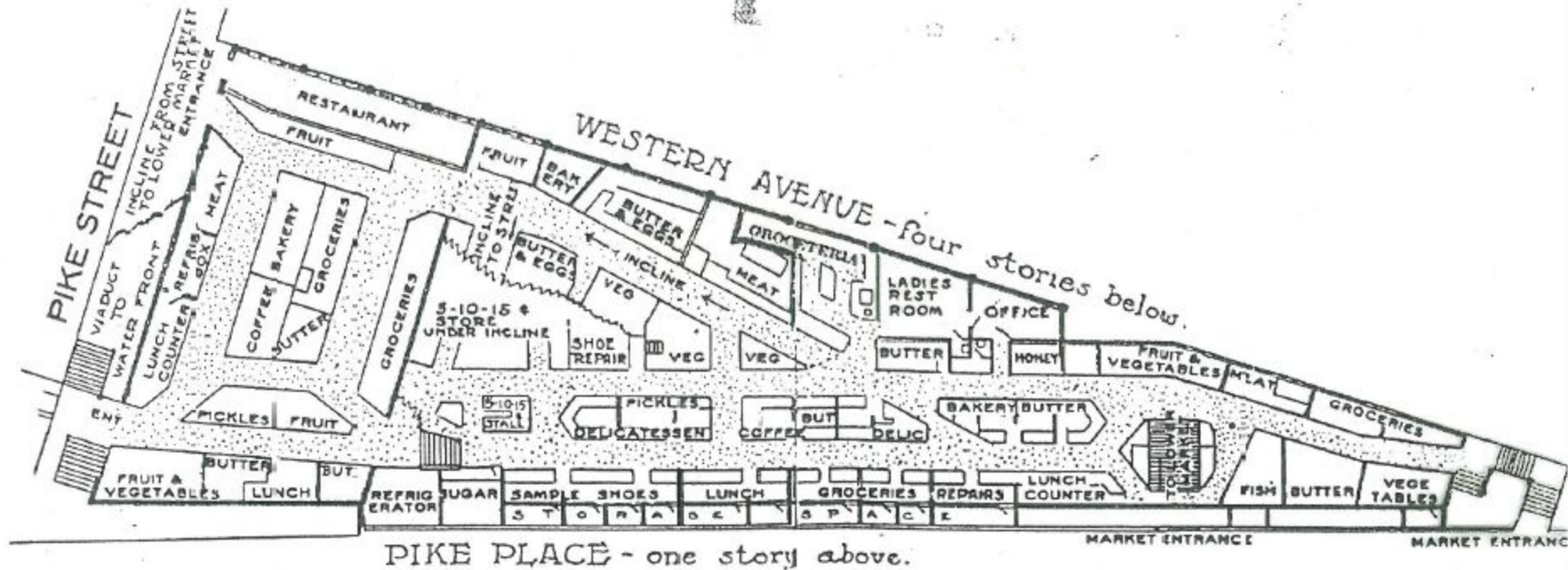


circa 1915- widening of market arcade over new concrete retaining wall on Western Avenue

1912

West side Pike
Place
sidewalks
covered for
added farmer
stalls

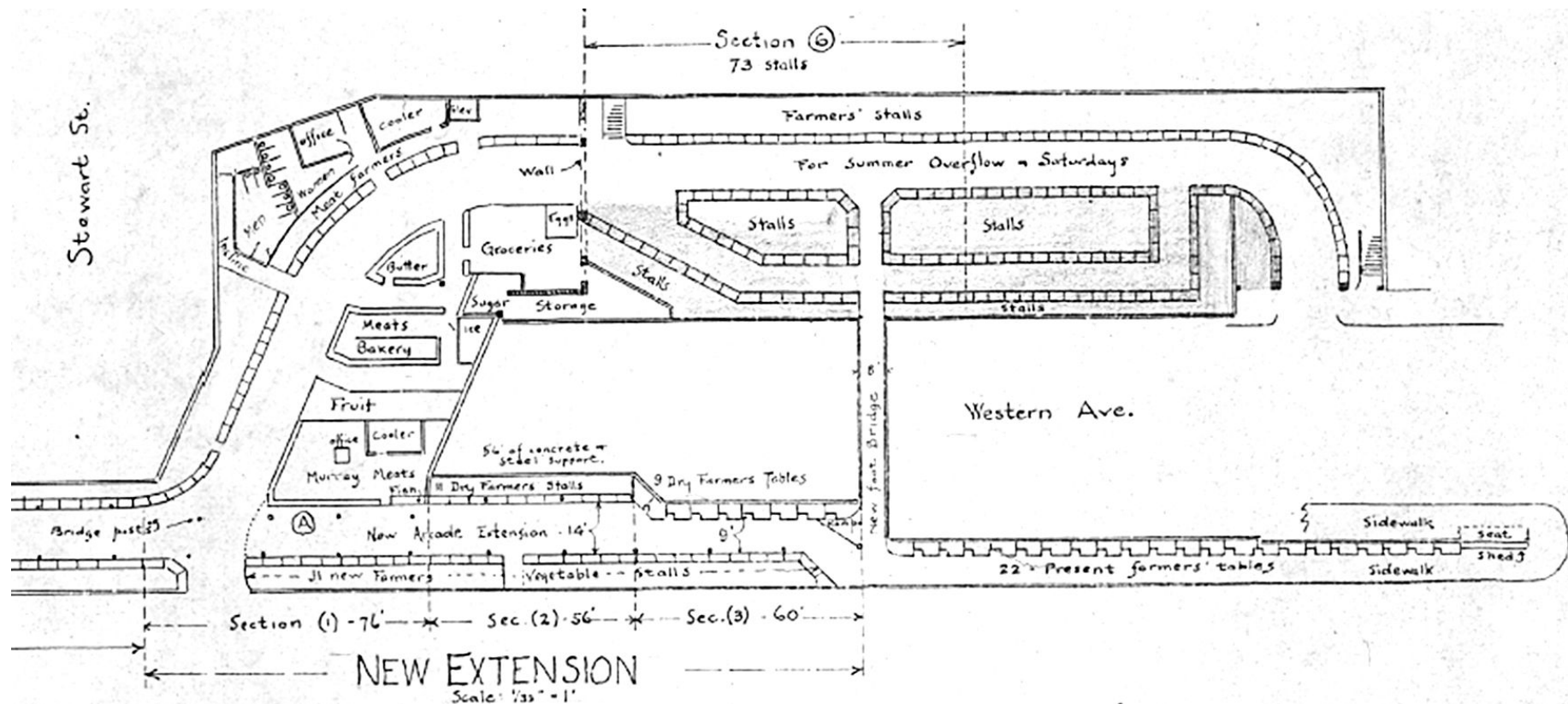




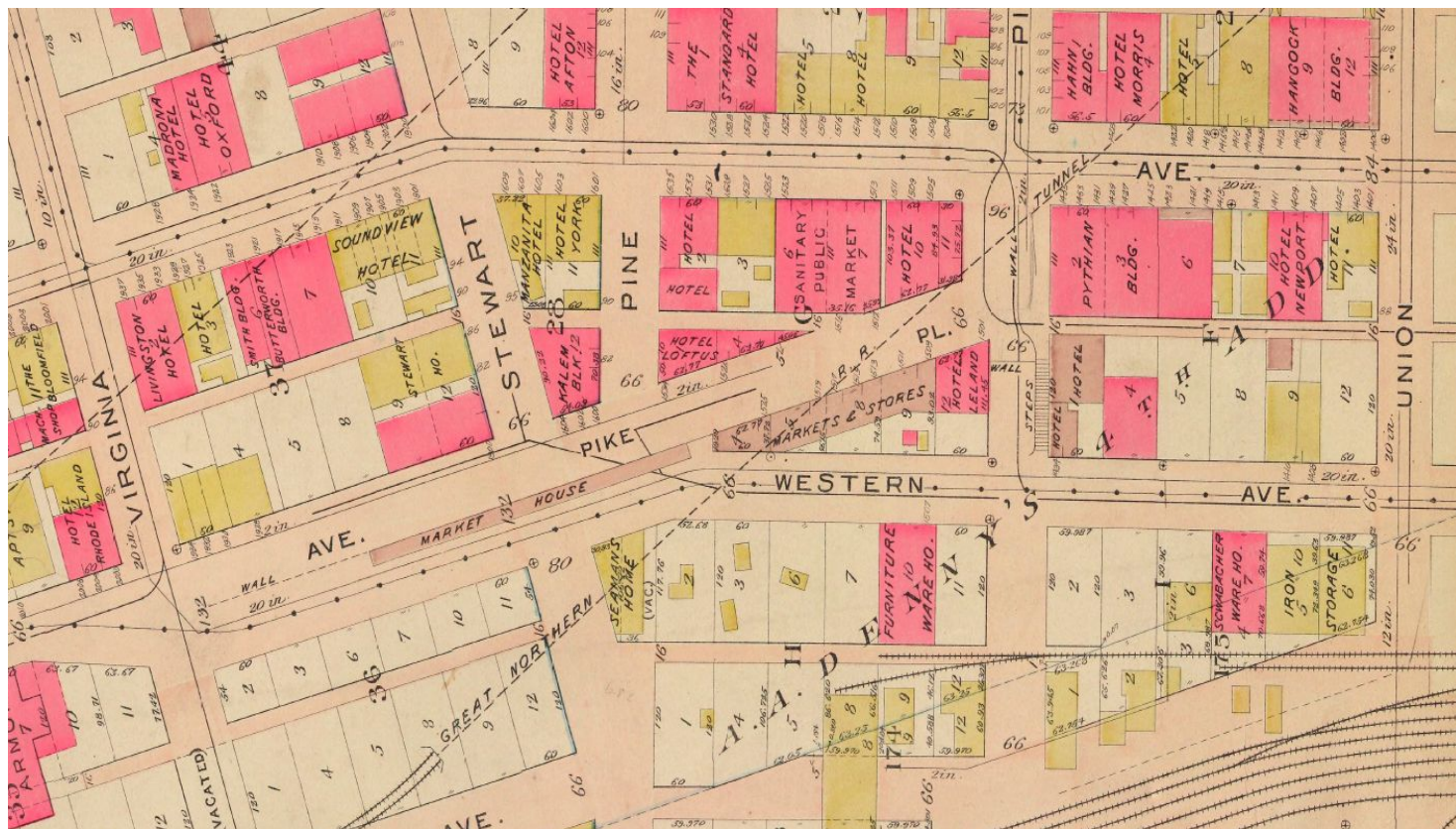
Plan of lower market floor of Pike Place Public Market. Wide aisles allow easy passage at all times and convenient inclines make all parts of the market accessible

The partition of sidewalk day stalls for GG commercial stalls Lower floor of fairley Addition as commercial space - 1920's

Stewart St.

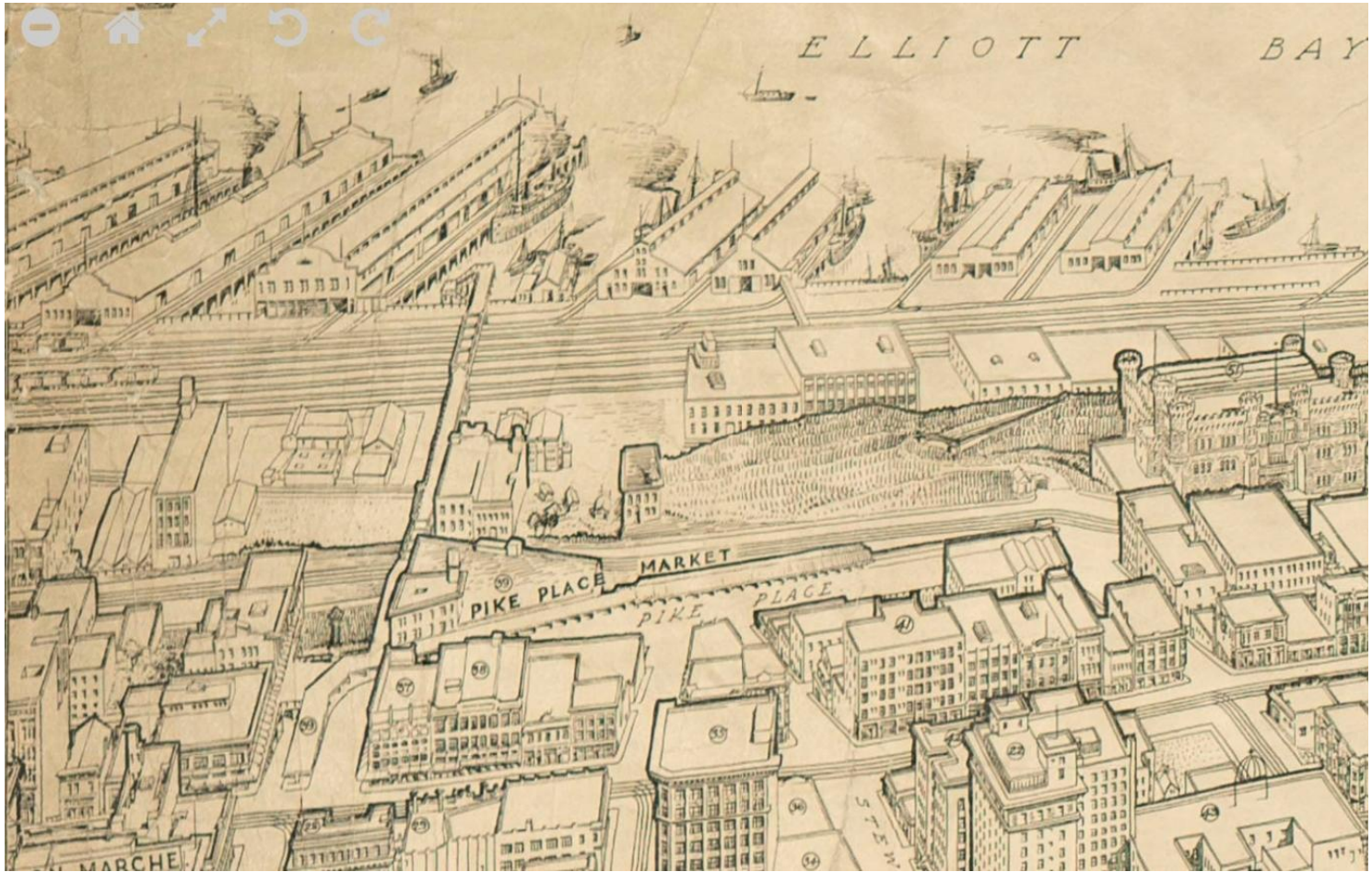


Farmers
Market is
core of
growing
retail
“public”
market
district



1916-18

Market as
part of
City Center



1920's era

Open Plaza above comfort station

Signs for multiple Public Markets

Canopies at sidewalk

(note-Economy Arcade not yet built)



1920's





Pike Place Market- Looking south on Pike Pl. towards Pike St.

Street and Sew. Dept. 7/21-1906

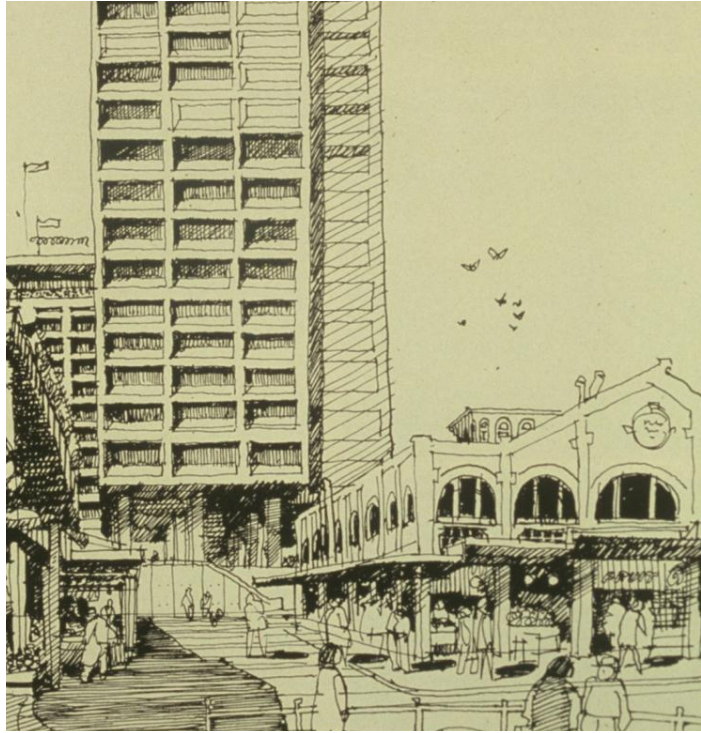
1930's

Replacing the
wood shoring
and future
replacement of
farmers arcade -
2nd section



1940's-50's

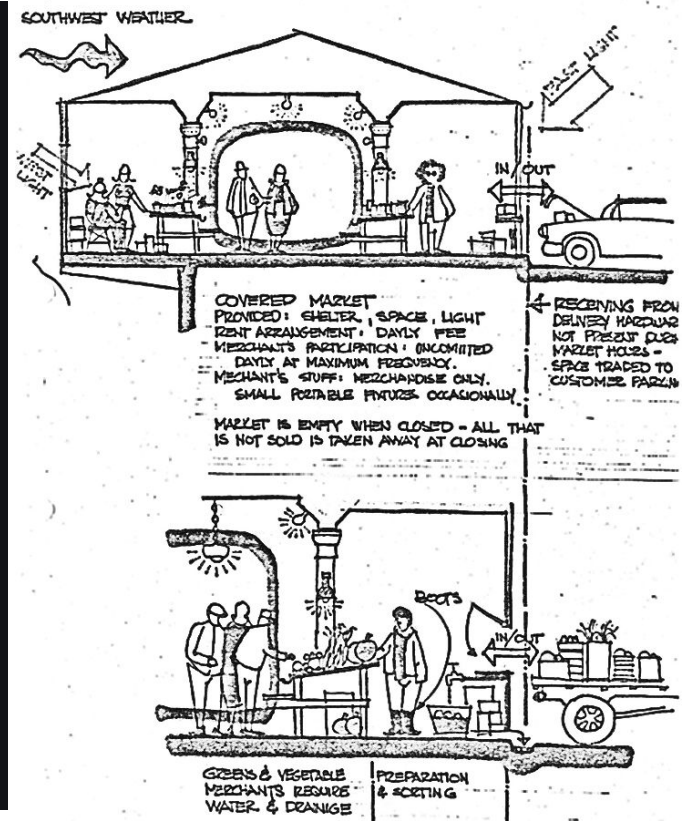
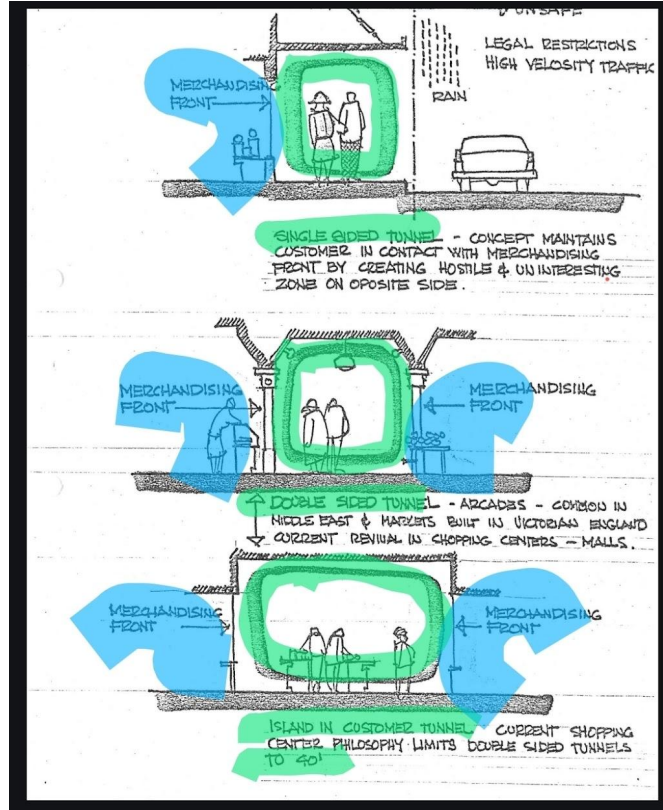




1960's Urban Renewal Proposals for Pedestrian Mall

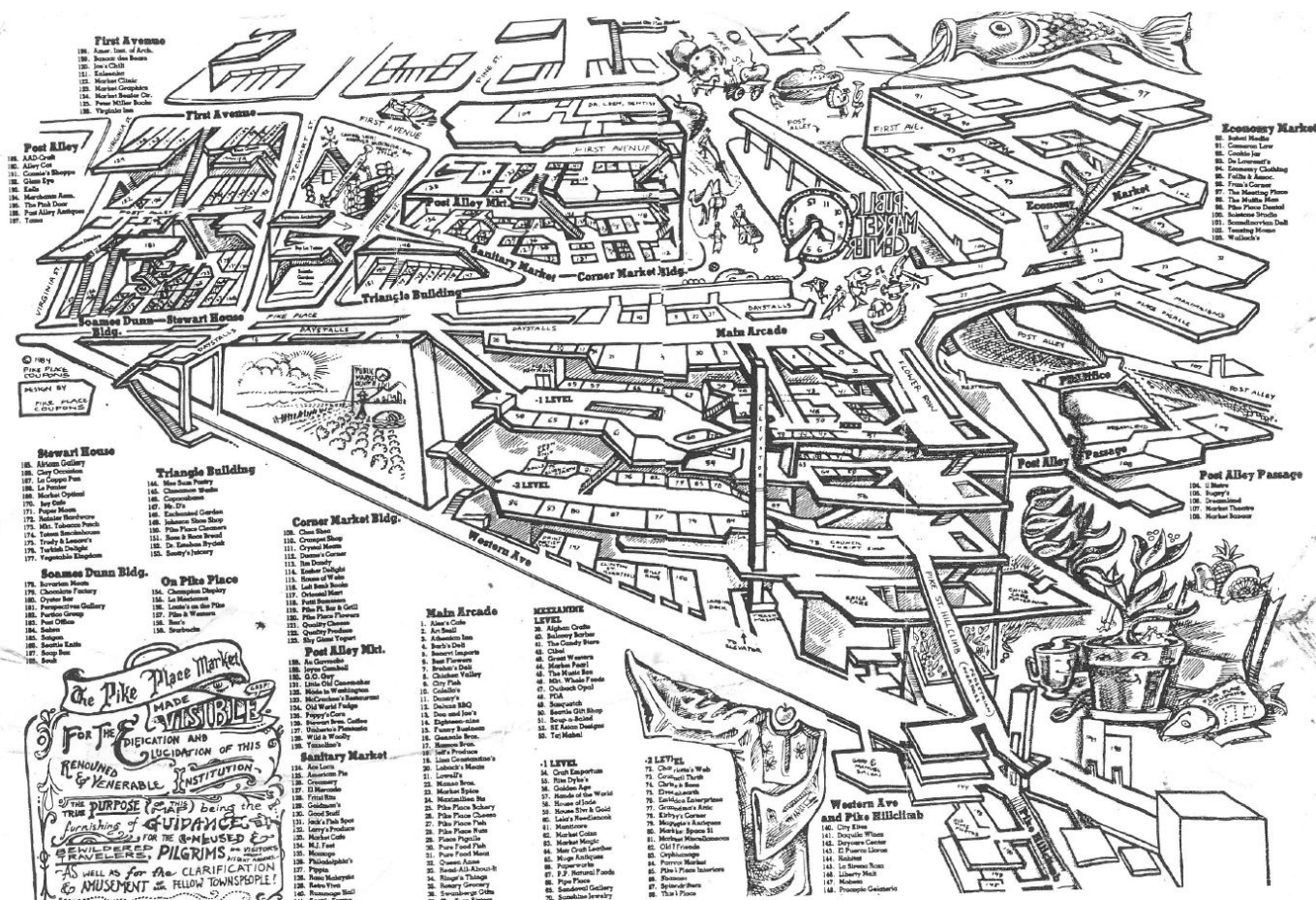
1970's Historic
District
established

Urban analysis
of dynamic
functions of
the
marketplace



Historic
District
renovated and
reenergized

Public Market
functions
stretched over
8 vertical
levels



Management today for an unique street

1. Public stewardship continues
2. District Guidelines and boundaries
3. Delegated authority / management agreements/ covenants
4. Pedestrian zones
5. Multi-functional right of way by



END



Copyright © 1980 Clyde Keller
<http://www.clydekeller.com>

Resources:

Initial ordinance establishing the Farmers Market on Pike Place

<https://www.seattle.gov/cityarchives/exhibits-and-education/online-exhibits/pike-place-market-centennial>

