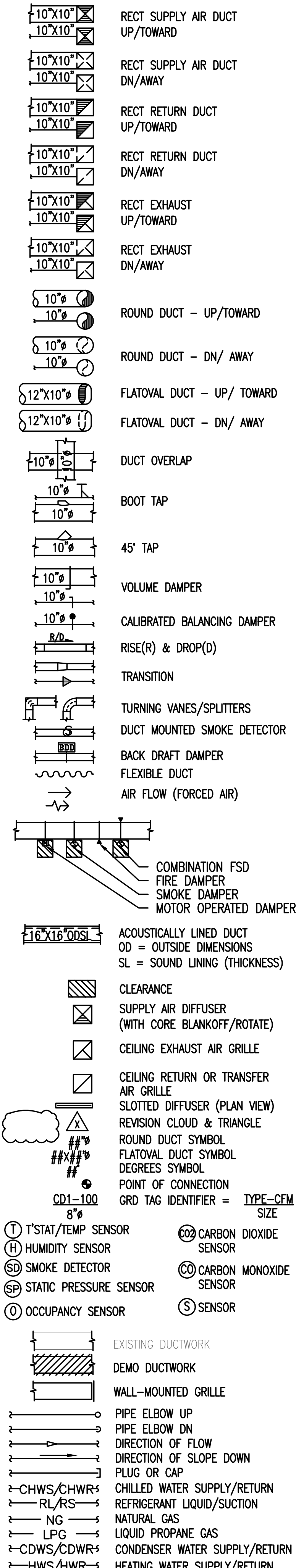


## MECHANICAL ABBREVIATIONS

A	AMPS	IBC	INTERNATIONAL BUILDING CODE
AC	AIR CONDITIONING	ICW	INDUSTRIAL COLD WATER
ACH	AIR CHANGES PER HOUR	ID	INSIDE DIAMETER/DIMENSION
ACT	ACOUSTICAL CEILING TILE	IE	INVERT ELEVATION
AD	ACCESS DOOR	IEER	INTEGRATED ENERGY EFFICIENCY RATIO
ADD'L	ADDITIONAL	IMC	INTERNATIONAL MECHANICAL CODE
AFF	ABOVE FINISHED FLOOR	IN	INCHES
AFG	ABOVE FINISHED GRADE	IN WG	INCHES WATER GAUGE
AHU	AIR HANDLING UNIT	IPLV	INTEGRATED PART LOAD VALUE
ALUM	ALUMINUM	KW	KILOWATTS
AMP/AMPS	AMPERAGE	LAT	LEAVING AIR TEMPERATURE
AP	ACCESS PANEL	LB/LBS	POUND/POUNDS
ARCH	ARCHITECT	LF/LIN FT	LINEAL FOOT/FEET
BC	BEADED COLLAR	LPG	LIQUID PROPANE GAS
BDD	BACKDRAFT DAMPER	LPS	LOW PRESSURE STEAM
BF	BELOW FLOOR	LVG	LEAVING
BHP	BRAKE HORSEPOWER	LWA	SOUND POWER RATING LEVEL (IN DB)
BLDG	BUILDING	LWG	LOW WALL GRILLE
BOD	BOTTOM OF DUCT	LWT	LEAVING WATER TEMPERATURE
BOP	BOTTOM OF PIPE	MAX	MAXIMUM
BOT	BOTTOM	MAU	MAKE UP AIR UNIT
BS	BIRD SCREEN / BLACK STEEL	MBH	1000 BRITISH THERMAL UNITS/HOUR
BTU	BRITISH THERMAL UNIT	MCA	MINIMUM CIRCUIT AMPACITY
BTUH	BRITISH THERMAL UNITS PER HOUR	MD	MOTORIZED DAMPER
CAP	CAPACITY	MFR	MANUFACTURER
CBD	CALIBRATED BALANCING DAMPER	MISC	MISCELLANEOUS
CC	CONTROLS CONTRACTOR	MIN	MINIMUM/MINUTE
CD	CEILING DIFFUSER/CONDENSATE DRAIN	MPS	MEDIUM PRESSURE STEAM
CDWR	CONDENSER WATER RETURN	MT	MOUNT
CDWS	CONDENSER WATER SUPPLY	MTD	MOUNTED
CFM	CUBIC FEET PER MINUTE	MUW	MAKE-UP WATER
CHWR	CHILLED WATER RETURN	NA	NOT APPLICABLE
CHWS	CHILLED WATER SUPPLY	NC	NORMALLY CLOSED/NOISE CRITERIA
CLG	CEILING	NG/NGAS	NATURAL GAS
COL	COLUMN	NIC	NOT IN CONTRACT
CONC	CONCRETE	NO	NORMALLY OPEN/NUMBER
COND	CONDENSATE	NPW	NON-POTABLE WATER
CONN	CONNECT/CONNECTED/CONNECTION	N-R	NON-RESIDENTIAL
CONT	CONTINUOUS/CONTINUATION	OA/OSA	OUTSIDE AIR
CONTR	CONTRACTOR	OBD	OPPOSED BLADE DAMPER
COORD	COORDINATE	OD	OUTSIDE DIAMETER/DIMENSION
COP	COEFFICIENT OF PERFORMANCE	PCF	POUNDS PER CUBIC FOOT
CT	COOLING TOWER	PD	PRESSURE DROP
CU	CUBIC/CONDENSER UNIT	PH	PHASE
CW	DOMESTIC COLD WATER/CONDENSER WATER	POC	POINT OF CONNECTION
DB	DUCTBOARD/DRY BULB/DECIBEL	P/P/PRESS	PRESSURE
DDC	DIRECT DIGITAL CONTROL	PSI	POUNDS PER SQUARE INCH
DEFL	DEFLECTION	PSIG	POUNDS PER SQUARE INCH GAUGE
DEG	DEGREE/DEGREES	QTY	QUANTITY
DIA	DIAMETER	R	RETURN GRILLE/RELOCATED/RETURN
DMPR	DAMPEN	RA	RETURN AIR
DN	DOWN	RD/RND	ROUND
DOAS	DEDICATED OUTSIDE AIR SYSTEM	REF	REFERENCE
DWG	DRAWING	REQ	REQUIRED
EXH	EXHAUST	RESID	RESIDENTIAL
EA	EACH	RF	RELIEF
EAT	ENTERING AIR TEMPERATURE	RG	REFRIGERANT DISCHARGE GAS
EC	EGGCRATE GRILLE/END CAP/ELEC CONTRACTOR	RL	REFRIGERANT LIQUID
EER	ENERGY EFFICIENT RATING	RPM	REVOLUTIONS PER MINUTE
EF	EXHAUST FAN	RS	REFRIGERANT SUCTION
EFF	EFFICIENCY	S	SUPPLY
EL	ELEVATION	SA	SUPPLY AIR
ELEC/ELECT	ELECTRICAL/ELECTRIC	SAT	SATURATION/SUPPLY AIR TEMPERATURE
EMCS	ENERGY MANAGEMENT CONTROL SYSTEM	SD	SMOKE DETECTOR
ENT	ENTERING	S/D	SLIP & DRIVE CONNECTION
EQUIP	EQUIPMENT	S-C	SEATTLE CODE
ESP	EXTERNAL STATIC PRESSURE	SEER	SEASONAL ENERGY EFFICIENCY RATING
EWT	ENTERING WATER TEMPERATURE	SENS	SENSIBLE
EXIST/(E)	EXISTING	SL	SOUND LINING
EXH	EXHAUST	SM	SHEETMETAL
F	FAHRENHEIT	SPEC	SPECIFICATION
FAC	FIRE ALARM CONTRACTOR	SO	SCREENED OPENING
FD	FIRE DAMPER	SOG	SLAB ON GRADE
FDC	FIRE DEPARTMENT CONNECTION	SP	STATIC PRESSURE
FF	FINISHED FLOOR	SF	SQUARE FEET
FIC	FURNISHED AND INSTALLED BY CONTRACTOR	SS	STAINLESS STEEL
FIO	FURNISHED AND INSTALLED BY OWNER	STRUC	STRUCTURAL
FLA	FULL LOAD AMPS	TA	TRANSFER AIR
FLEX	FLEXIBLE	TEMP	TEMPERATURE/TEMPORARY
FLR	FLOOR	TBD	TO BE DETERMINED
FOB	FLAT ON BOTTOM	TOD	TOP OF DUCT
FOIC	FURNISHED BY OTHERS, INSTALLED BY CONTRACTOR	TOS	TOP OF STEEL/TOP OF SLAB
FOS	FLAT ON SIDE	TOT	TOTAL
FOT	FLAT ON TOP	TSP	TOTAL STATIC PRESSURE
FP	FIRE PROTECTION	TSTAT	THERMOSTAT
FPM	FEET PER MINUTE	TP	TYPICAL
FSD	FIRE/SMOKE DAMPER	UH	UNIT HEATER
FT	FOOT/FEET	UNO	UNLESS NOTED OTHERWISE
FUT	FUTURE	V	VOLT
FV	FACE VELOCITY	VD	VOLUME DAMPER
G	GRILLE	VEL	VELOCITY
GA	GAUGE/GALLON	VERT	VERTICAL
GALV	GALVANIZED	VFD	VARIABLE FREQUENCY DRIVE
GC	GENERAL CONTRACTOR	VOL	VOLUME
GPM	GALLONS PER MINUTE	W	WRAPPED DUCT
GRD	GRILLE/REGISTER/DIFFUSER	WB	WET BULB
GWB	GYPSPUM WALL BOARD	WC	WATER GAUGE
HD	HEAD	W/	WITH
HORIZ	HORIZONTAL	W/O	WITHOUT
HP	HORSEPOWER	W/SF	WATTS PER SQUARE FOOT
HR	HOUR	WSEC	WASHINGTON STATE ENERGY CODE
HSPF	HEATING SEASONAL PERFORMANCE FACTOR		
HT	HEIGHT		
HWTG	HIGH WALL TRANSFER GRILLE		
HWR	HOT WATER RETURN		
HWS	HOT WATER SUPPLY		
HX	HEAT EXCHANGER		
HZ	HERTZ		

## MECHANICAL LEGEND



## GENERAL NOTES

- ALL WORK SHALL COMPLY WITH THE 2018 SEATTLE BUILDING CODE, 2018 SEATTLE MECHANICAL CODE, 2018 SEATTLE PLUMBING CODE, 2018 SEATTLE ENERGY CODE, 2018 SEATTLE FUEL GAS CODE, AND OTHER APPLICABLE FEDERAL, STATE, OR LOCAL CODES AS ADOPTED AND ENFORCED BY THE LOCAL JURISDICTION. IN CASE THE PLANS SHOW MORE STRINGENT REQUIREMENTS, THE PLANS SHALL GOVERN THE DESIGN, YET NOTHING ON THE DESIGN DOCUMENTS SHALL BE INTERPRETED AS AUTHORITY TO VIOLATE CODE(S) OR REGULATION(S).
- SUBMISSION OF BID IN CONNECTION WITH THIS WORK SHALL IMPLY THAT THE BIDDER HAS EXAMINED THE JOB SITE UNDER WHICH THE CONTRACTOR WILL BE OBLIGATED TO OPERATE UNDER THIS CONTRACT. NO EXTRA CHARGE WILL BE ALLOWED FOR FAILURE OF ANY BIDDER TO EXAMINE THE SITE PRIOR TO BID.
- WHERE USED, THE TERM "PROVIDE" SHALL MEAN "FURNISH AND INSTALL".
- IN THE EVENT OF A CONFLICT OR INCONSISTENCY BETWEEN ITEMS INDICATED ON DRAWINGS AND SPECIFICATIONS WITH CODE REQUIREMENTS, THE MORE STRINGENT STANDARD SHALL PREVAIL.
- CARE SHALL BE EXERCISED TO MINIMIZE ANY INCONVENIENCE OR DISTURBANCE TO OTHER AREAS OF THE BUILDING WHICH ARE TO REMAIN IN OPERATION. ISOLATE WORK AREAS TO KEEP DUST AND DIRT WITHIN THE CONSTRUCTION AREA.
- NO PIPING, EQUIPMENT, ETC. SHALL BE REMOVED, DISCONNECTED OR SHUT DOWN WITHOUT PRIOR REVIEW WITH THE OWNER TO CONFIRM THAT AREAS TO REMAIN IN OPERATION WILL NOT BE AFFECTED. IF ANY AREAS NOT WITHIN THE SCOPE OF WORK ARE AFFECTED BY ANY SHUTDOWN, REMOVAL OR DISCONNECTION, SUFFICIENT ADVANCE NOTICE MUST BE GIVEN TO THE OWNER INDICATING WHICH AREAS WILL BE AFFECTED, WHEN THE PROPOSED SHUTDOWN WILL OCCUR, AND FOR HOW LONG A PERIOD OF TIME.
- THE ARRANGEMENT OF EQUIPMENT AND PIPING SHOWN ON THE DRAWINGS IS BASED UPON INFORMATION AVAILABLE TO THE ENGINEER AT THE TIME OF DESIGN AND IS NOT INTENDED TO SHOW EXACT DIMENSIONS. THIS CONTRACTOR SHALL VERIFY ALL DIMENSIONS AT THE SITE MAKING FIELD MEASUREMENTS AND SHOP DRAWINGS NECESSARY FOR FABRICATION OR ERECTION OF HVAC SYSTEMS. MAKE ALLOWANCE FOR BEAMS, PIPES AND OTHER OBSTRUCTIONS IN BUILDING CONSTRUCTION. CHECK DRAWINGS SHOWING WORK OF OTHER TRADES AND CONSULT WITH THE OWNER'S REPRESENTATIVE IN THE EVENT OF POTENTIAL INTERFERENCE. SHOP DRAWINGS SHALL BE MINIMUM 1/4"=1'-0" SCALE, INDICATING FITTINGS, SIZES, WELDS AND CONFIGURATIONS AND SUBMITTED TO ENGINEER FOR REVIEW.
- THIS CONTRACTOR SHALL COORDINATE HIS WORK WITH ALL OTHER TRADES PRIOR TO FABRICATION, PURCHASE AND/OR INSTALLATION OF ALL WORK.
- ALL EQUIPMENT SHALL BE INSTALLED IN STRICT COMPLIANCE WITH THE MANUFACTURER'S WRITTEN INSTRUCTIONS.
- THIS CONTRACTOR SHALL NOT BORE, NOTCH, CUT, OR PENETRATE INTO A STRUCTURAL MEMBER WITHOUT WRITTEN APPROVAL FROM A DESIGNATED STRUCTURAL ENGINEER AND THE OWNER.
- INSTALL MANUAL VOLUME DAMPERS WITHIN DUCT BRANCHES TO BALANCE AIRFLOW CFM. ON INSULATED DUCTS, MOUNT DAMPER REGULATOR ON 2" STAND-OFF BRACKET TO CLEAR INSULATION.
- COORDINATE ACCESS TO EQUIPMENT WITH WORK OF OTHER TRADES. PROVIDE DUCT ACCESS DOORS AND CEILING ACCESS DOORS TO ALLOW ACCESS FOR FILTER CHANGEOUT, CONTROLS ACCESS AND ACCESS TO SERVICE/REMOVE COMPONENTS INCLUDING, BUT NOT LIMITED TO, FANS, PULLEYS, SHEAVES, BELTS, ETC.
- PROJECT CLOSE OUT DOCUMENTATION AND TRAINING OF BUILDING OPERATIONS PERSONNEL IS REQUIRED FOR ALL MECHANICAL COMPONENTS, EQUIPMENT AND SYSTEMS PER SEC C103.6.

## SHEET INDEX

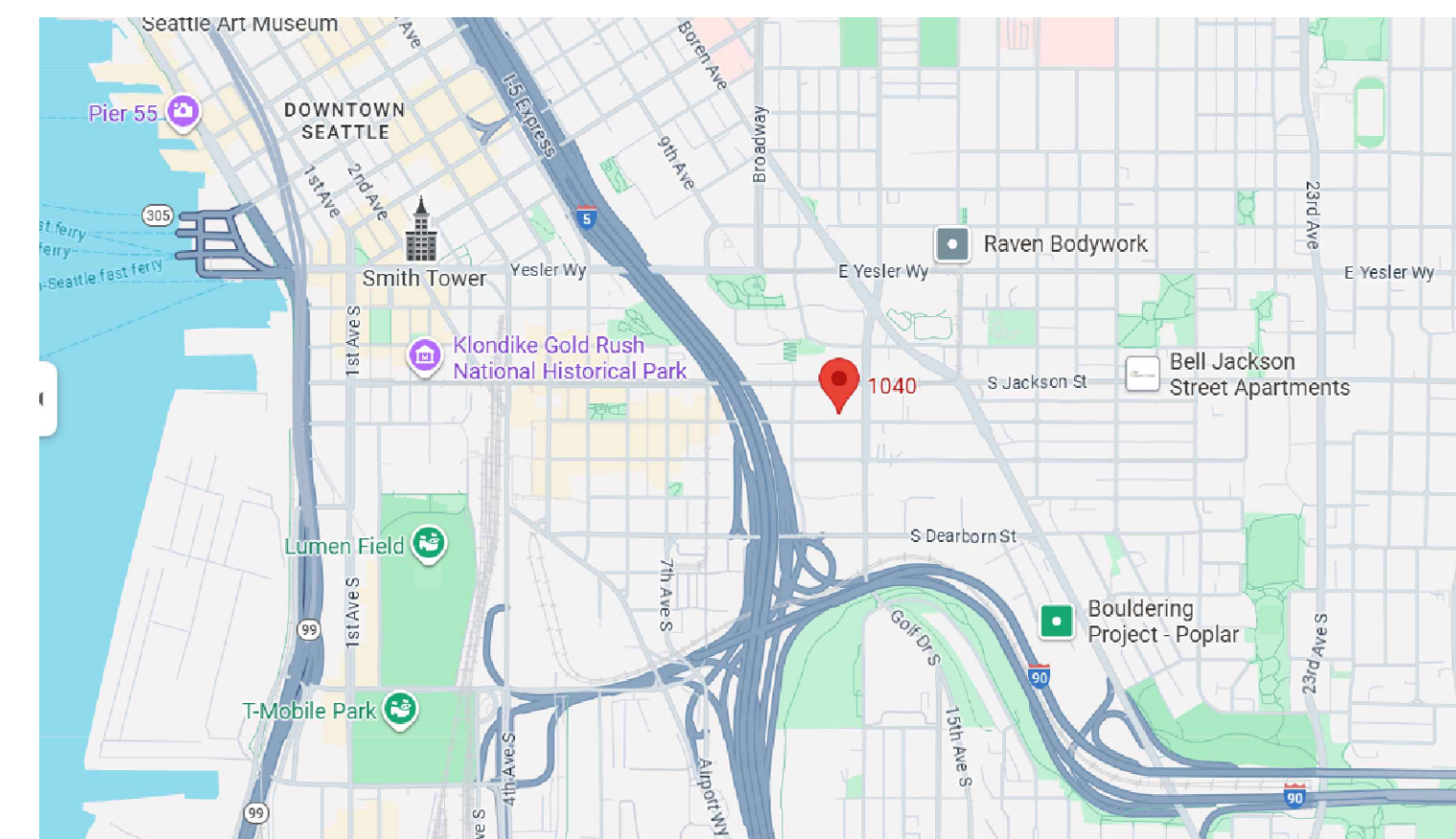
SHEET	DESCRIPTION	REV
M001	GENERAL NOTES, LEGEND, SHEET INDEX AND ABBREVIATIONS	
M002	SCHEDULES SHEET	
M003	SCHEDULES SHEET	
M004	SCHEDULES SHEET	
M200	BASEMENT LEVEL MECHANICAL HVAC & PIPING PLAN	
M201	LEVEL 1 MECHANICAL HVAC & PIPING PLAN	
M202	LEVEL 2 MECHANICAL HVAC & PIPING PLAN	
M203	LEVEL 3 MECHANICAL HVAC & PIPING PLAN	
M204	LEVEL 4 MECHANICAL HVAC & PIPING PLAN	
M205	LEVEL 5 MECHANICAL HVAC & PIPING PLAN	
M206	LEVEL 6 MECHANICAL HVAC & PIPING PLAN	
M207	LEVEL 7 MECHANICAL HVAC & PIPING PLAN	
M208	LEVEL 8 MECHANICAL HVAC & PIPING PLAN	
M209	ROOF MECHANICAL HVAC & PIPING PLAN	
M401	EAST ELEVATION MECHANICAL PLAN	
M402	NORTH & SOUTH ELEVATION MECHANICAL PLANS	
M403	WEST ELEVATION MECHANICAL PLAN	
M501	DETAILS SHEET	

## PARCEL NUMBER

817010-0070

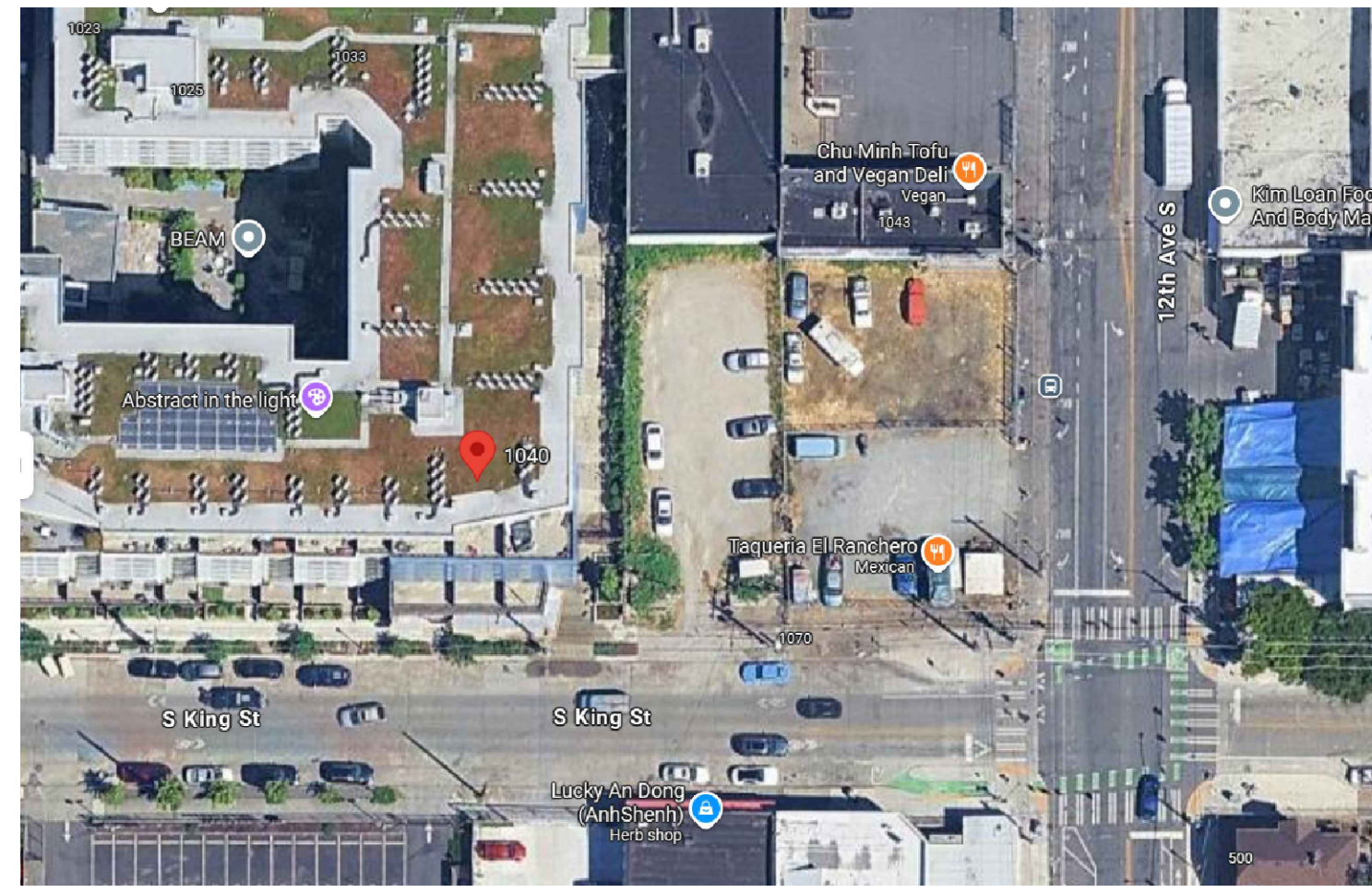
## LEGAL DESCRIPTION

SYNDICATE ADD



## VICINITY MAP

NO SCALE



## SITE MAP

NO SCALE

## MINIMUM PIPE INSULATION

FLUID DESIGN OPERATING TEMP °F	INSULATION CONDUCTIVITY		NOMINAL PIPE DIAMETER (INCH)				
	CONDUCTIVITY RANGE	MEAN TEMP RATING °F	<1	1 TO <1-1/2	1-1/2 TO <4	4 TO <8	≥8
<b>HEATING SYSTEMS* (STEAM, CONDENSATE, HYDRONIC HOT WATER, DOMESTIC HOT WATER, DOMESTIC HOT WATER RECIRCULATION)</b>							
>350	0.32-0.34	250	4.5	5	5	5	5
251-350	0.29-0.32	200	3	4	4.5	4.5	4.5
201-250	0.27-0.30	150	2.5	2.5	2.5	3	3
141-200	0.25-0.29	125	1.5	1.5	2	2	2
105-140	0.21-0.28	100	1	1	1.5	1.5	1.5
<b>DOMESTIC COLD WATER AND HORIZ RAIN LEADERS TO VERTICAL RAIN LEADER (TO PREVENT CONDENSATION ONLY)</b>							
NA	0.21-0.27	75	0.5	0.5	1	1	1
<b>COOLING SYSTEMS* (CHILLED WATER, BRINE AND REFRIGERANT, WATERSIDE ECONOMIZER SYSTEMS**)</b>							
40-60	0.21-0.27	75	0.5	0.5	1	1	1
<40	0.20-0.26	75	0.5	1	1	1	1.5

\* NOT REQUIRED FOR STRAINERS, CONTROL VALVES & BALANCING VALVES ASSOCIATED WITH PIPING 1" OR LESS IN DIA.  
 \*\* TYPICAL CONDENSER WATER PIPE IN NON-ECONOMIZER SYSTEMS IS NOT INSULATED  
 \*\*\* SEE R403 FOR RESIDENTIAL INSTALLATIONS



AQUA AIR ENGINEERING  
 12400 SE 38TH #50014  
 BELLEVUE, WA 98015  
 www.aquaairengineering.com  
 UBI: 605247933

### CONSULTANTS

1038 MIXED USE PROJECT  
 1040 SOUTH KING STREET  
 SEATTLE, WA 98104  
 MECHANICAL DRAWINGS

OWNER  
 668 INVESTMENT LLC  
 SOUTH KING STREET  
 SEATTLE, WA 98104

### MARK DATE DESCRIPTION

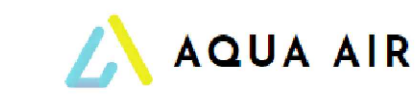
MARK	DATE	DESCRIPTION
	08/20/25	MECHANICAL PRELIMINARY DD SET
	09/01/25	MECHANICAL DD SET

## GENERAL NOTES, LEGEND, SHEET INDEX, AND ABBREVIATIONS

M001







AQUA AIR ENGINEERING  
12400 SE 38TH #50014  
BELLEVUE, WA 98015  
www.aquairengineering.com  
UBI: 605247933

CONSULTANTS

1038 MIXED USE PROJECT  
1040 SOUTH KING STREET  
SEATTLE, WA 98104  
MECHANICAL DRAWINGS

OWNER

668 INVESTMENT LLC  
SOUTH KING STREET  
SEATTLE, WA 98104

PACKAGED HEAT PUMP SCHEDULE

UNIT TAG	LOCATION	SERVES	BASIS OF DESIGN	SUPPLY CFM	OSA CFM	RETURN CFM	ESP IN WG	COOLING CAPACITY MBH				HEATING CAPACITY MBH			ELECTRICAL		SOUND POWER DBA	WEIGHT LBS	REMARKS	
								TOTAL	SENS	SEER2	EER2	TOTAL	HSPF2	COP	HP	MCA				V/PH
HP-R01	ROOF	CORRIDOR VENTILATION	TRANE 5WCC4024*1	725	0	725	0.50	24	14	13.4	11	21	6.7	-	-	-	208-230/1	66	464	1-16
HP-R02	ROOF	CORRIDOR VENTILATION	TRANE 5WCC4024*1	725	0	725	0.50	24	14	13.4	11	21	6.7	-	-	-	208-230/1	66	464	1-16

GENERAL ALL TRADES TO CONFIRM EQUIPMENT REQUIREMENTS (ELECTRICAL, WEIGHT, SIZE, ETC...) WITH APPROVED SUBMITTALS PRIOR TO INSTALLATION; FIELD COORDINATE FINAL LOCATION & INSTALL PER MANUFACTURERS REQUIREMENTS

- GENERAL
- UNIT CAPACITY RATED AT 85/67 OUTSIDE AIR DESIGN TEMPERATURES
  - ELECTRICAL CONTRACTOR TO PROVIDE SCRR PROTECTION DIRECTION FOR EQUIPMENT AS REQUIRED BY LATEST APPROVED VERSION OF THE NATIONAL ELECTRICAL CODE, PRIOR TO ORDER. MANUFACTURER TO PROVIDE SCRR LISTING (5 KAIC MINIMUM OR PER ELECTRICAL CONTRACTOR CALCULATION) INSIDE CONTROL PANEL AS REQUIRED BY NATIONAL ELECTRICAL CODE.
  - PROVIDE FULL ECONOMIZER (ENTHALPY) CYCLE, WITH BAROMETRIC RELIEF SYSTEM
  - ECONOMIZER SHALL BE CAPABLE OF PROVIDING PARTIAL COOLING IN ADDITION TO MECHANICAL COOLING AS REQUIRED TO MEET THE REMAINDER OF THE LOAD PER SECTION C403.3.1
  - MINIMUM UNIT EFFICIENCY TO MEET THE ENERGY CODE TABLE C403
  - PROVIDE WITH SUPPLEMENTAL ELECTRIC HEATER (TRANE BAYHTRG105 3.76 KW) IN UNIT FOR OPERATION DURING DEFROST MODE
  - OUTSIDE AIR INDICATES MINIMUM CFM PER ASHRAE. TAB WORK MUST MEET OR EXCEED INDICATED QUANTITY.
  - SMOKE DETECTOR PROVIDED BY E.C.
  - PROVIDE WITH MERV 13 FILTERS
  - PROVIDE WITH ADAPTER ROOF CURB MOUNTING PACKAGE
  - PROVIDE STAND-ALONE (DIGITAL 7-DAY THERMOSTAT / FULL DDC CONTROL)
  - PROVIDE FILTERS AT RETURN AIR OPENINGS OF NEW UNITS, UPSTREAM OF ANY HEAT EXCHANGER OR COILS PER SMC 605
  - PROVIDE SEISMIC BRACING PER ACSE 7, UNLESS: UNIT IS WALL MOUNTED OR <20 LBS OR IS RIGID MOUNTED INLINE WITH DUCT (NO FLEX) AND <75 LBS
  - HEAT PUMPS SHALL UTILIZE COMPRESSION HEATING AS FIRST STAGE OF HEAT AND AUXILIARY ELECTRIC HEAT SHALL NOT OPERATE ABOVE 40°F.
  - HEATING & COOLING FANS/PUMPS SHALL SHUT OFF WHEN THERE IS NO CALL FOR HEATING AND COOLING IN THE ZONE PER SEC 2018 C403.3.5.3, EXCEPT IF HEATING/COOLING FANS <0.12WCFM
  - M.C. TO CONFIRM POTENTIALLY INCREASED MCA REQUIREMENT WITH ELECTRICAL CONTRACTOR AND BUILDING POWER AVAILABILITY
  - HEAT PUMP UNIT TO USE REFRIGERANT R-454B

FAN SCHEDULE

UNIT TAG	LOCATION	SERVES	MANUFACTURE & MODEL	ARRANGEMENT TYPE	MOUNTING	CFM	ESP IN WG	FAN RPM	ELECTRICAL				DAMPER	SOUND dBA	WEIGHT LBS	NOTES
									BHP	HPW	MCA	V/PH				
EF-B1	LAUNDRY	DRYER EXH (BOOSTER FAN)	FANTECH DEDPV-705	INLINE	HUNG	120	0.34	2661	-	76 W	0.58	120/1	BDD	-	14	
EF-B2	LAUNDRY	DRYER EXH (BOOSTER FAN)	FANTECH DEDPV-705	INLINE	HUNG	120	0.34	2661	-	76 W	0.58	120/1	BDD	-	14	
EF-B3	LAUNDRY	DRYER EXH (BOOSTER FAN)	FANTECH DEDPV-705	INLINE	HUNG	120	0.34	2661	-	76 W	0.58	120/1	BDD	-	14	
EF-B4	LAUNDRY	DRYER EXH (BOOSTER FAN)	FANTECH DEDPV-705	INLINE	HUNG	120	0.34	2661	-	76 W	0.58	120/1	BDD	-	14	
EF-B5	LAUNDRY	DRYER EXH (BOOSTER FAN)	FANTECH DEDPV-705	INLINE	HUNG	120	0.34	2661	-	76 W	0.58	120/1	BDD	-	14	
EF-B6	BKE STORAGE	BKE STORAGE	GREENHECK CSP-A700-VG	INLINE	HUNG	525	0.3	980	0.1	76 W	5.1	120/1	MD	0.9 SONES	39	
EF-B7	RESTROOM	RESTROOM EXH	PANASONIC FV-05VKS2	CEILING	CEILING	50	0.1	795	-	5 W	0.2	120/1	BDD	0.5	12	
TF-B8	STORAGE	STORAGE VENTILATION	GREENHECK CSP-A700-VG	INLINE	HUNG	400	0.3	907	0.07	52 W	5.1	120	MD	0.6 SONES	39	
TF-B9	STORAGE	STORAGE VENTILATION	GREENHECK CSP-A700-VG	INLINE	HUNG	400	0.3	907	0.07	52 W	5.1	120	MD	0.6 SONES	39	
EF-11	TRASH ROOM	TRASH ROOM	GREENHECK SQ-90-VG	INLINE	HUNG	475	0.3	1481	0.06	1/6 HP	3.5	120/1	MD	64 LWA	34	
EF-12	MEN RR	RESTROOM EXH	PANASONIC FV-05VKS2	CEILING	CEILING	50	0.1	795	-	5 W	0.2	120/1	BDD	0.5	12	
EF-13	WOMEN RR	RESTROOM EXH	PANASONIC FV-05VKS2	CEILING	CEILING	50	0.1	795	-	5 W	0.2	120/1	BDD	0.5	12	
SPF-R01	ROOF	STAIR	GREENHECK QEI-12	VANE AX	SLEEPERS	3050	1.25	2618	1.31	1.5	13.8	208/1	MD	72 LWA	199	
SPF-R02	ROOF	STAIR	GREENHECK QEI-12	VANE AX	SLEEPERS	3050	1.25	2618	1.31	1.5	13.8	208/1	MD	72 LWA	199	
EPF-R03	ROOF	ELEVATOR	GREENHECK AX-72-190-0414	VANE AX	SLEEPERS	7200	1.26	1770	2.3	3	12	208/3	MD	91 LWA	264	
EF-R4	ROOF	TRASH CHUTE	GREENHECK CUE-100HP-VG	UPBLAST	CURB	450	1.2	1930	0.22	0.5	8.2	120/1	-	71 LWA	65	
EF-R5	ROOF	CORRIDOR SMOKE EXH	GREENHECK AX-36-160-0624	VANE AX	SLEEPERS	2700	2	3500	1.96	2	8.5	208/1	MD	90 LWA	96	
EF-R6	ROOF	CORRIDOR SMOKE EXH	GREENHECK AX-36-160-0618	VANE AX	SLEEPERS	2220	2	3500	1.47	1.5	7.5	208/1	MD	91 LWA	97	

GENERAL ALL TRADES TO CONFIRM EQUIPMENT REQUIREMENTS (ELECTRICAL, WEIGHT, SIZE, ETC...) WITH APPROVED SUBMITTALS PRIOR TO INSTALLATION; FIELD COORDINATE FINAL LOCATION & INSTALL PER MANUFACTURERS REQUIREMENTS

AIR COOLED CHILLER SCHEDULE

UNIT TAG	LOCATION	AREA SERVED	BASIS OF DESIGN	NOM TONS	CHILLED WATER			EER FULL / PART LOAD	ELECTRICAL			SOUND DBA	WEIGHT LBS	REMARKS	
					GPM	PD FT	EWI °F		LWT °F	MCA	MCOP				V/PH
CH-R1	ROOF	BLDG	TRANE CGAM-40	40	96	12	55	45		212	300	208/3		2,920	
CH-R2	ROOF	BLDG	TRANE CGAM-40	40	96	12	55	45		212	300	208/3		2,920	

GENERAL ALL TRADES TO CONFIRM EQUIPMENT REQUIREMENTS (ELECTRICAL, WEIGHT, SIZE, ETC...) WITH APPROVED SUBMITTALS PRIOR TO INSTALLATION; FIELD COORDINATE FINAL LOCATION & INSTALL PER MANUFACTURERS REQUIREMENTS. CHILLER SELECTION AND ELECTRICAL INFORMATION INCLUDES CIRCULATION PUMPS WITH VFDS

ELECTRIC HOT WATER BOILER

UNIT TAG	LOCATION	AREA SERVED	BASIS OF DESIGN	KW	CIRCUITS	EWT °F	LWT °F	GPM	ELECTRICAL		WEIGHT LBS	REMARKS
									FLA	V/PH		
B-R1	ROOF	HEATING WTR LOOP	PRECISION PCW1-090C-208	90	6	110	130	31	251	208/3	600	1,2,3,4,5
B-R2	ROOF	HEATING WTR LOOP	PRECISION PCW1-090C-208	90	6	110	130	31	251	208/3	600	1,2,3,4,5

- GENERAL ALL TRADES TO CONFIRM EQUIPMENT REQUIREMENTS (ELECTRICAL, WEIGHT, SIZE, ETC...) WITH APPROVED SUBMITTALS PRIOR TO INSTALLATION; FIELD COORDINATE FINAL LOCATION & INSTALL PER MANUFACTURERS REQUIREMENTS
- ELECTRICAL CONTRACTOR TO PROVIDE SCRR PROTECTION DIRECTION FOR EQUIPMENT AS REQUIRED BY LATEST APPROVED VERSION OF THE NATIONAL ELECTRICAL CODE, PRIOR TO ORDER. MANUFACTURER TO PROVIDE SCRR LISTING (5 KAIC MIN OR PER ELECTRICAL CONTRACTOR CALCULATION) INSIDE CONTROL PANEL AS REQUIRED BY NATIONAL ELECTRICAL CODE.
  - DISCONNECT AS REQUIRED BY ELECTRICAL CONTRACTOR
  - REMOTE WALL MOUNTED EMERGENCY SHUTOFF FOR GSD-1 COMPLIANCE PROVIDED BY MECHANICAL, INSTALLED BY ELECTRICAL
  - UL LABELED. PROVIDE WITH MANUAL PROBE LOW WATER CUT OUT, FLOW SWITCH, ON/OFF CONTROL VIA LOCAL/REMOTE SWITCH FOR NEW DDC CONTROL SYSTEM
  - PROVIDE WORKING PRESSURE RATING OF 300 PSI

ELECTRIC HEATER SCHEDULE

UNIT TAG	LOCATION	AREA SERVED	BASIS OF DESIGN	KW	CFM	STAGES	ELEC		WEIGHT LBS	REMARKS
							FLA	V/PH		
UH-101	LEVEL 1	TENANT SPACE	KB2012-1-T-B2	12.50	700	1	60.1	208/1	20	1
UH-102	LEVEL 1	TENANT SPACE	KB2012-1-T-B2	12.50	700	1	60.1	208/1	20	1
UH-103	LEVEL 1	RETAIL	KB2010-1-T-B2	9.98	600	1	48.0	208/1	45	1
UH-104	LEVEL 1	RETAIL	KB2010-1-T-B2	9.98	600	1	48.0	208/1	45	1

GENERAL ALL TRADES TO CONFIRM EQUIPMENT REQUIREMENTS (ELECTRICAL, WEIGHT, SIZE, ETC...) WITH APPROVED SUBMITTALS PRIOR TO INSTALLATION; FIELD COORDINATE FINAL LOCATION & INSTALL PER MANUFACTURERS REQUIREMENTS

- UNIT TO PROVIDE FREEZE PROTECTION

PUMP SCHEDULE

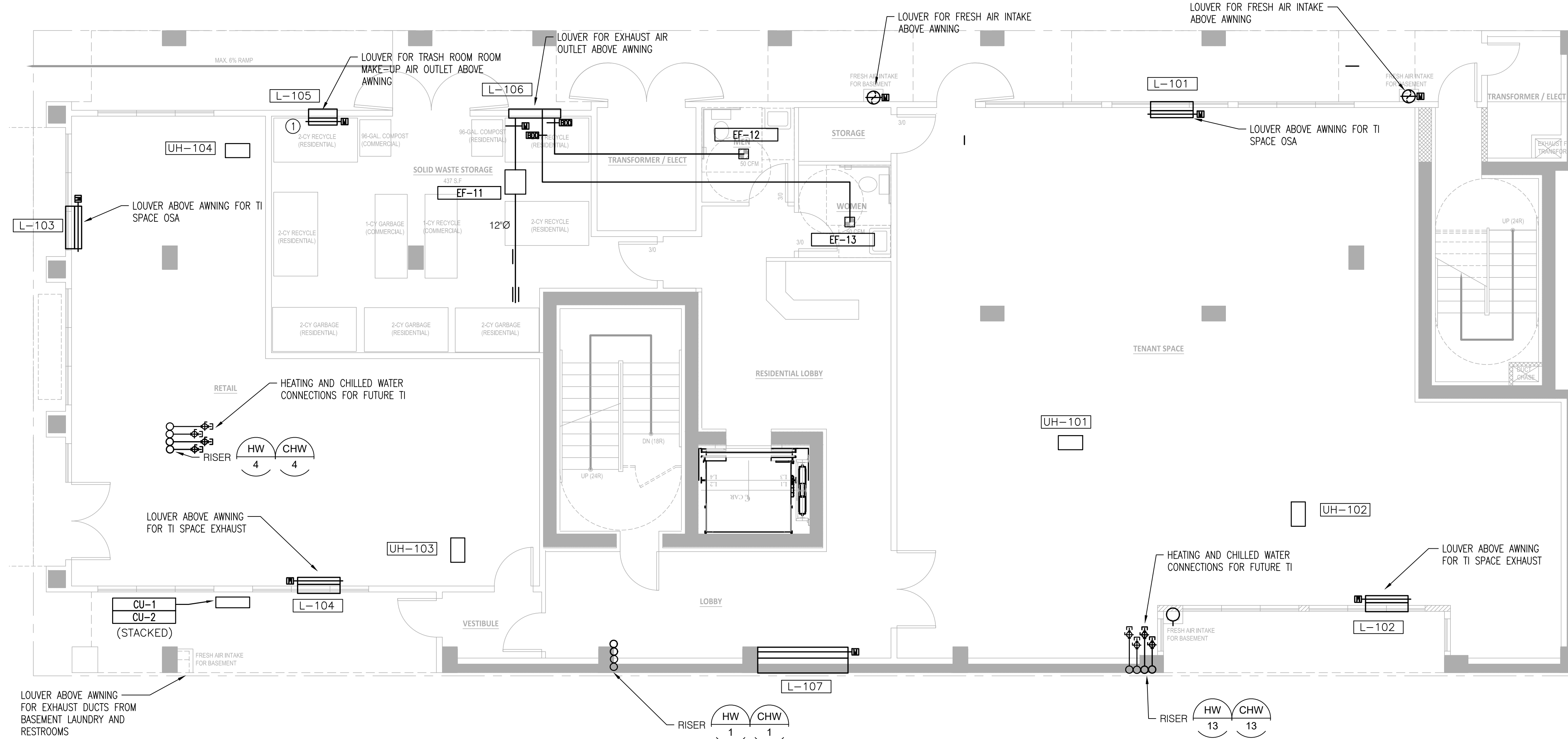
UNIT TAG	LOCATION	AREA SERVED	BASIS OF DESIGN	TYPE	CONFIG	GPM	INDOOR / OUTDOOR	OPER. HEAD (FT)	SHUT-OFF HEAD (FT)	CONSTR PRESS (PSI)	ELECTRICAL				WEIGHT LBS	REMARKS
											RPM	BHP	HP	V/PH		
P-R01H	MECH RM / ROOF	CLSD HEAT LOOP	B&G E-80SC-1.5X1.5X7C	INLINE	PARALLEL	31	INDOOR	20.0	30.0	300	1.092	0.26	3/4	208/1	200	
P-R02H	MECH RM / ROOF	CLSD HEAT LOOP	B&G E-80SC-1.5X1.5X7C	INLINE	PARALLEL	31	INDOOR	20.0	40.0	300	1.092	0.26	3/4	208/1	200	
P-R03C	MECH RM / ROOF	CLSD CHW LOOP	B&G E-80SC-2X2X9.5C	INLINE	PARALLEL	96	INDOOR	50.0	70.0	300	1.613	2.10	3	208/3	215	
P-R04C	MECH RM / ROOF	CLSD CHW LOOP	B&G E-80SC-2X2X9.5C	INLINE	PARALLEL	96	INDOOR	50.0	70.0	300	1.613	2.10	3	208/3	215	
P-801C	8TH FLOOR	SECONDARY LOOP	B&G ECOCIRC XL 55-45	INLINE	SINGLE	10	INDOOR	20.0	30.0	300	2.872		1/2	120/1	22	
P-801H	8TH FLOOR	SECONDARY LOOP	B&G ECOCIRC XL 55-45	INLINE	SINGLE	10	INDOOR	20.0	30.0	300	2.872		1/2	120/1	22	
P-802C	8TH FLOOR	SECONDARY LOOP	B&G ECOCIRC XL 55-45	INLINE	SINGLE	10	INDOOR	20.0	30.0	300	2.872		1/2	120/1	22	
P-802H	8TH FLOOR	SECONDARY LOOP	B&G ECOCIRC XL 55-45	INLINE	SINGLE	10	INDOOR	20.0	30.0	300	2.872		1/2	120/1	22	
P-803C	8TH FLOOR	SECONDARY LOOP	B&G ECOCIRC XL 55-45	INLINE	SINGLE	10	INDOOR	20.0	30.0	300	2.872		1/2	120/1	22	
P-803H	8TH FLOOR	SECONDARY LOOP	B&G ECOCIRC XL 55-45	INLINE	SINGLE	10	INDOOR	20.0	30.0	300	2.872		1/2	120/1	22	
P-804C	8TH FLOOR	SECONDARY LOOP	B&G ECOCIRC XL 55-45	INLINE	SINGLE	10	INDOOR	20.0	30.0	300	2.872		1/2	120/1	22	
P-804H	8TH FLOOR	SECONDARY LOOP	B&G ECOCIRC XL 55-45	INLINE	SINGLE	10	INDOOR	20.0	30.0	300	2.872		1/2	120/1	22	
P-805C	8TH FLOOR	SECONDARY LOOP	B&G ECOCIRC XL 55-45	INLINE	SINGLE	10	INDOOR	20.0	30.0	300	2.872		1/2	120/1	22	
P-805H	8TH FLOOR	SECONDARY LOOP	B&G ECOCIRC XL 55-45	INLINE	SINGLE	10	INDOOR	20.0	30.0	300	2.872		1/2	120/1	22	
P-806C	8TH FLOOR	SECONDARY LOOP	B&G ECOCIRC XL 55-45	INLINE	SINGLE	10	INDOOR	20.0	30.0	300	2.872		1/2	120/1	22	
P-806H	8TH FLOOR	SECONDARY LOOP	B&G ECOCIRC XL 55-45	INLINE	SINGLE	10	INDOOR	20.0	30.0	300	2.872		1/2	120/1	22	
P-807C	8TH FLOOR	SECONDARY LOOP	B&G ECOCIRC XL 55-45	INLINE	SINGLE	10	INDOOR	20.0	30.0	300	2.872		1/2	120/1	22	
P-807H	8TH FLOOR	SECONDARY LOOP	B&G ECOCIRC XL 55-45	INLINE	SINGLE	10	INDOOR	20.0	30.0	300	2.872		1/2	120/1	22	
P-808C	8TH FLOOR	SECONDARY LOOP	B&G ECOCIRC XL 55-45	INLINE	SINGLE	10	INDOOR	20.0	30.0	300	2.872		1/2	120/1	22	
P-808H	8TH FLOOR	SECONDARY LOOP	B&G ECOCIRC XL 55-45	INLINE	SINGLE	10	INDOOR	20.0	30.0	300	2.872		1/2	120/1	22	
P-809C	8TH FLOOR	SECONDARY LOOP	B&G ECOCIRC XL 55-45	INLINE	SINGLE	10	INDOOR	20.0	30.0	300	2.872		1/2	120/1	22	
P-809H	8TH FLOOR	SECONDARY LOOP	B&G ECOCIRC XL 55-45	INLINE	SINGLE	10	INDOOR	20.0	30.0	300	2.872		1/2	120/1	22	
P-810C	8TH FLOOR	SECONDARY LOOP	B&G ECOCIRC XL 55-45	INLINE	SINGLE	10	INDOOR	20.0	30.0	300	2.872		1/2	120/1	22	
P-810H	8TH FLOOR	SECONDARY LOOP	B&G ECOCIRC XL 55-45	INLINE	SINGLE	10	INDOOR	20.0	30.0	300	2.872		1/2	120/1	22	
P-811C	8TH FLOOR	SECONDARY LOOP	B&G ECOCIRC XL 55-45	INLINE	SINGLE	10	INDOOR	20.0	30.0	300	2.872		1/2	120/1	22	
P-811H	8TH FLOOR	SECONDARY LOOP	B&G ECOCIRC XL 55-45	INLINE	SINGLE	10	INDOOR	20.0	30.0	300	2.872		1/2	120/1	22	
P-812C	8TH FLOOR	SECONDARY LOOP	B&G ECOCIRC XL 55-45	INLINE	SINGLE	10	INDOOR	20.0	30.0	300	2.872		1/2	120/		



CONSULTANTS

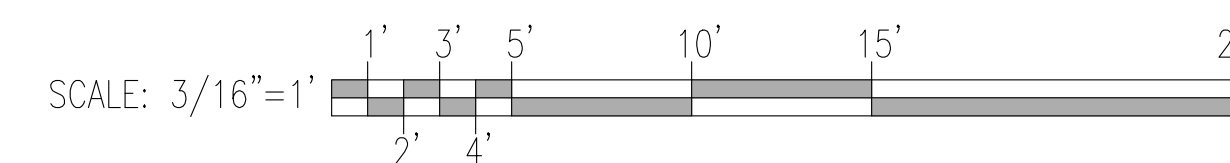
1038 MIXED USE PROJECT  
 1040 SOUTH KING STREET  
 SEATTLE, WA 98104  
 MECHANICAL DRAWINGS

OWNER  
 668 INVESTMENT LLC  
 SOUTH KING STREET  
 SEATTLE, WA 98104



① CONSTRUCTION PLAN NOTES:  
 MAKE UP AIR DUCT TO BE FROM LOUVER THROUGH WINDOW. WINDOW TO BE REMOVED BY G.C. MOTORIZED DAMPER TO OPERATE VIA STATIC PRESSURE IN ROOM.

① LEVEL 1 MECHANICAL HVAC & PIPING PLAN  
 3/16" = 1'-0"



08/20/25	MECHANICAL PRELIMINARY DD SET
09/01/25	MECHANICAL DD SET

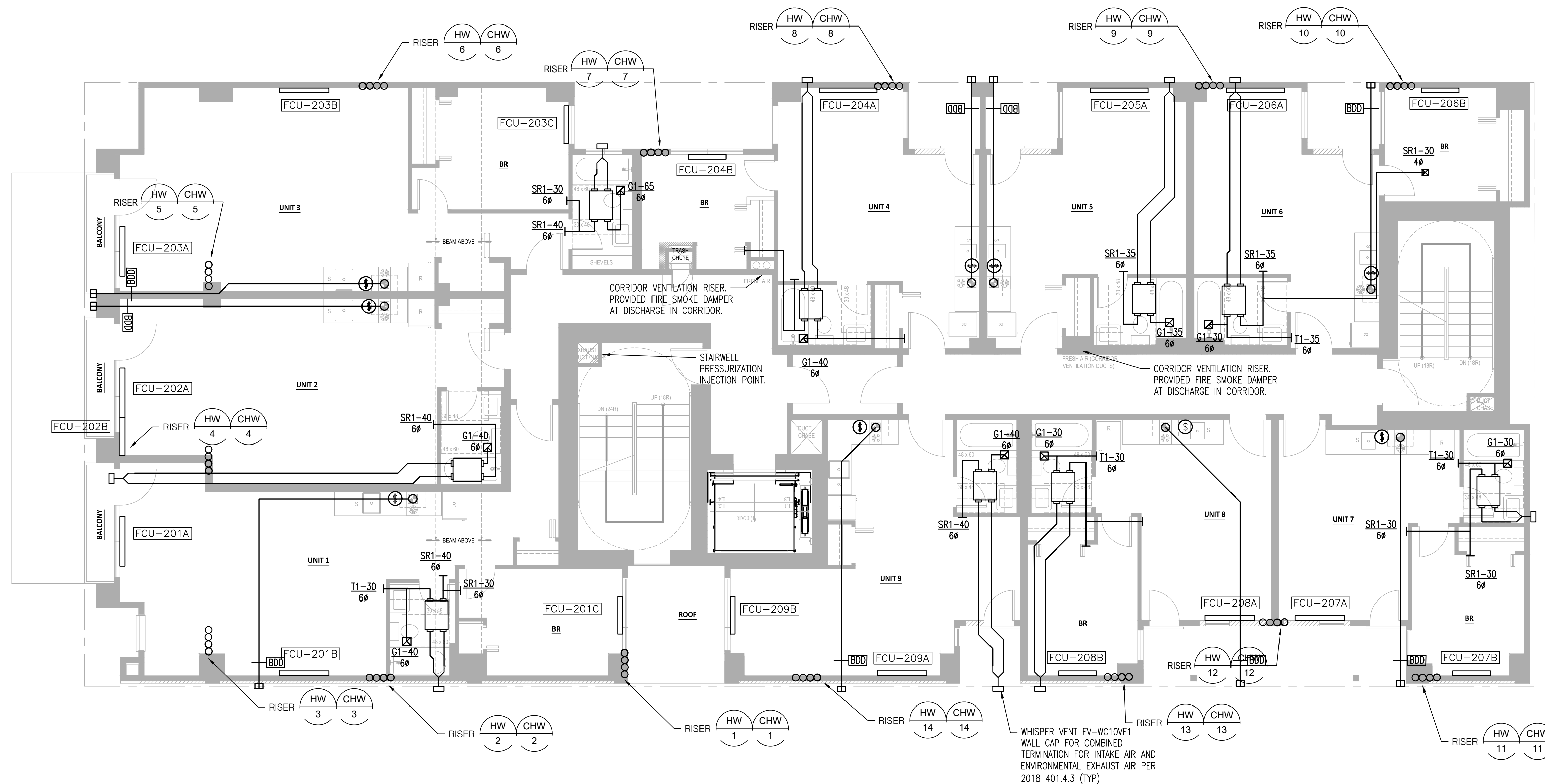
MARK	DATE	DESCRIPTION
PROJECT NO:	2025-016	
CAD DWG FILE:		
DRAWN BY:	DWN	
CHK'D BY:	DWN	
COPYRIGHT:		

SHEET TITLE  
**LEVEL 1 MECHANICAL HVAC & PIPING PLAN**

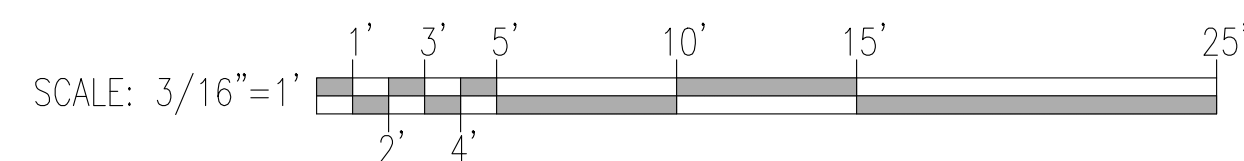
CONSULTANTS

1038 MIXED USE PROJECT  
 1040 SOUTH KING STREET  
 SEATTLE, WA 98104  
 MECHANICAL DRAWINGS

OWNER  
 668 INVESTMENT LLC  
 SOUTH KING STREET  
 SEATTLE, WA 98104



1 LEVEL 2 MECHANICAL HVAC & PIPING PLAN  
 3/16" = 1'-0"



08/20/25	MECHANICAL PRELIMINARY DD SET
09/01/25	MECHANICAL DD SET

MARK	DATE	DESCRIPTION
PROJECT NO:	2025-016	
CAD DWG FILE:		
DRAWN BY:	DWN	
CHK'D BY:	DWN	
COPYRIGHT:		

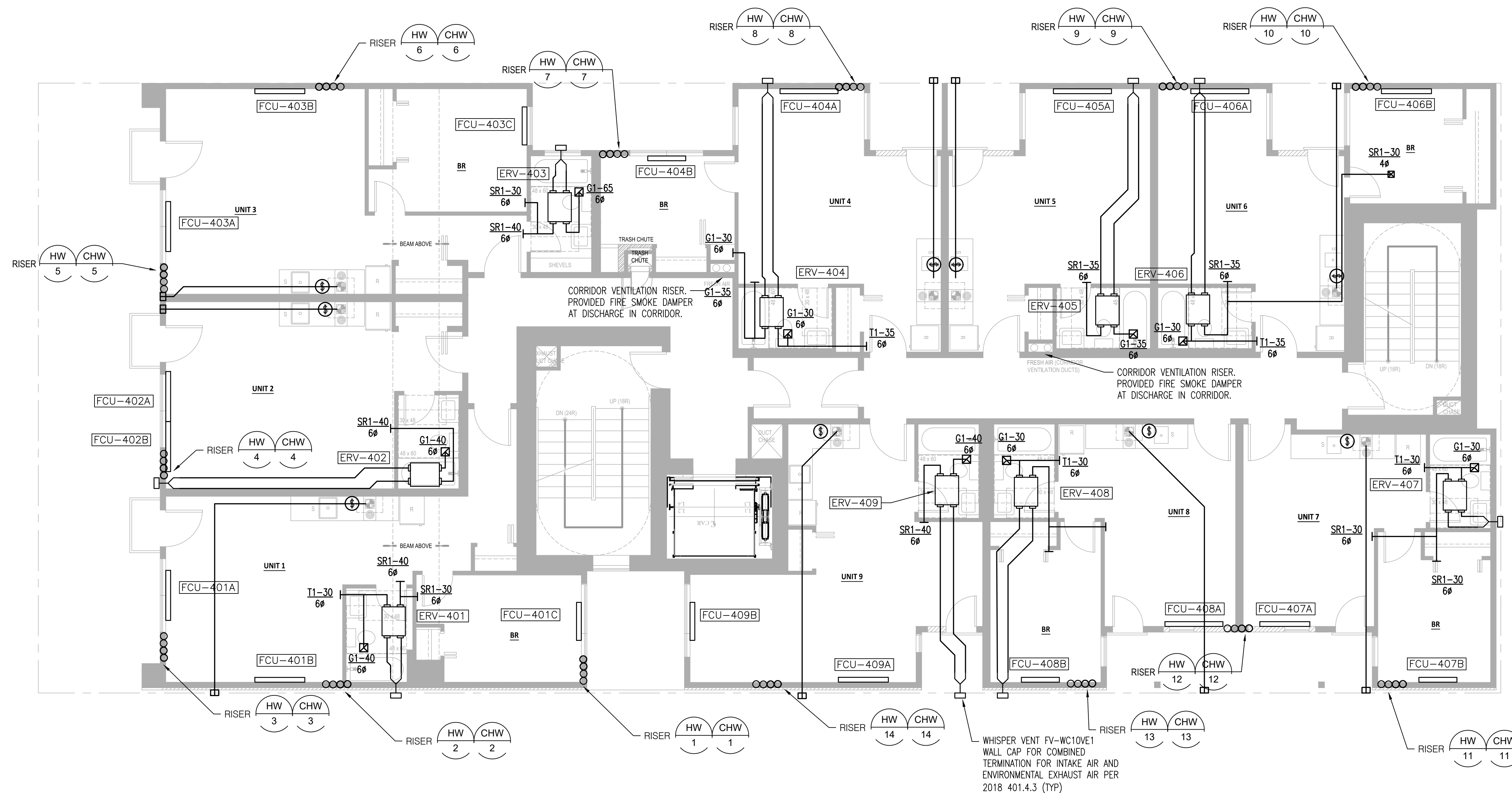
SHEET TITLE  
**LEVEL 2 MECHANICAL HVAC  
 & PIPING PLAN**



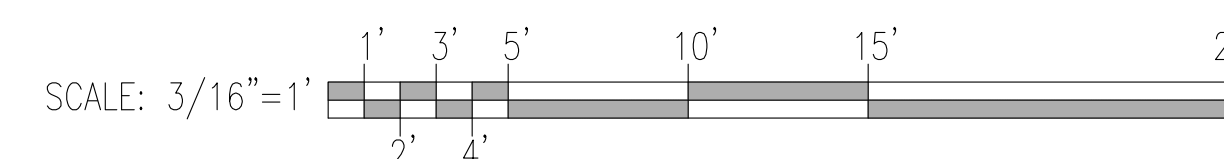
CONSULTANTS

1038 MIXED USE PROJECT  
 1040 SOUTH KING STREET  
 SEATTLE, WA 98104  
 MECHANICAL DRAWINGS

OWNER  
 668 INVESTMENT LLC  
 SOUTH KING STREET  
 SEATTLE, WA 98104



1 LEVEL 4 MECHANICAL HVAC & PIPING PLAN  
 3/16" = 1'-0"



08/20/25	MECHANICAL PRELIMINARY DD SET
09/01/25	MECHANICAL DD SET

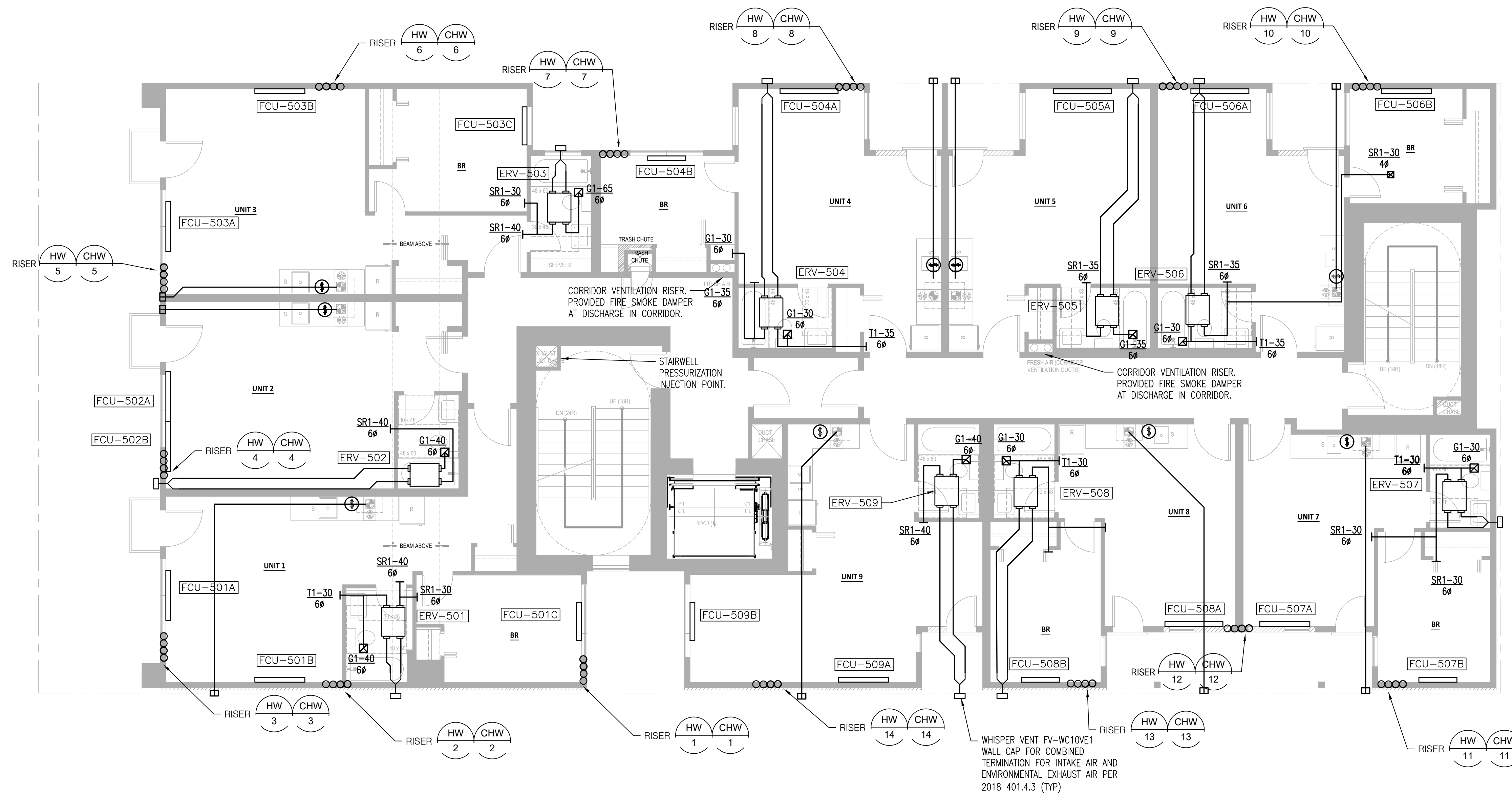
MARK	DATE	DESCRIPTION
PROJECT NO:	2025-016	
CAD DWG FILE:		
DRAWN BY:	DWN	
CHK'D BY:	DWN	
COPYRIGHT:		

SHEET TITLE  
**LEVEL 4 MECHANICAL HVAC  
 & PIPING PLAN**

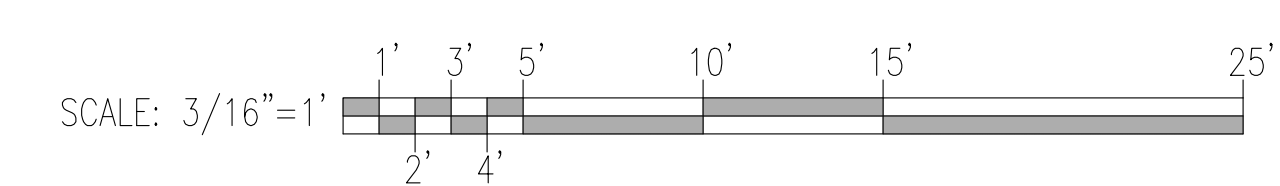
CONSULTANTS

1038 MIXED USE PROJECT  
 1040 SOUTH KING STREET  
 SEATTLE, WA 98104  
 MECHANICAL DRAWINGS

OWNER  
 668 INVESTMENT LLC  
 SOUTH KING STREET  
 SEATTLE, WA 98104



1 LEVEL 5 MECHANICAL HVAC & PIPING PLAN  
 3/16" = 1'-0"



08/20/25	MECHANICAL PRELIMINARY DD SET
09/01/25	MECHANICAL DD SET

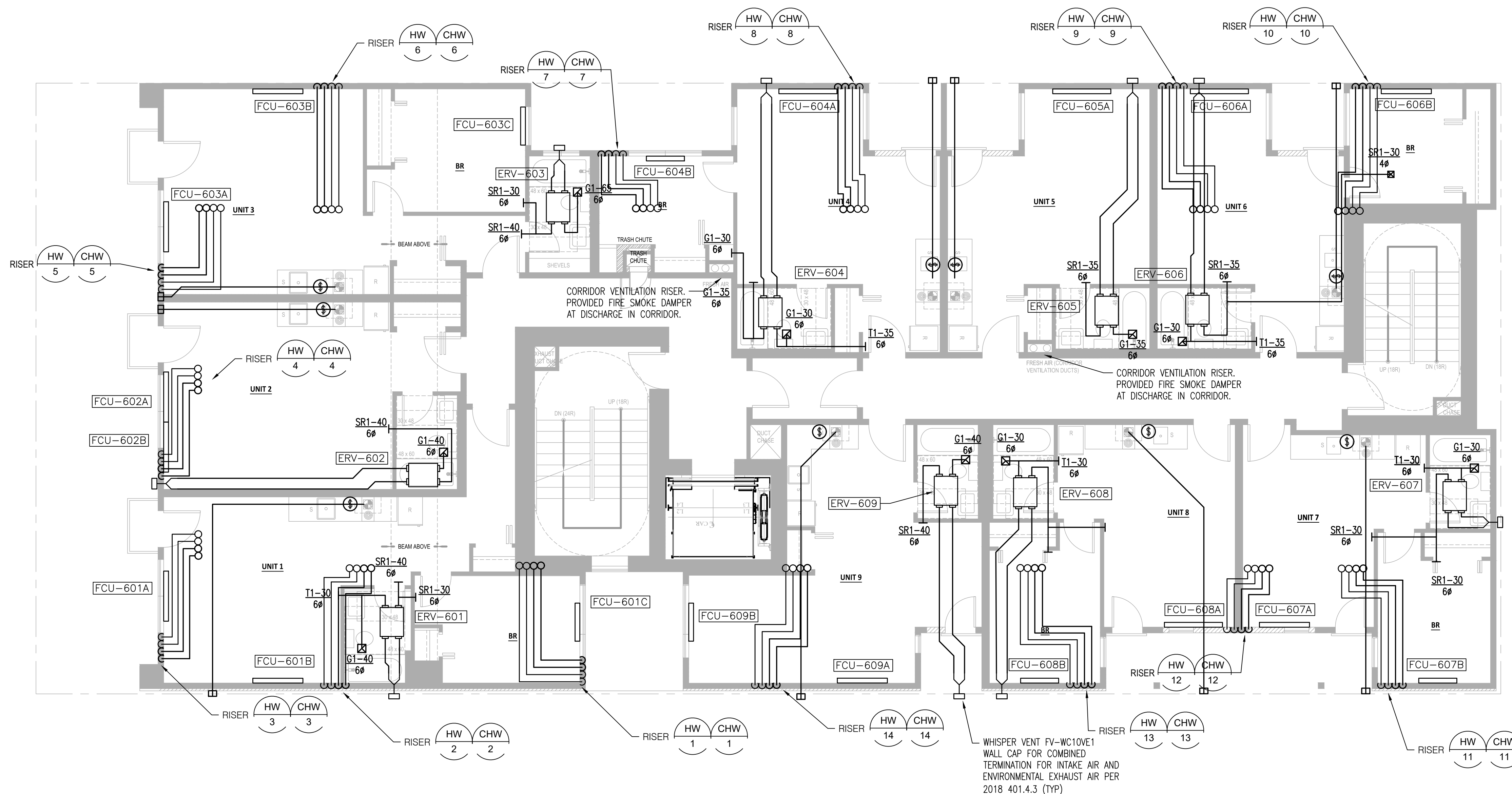
MARK	DATE	DESCRIPTION
PROJECT NO:	2025-016	
CAD DWG FILE:		
DRAWN BY:	DWN	
CHK'D BY:	DWN	
COPYRIGHT:		

SHEET TITLE  
**LEVEL 5 MECHANICAL HVAC  
 & PIPING PLAN**

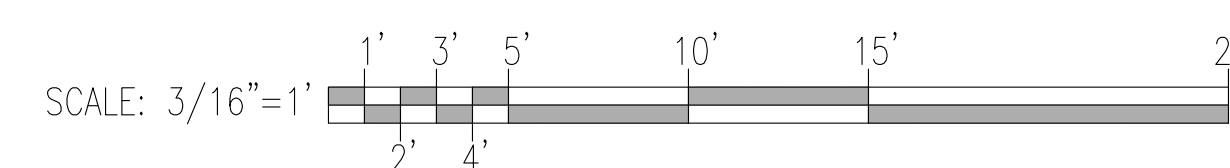
CONSULTANTS

1038 MIXED USE PROJECT  
 1040 SOUTH KING STREET  
 SEATTLE, WA 98104  
 MECHANICAL DRAWINGS

OWNER  
 668 INVESTMENT LLC  
 SOUTH KING STREET  
 SEATTLE, WA 98104



1 LEVEL 6 MECHANICAL HVAC & PIPING PLAN  
 3/16" = 1'-0"



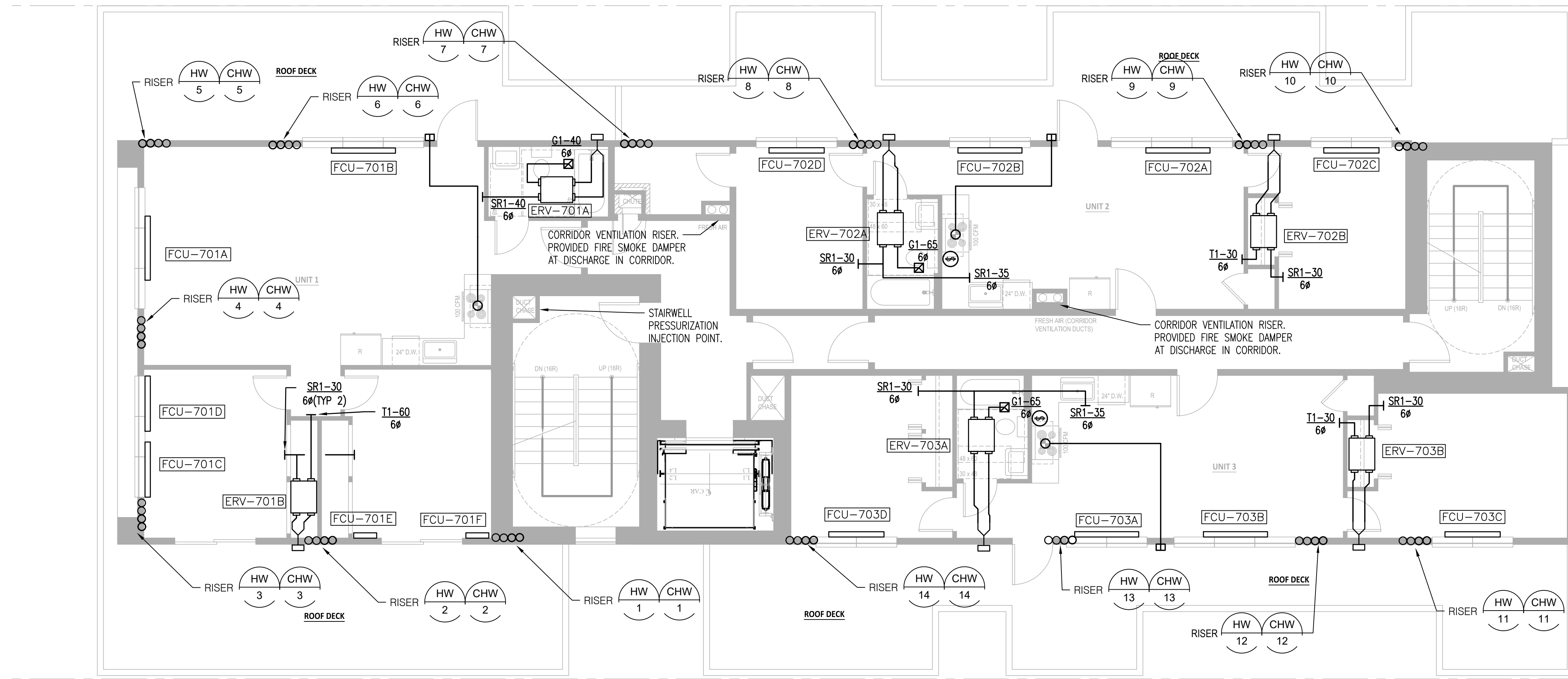
MARK	DATE	DESCRIPTION
PROJECT NO:	2025-016	
CAD DWG FILE:		
DRAWN BY:	DWN	
CHK'D BY:	DWN	
COPYRIGHT:		

SHEET TITLE  
**LEVEL 6 MECHANICAL HVAC  
 & PIPING PLAN**

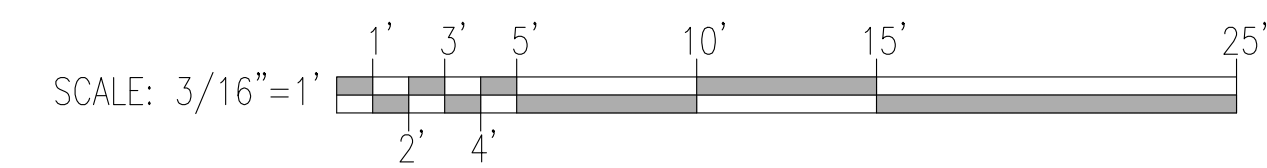
CONSULTANTS

1038 MIXED USE PROJECT  
 1040 SOUTH KING STREET  
 SEATTLE, WA 98104  
 MECHANICAL DRAWINGS

OWNER  
 668 INVESTMENT LLC  
 SOUTH KING STREET  
 SEATTLE, WA 98104



1 LEVEL 7 MECHANICAL HVAC & PIPING PLAN  
 3/16" = 1'-0"



08/20/25	MECHANICAL PRELIMINARY DD SET
09/01/25	MECHANICAL DD SET

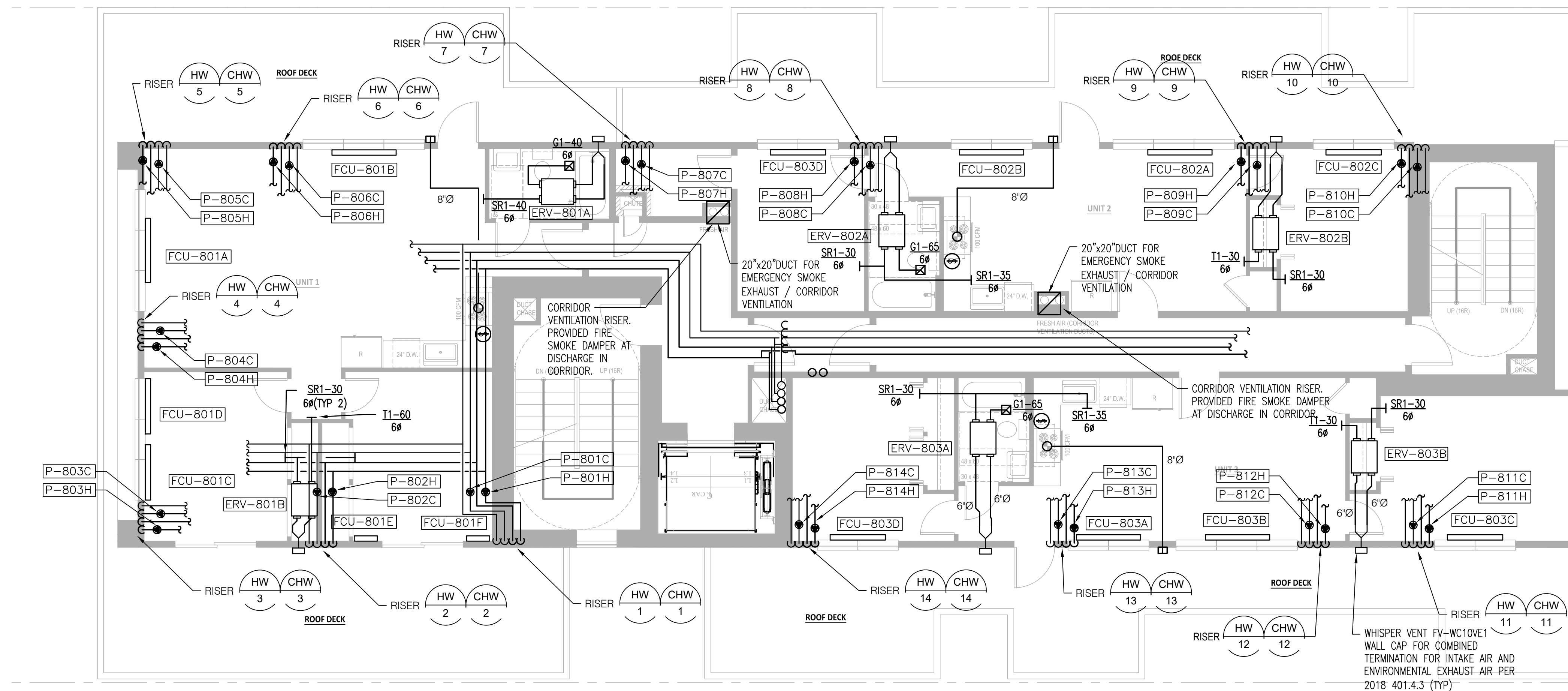
MARK	DATE	DESCRIPTION
PROJECT NO:	2025-016	
CAD DWG FILE:		
DRAWN BY:	DWN	
CHK'D BY:	DWN	
COPYRIGHT:		

SHEET TITLE  
**LEVEL 7 MECHANICAL HVAC  
 & PIPING PLAN**

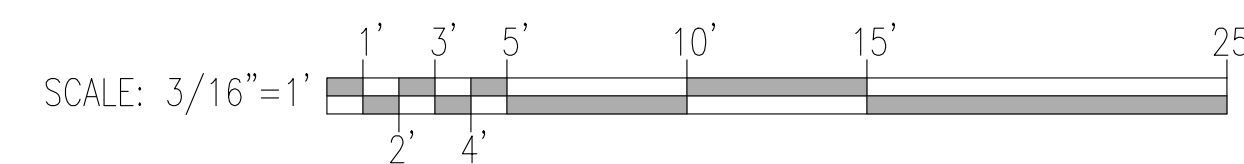
CONSULTANTS

1038 MIXED USE PROJECT  
 1040 SOUTH KING STREET  
 SEATTLE, WA 98104  
 MECHANICAL DRAWINGS

OWNER  
 668 INVESTMENT LLC  
 SOUTH KING STREET  
 SEATTLE, WA 98104



**1** LEVEL 8 MECHANICAL HVAC & PIPING PLAN  
 3/16" = 1'-0"



08/20/25	MECHANICAL PRELIMINARY DD SET
09/01/25	MECHANICAL DD SET

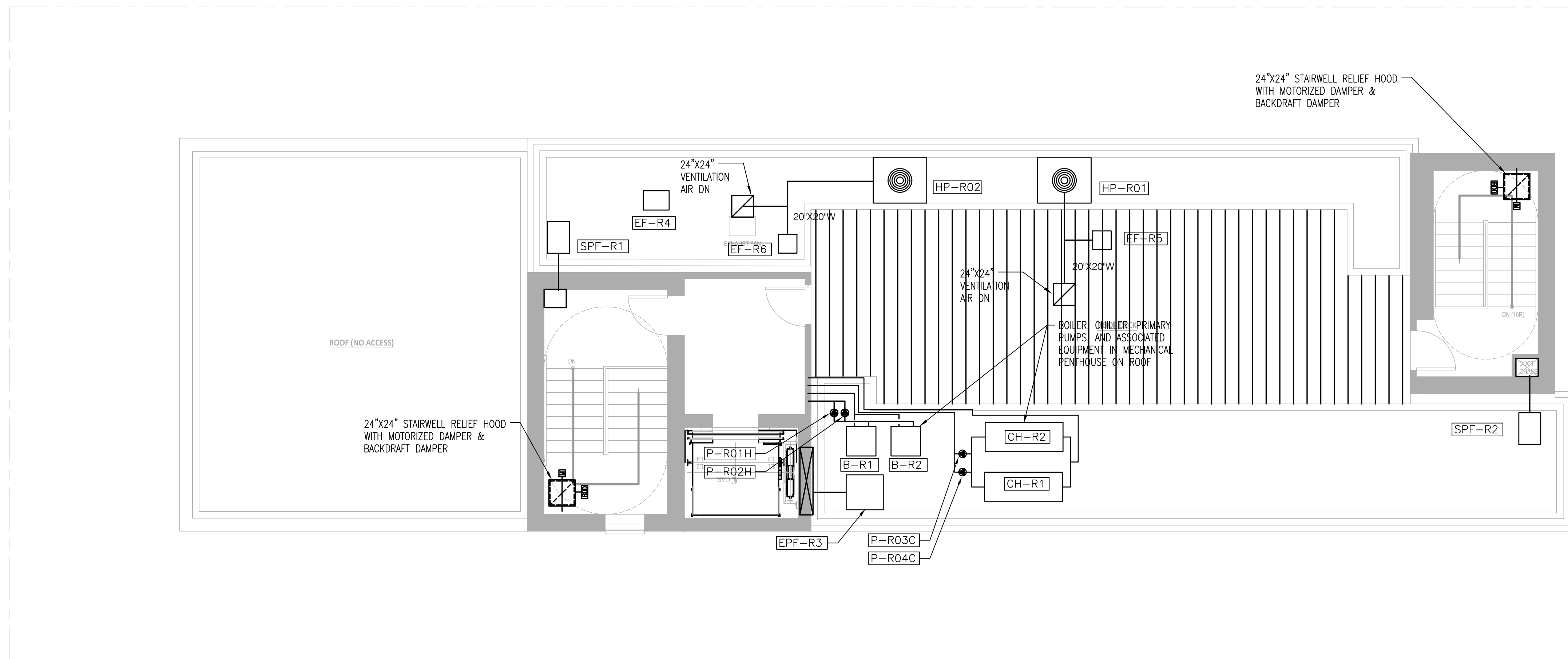
MARK	DATE	DESCRIPTION
PROJECT NO:	2025-018	
CAD DWG FILE:		
DRAWN BY:	DWN	
CHK'D BY:	DWN	
COPYRIGHT:		

SHEET TITLE  
**LEVEL 8 MECHANICAL HVAC  
 & PIPING PLAN**

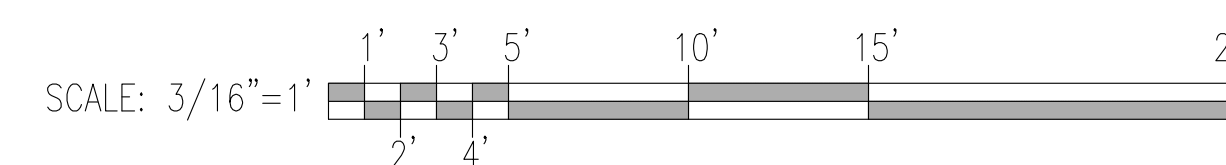
CONSULTANTS

1038 MIXED USE PROJECT  
 1040 SOUTH KING STREET  
 SEATTLE, WA 98104  
 MECHANICAL DRAWINGS

OWNER  
 668 INVESTMENT LLC  
 SOUTH KING STREET  
 SEATTLE, WA 98104



1 ROOF MECHANICAL HVAC & PIPING PLAN  
 3/16" = 1'-0"



08/20/25	MECHANICAL PRELIMINARY DD SET
09/01/25	MECHANICAL DD SET

MARK	DATE	DESCRIPTION
PROJECT NO:	2025-016	
CAD DWG FILE:		
DRAWN BY:	DWN	
CHK'D BY:	DWN	
COPYRIGHT:		

SHEET TITLE  
**ROOF MECHANICAL HVAC & PIPING PLAN**

CONSULTANTS

1038 MIXED USE PROJECT  
 1040 SOUTH KING STREET  
 SEATTLE, WA 98104  
 MECHANICAL DRAWINGS

OWNER  
 668 INVESTMENT LLC  
 SOUTH KING STREET  
 SEATTLE, WA 98104

08/20/25	MECHANICAL PRELIMINARY DD SET
09/01/25	MECHANICAL DD SET

MARK	DATE	DESCRIPTION
PROJECT NO:	2025-016	
CAD DWG FILE:	M401.DWG	
DRAWN BY:	DWN	
CHK'D BY:	DWN	
COPYRIGHT:		

SHEET TITLE  
**EAST ELEVATION  
 MECHANICAL PLAN**



1 EAST ELEVATION MECHANICAL PLAN  
 3/16" = 1'-0"

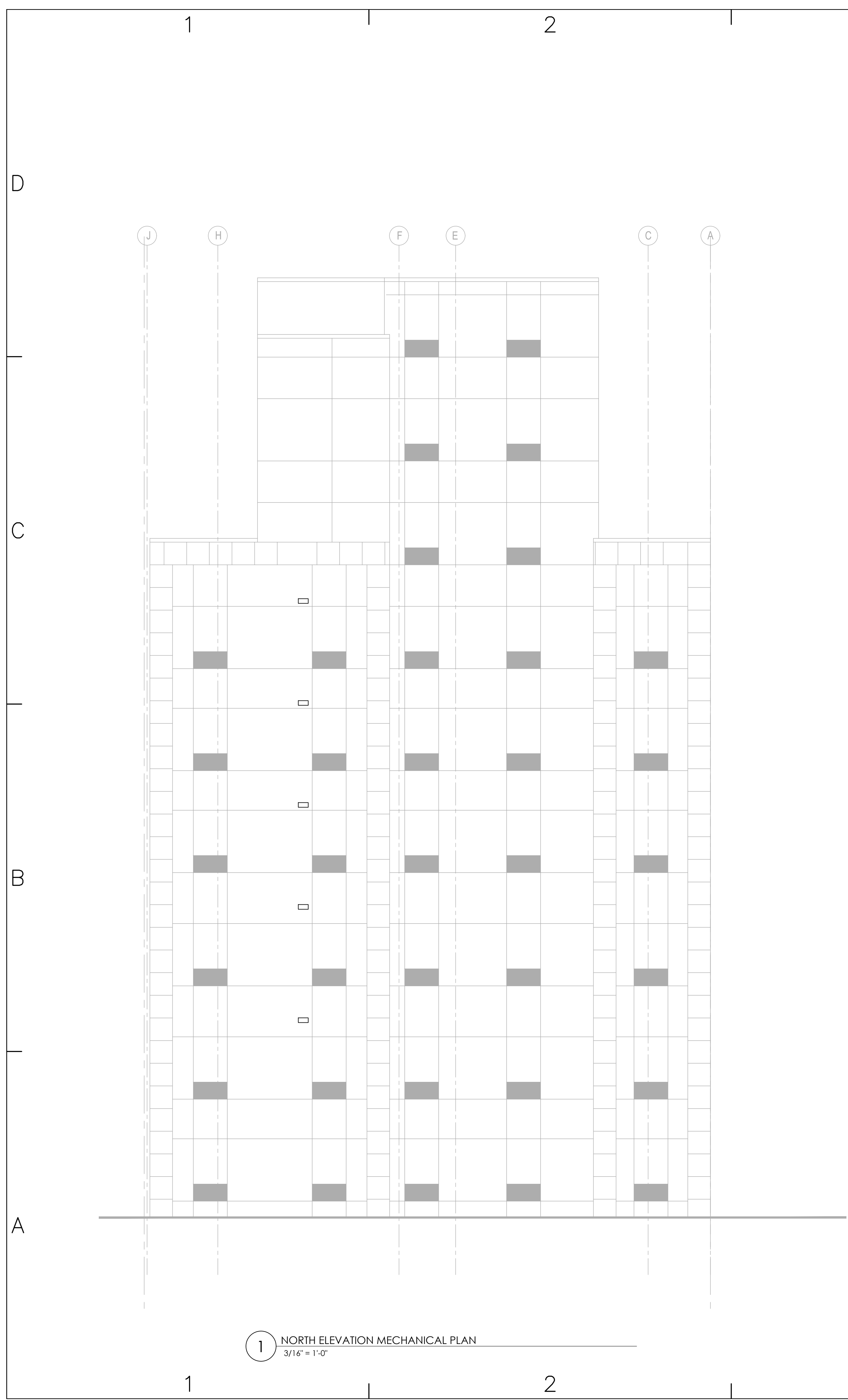
CONSULTANTS

1038 MIXED USE PROJECT  
 1040 SOUTH KING STREET  
 SEATTLE, WA 98104  
 MECHANICAL DRAWINGS

OWNER  
 668 INVESTMENT LLC  
 SOUTH KING STREET  
 SEATTLE, WA 98104

08/20/25	MECHANICAL PRELIMINARY DD SET	
09/01/25	MECHANICAL DD SET	
MARK	DATE	DESCRIPTION
PROJECT NO:	2025-016	
CAD DWG FILE:	M401.DWG	
DRAWN BY:	DWN	
CHK'D BY:	DWN	
COPYRIGHT:		

SHEET TITLE  
**NORTH & SOUTH ELEVATION  
 MECHANICAL PLANS**



CONSULTANTS

1038 MIXED USE PROJECT  
 1040 SOUTH KING STREET  
 SEATTLE, WA 98104  
 MECHANICAL DRAWINGS

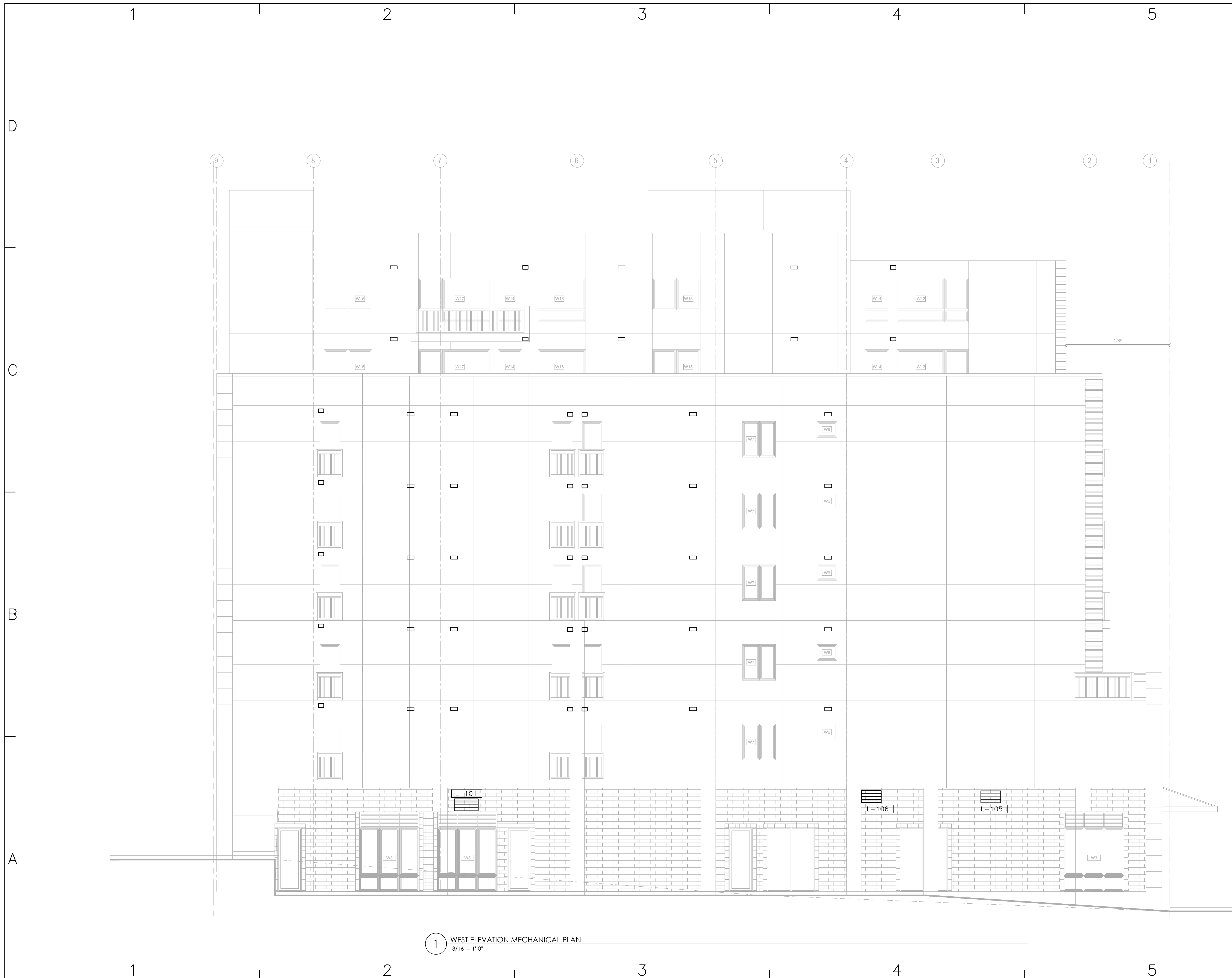
OWNER  
 668 INVESTMENT LLC  
 SOUTH KING STREET  
 SEATTLE, WA 98104

08/20/25	MECHANICAL PRELIMINARY DD SET
09/01/25	MECHANICAL DD SET

MARK	DATE	DESCRIPTION
PROJECT NO:	2025-016	
CAD DWG FILE:	M401.DWG	
DRAWN BY:	DWN	
CHK'D BY:	DWN	
COPYRIGHT:		

SHEET TITLE  
**WEST ELEVATION  
 MECHANICAL PLAN**

**M403**



**1 WEST ELEVATION MECHANICAL PLAN**  
 3/16" = 1'-0"

